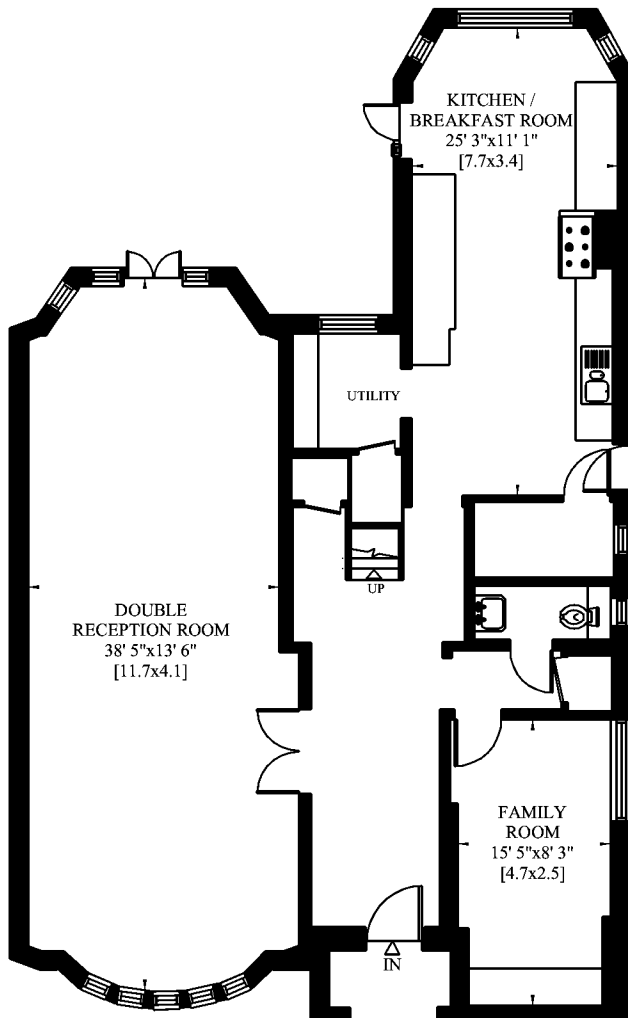


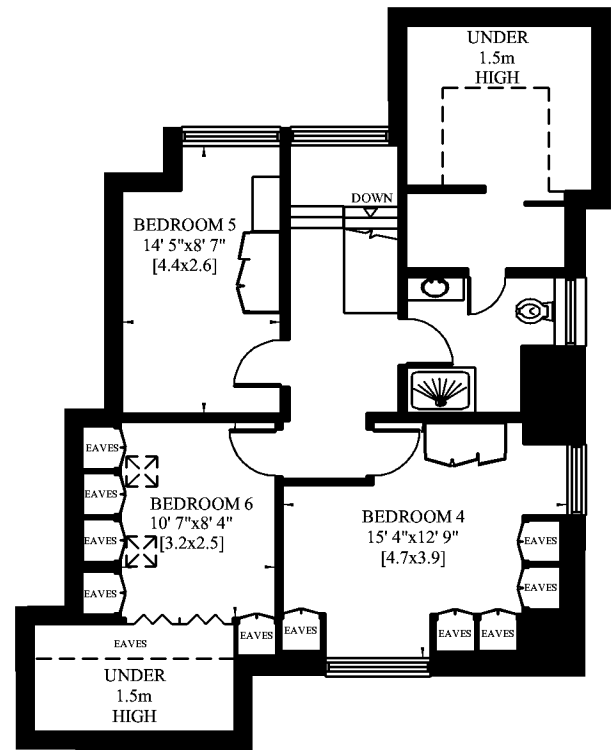
KINGSLEY WAY LONDON N2

Gross Internal Area: 277 Sq. metres
Excluding Eaves Storage 2983 Sq. feet
and Under 1.5m High

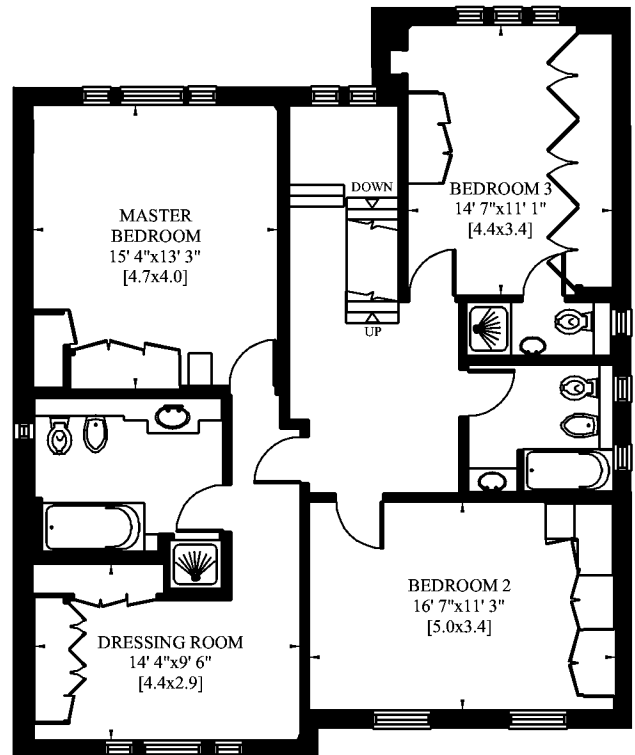
Total Gross Internal Area: 293 Sq. metres
Including Eaves Storage 3152 Sq. feet
and Under 1.5m High



GROUND FLOOR



SECOND FLOOR



FIRST FLOOR