

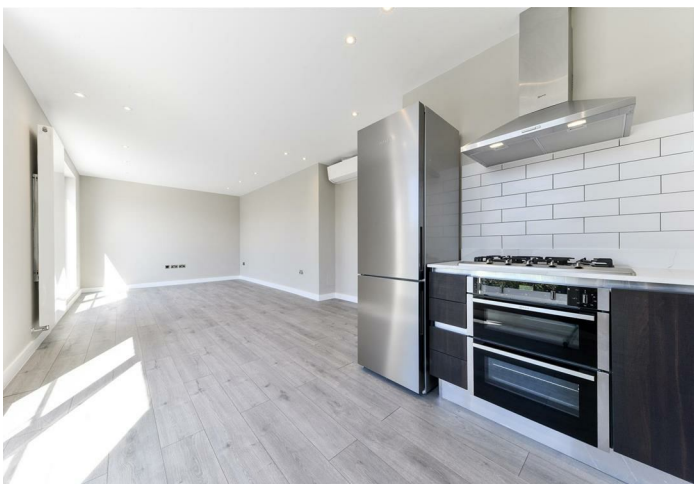


glentree

RENTALS

020 8209 1144

www.glentree.com



3, The Ridgeway, NW11

A stunning brand new first floor apartment available to rent in Golders Green.

This high quality, new build apartment offers nearly 700 sq ft of living space. The living room has 2 large windows allowing for maximum natural light. The apartment offers 2 double bedrooms, 2 bathrooms (one en suite bathroom)

Further benefits include air conditioning throughout, off street parking for 1 car (with electric car charging point) and lift in the building

Communal garden for tenants

Available now.

Long let

Barnet Council Band D

EPC Rating C

£744 Per Week

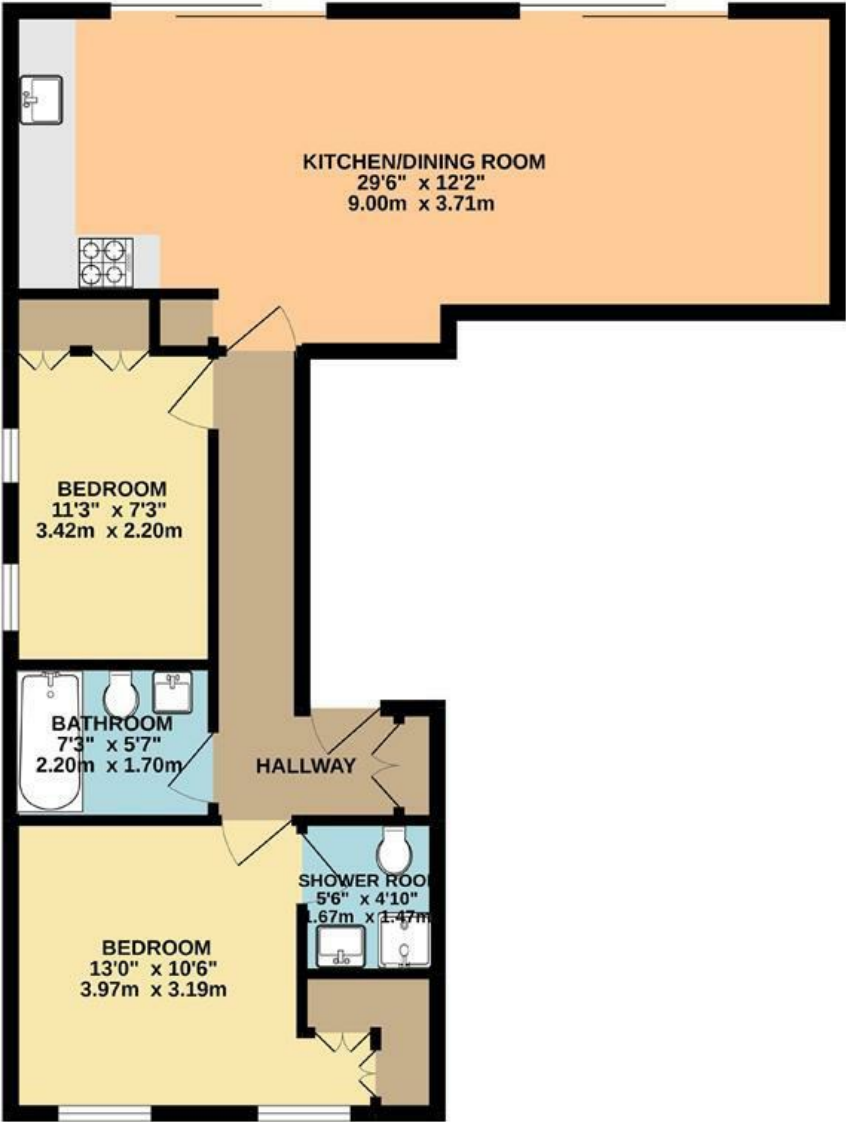


RENTALS 020 8209 1144
SALES 020 8458 7311
FAX 020 8209 0307

E rentals@glentree.com
E sales@glentree.com
W www.glentree.com

Glentree Estates Ltd
698 Finchley Road
London NW11 7NE

FLAT 3
693 sq.ft. (64.4 sq.m.) approx.



TOTAL FLOOR AREA : 693 sq.ft. (64.4 sq.m.) approx.
Whilst every attempt has been made to ensure the accuracy of the floorplan contained here, measurements of doors, windows, rooms and any other items are approximate and no responsibility is taken for any error, omission or mis-statement. This plan is for illustrative purposes only and should be used as such by any prospective purchaser. The services, systems and appliances shown have not been tested and no guarantee as to their operability or efficiency can be given.
Made with Metropix ©2022

Energy Efficiency Rating		
	Current	Potential
Very energy efficient - lower running costs		
(92 plus) A		
(81-91) B		
(69-80) C		
(55-68) D		
(39-54) E		
(21-38) F		
(1-20) G		
Not energy efficient - higher running costs		
England & Wales	EU Directive 2002/91/EC	

Environmental Impact (CO ₂) Rating		
	Current	Potential
Very environmentally friendly - lower CO ₂ emissions		
(92 plus) A		
(81-91) B		
(69-80) C		
(55-68) D		
(39-54) E		
(21-38) F		
(1-20) G		
Not environmentally friendly - higher CO ₂ emissions		
England & Wales	EU Directive 2002/91/EC	

