



Litchfield Way, NW11

Positioned In this desirable turning on the south side of Hampstead Garden suburb is this 5 bedroom 4 bathroom semi-detached family home.

The property is offered in very good condition and benefits from very well arranged accommodation over 3 floors. The ground floor comprises a kitchen diner with utility room, large 'L' shaped lounge dining room with French doors leading into a lovely rear garden and separate playroom.

The first floor offers 4 double bedrooms with 2 en suite shower rooms and a separate family bathroom. The master bedroom suite is located on the top floor and boasts a walk in dressing room and ensuite bathroom.

The amenities of market place, Temple Fortune and Golders Green are all within a short distance and the Heath Extension less than a 10 minute walk.

LOUNGE/DINING ROOM: KITCHEN/DINER: PLAYROOM: MASTER EN SUITE BEDROOM WITH DRESSING ROOM:
4 FURTHER BEDROOMS (2 WITH EN SUITE): FAMILY BATHROOM: GUEST WC: REAR GARDEN: OFF-STREET
PARKING

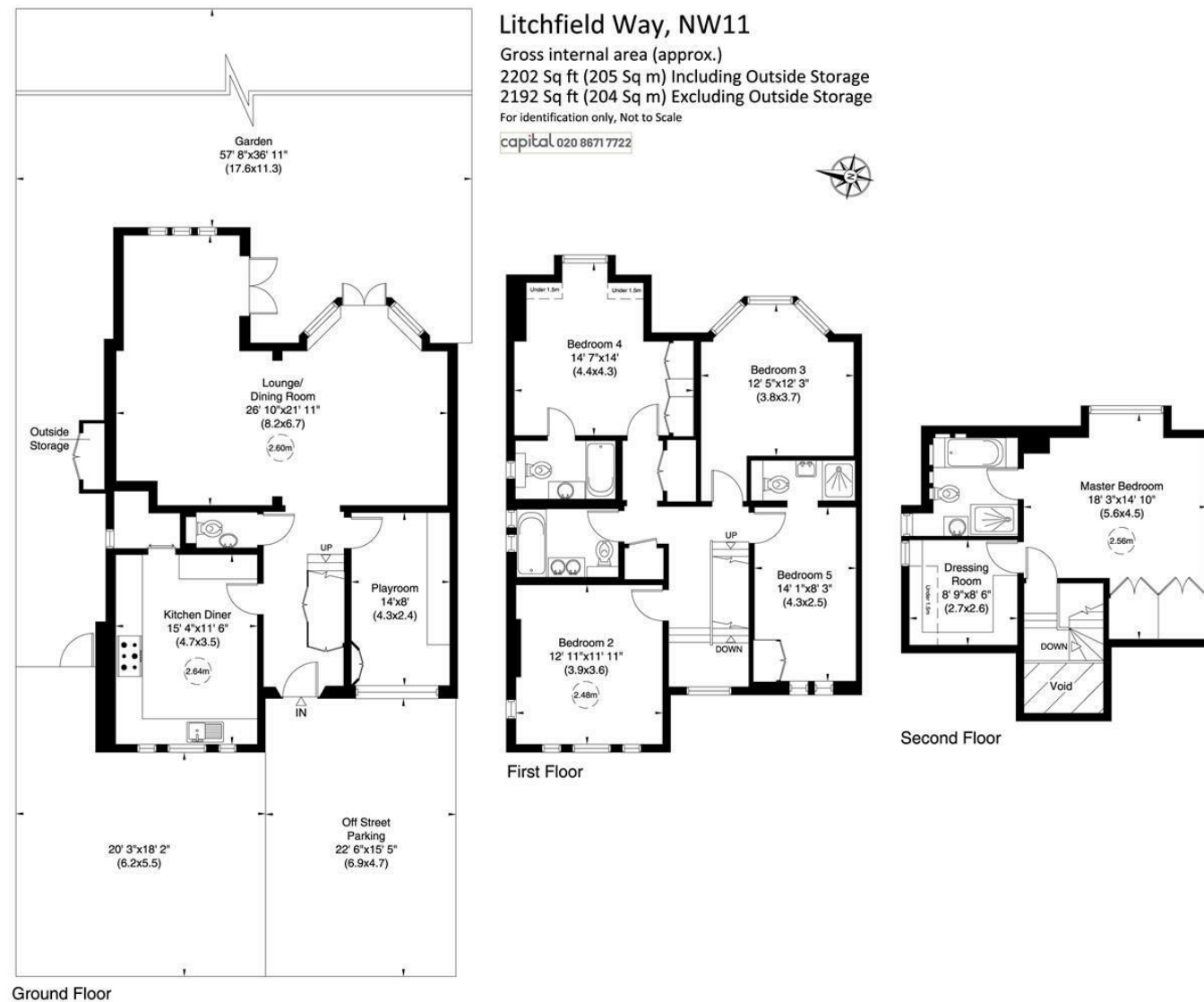
SOLE AGENT

£2,095,000



SALES 020 8458 7311 E sales@glentree.com
RENTALS 020 8209 1144 E rentals@glentree.com
FAX 020 8209 0307 W www.glentree.com

Glentree Estates Ltd
698 Finchley Road
London NW11 7NE



Not to scale, for guidance only and must not be relied upon as a statement of fact. All measurements and areas are approximate only (and have been prepared in accordance with the current edition of the RICS Code of Measuring Practice).

