

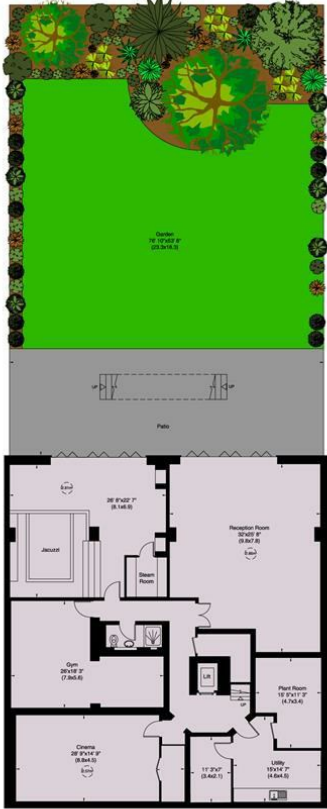


**Milespit Hill, Mill Hill NW7**

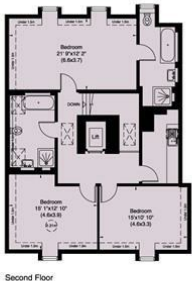
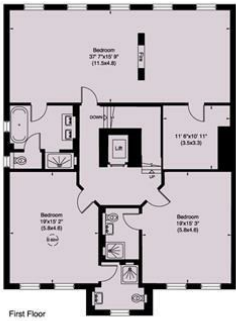
ELEVEN TREES IS AN OUTSTANDING NEW GATED DEVELOPMENT OF JUST THREE INDIVIDUAL PROPERTIES, SITUATED IN MILL HILL, ONE OF NORTH LONDON'S MOST SOUGHT AFTER AREAS.

The Mount is a stunning six bedroom home, set over four floors measuring over 7,900 sq ft with a passenger lift and an elevated terrace leading on to a private garden area. The lower ground floor is dedicated to leisure and entertainment, featuring an entertainment/family room, gym and cinema room, plus an infinite swim spa and steam room.

**Guide Price £3,250,000**



The Mount, Milespit Hill, NW7  
Gross internal area (approx.)  
7,996 Sq ft (743 Sq m)  
For identification only, not to scale  
Floor Plan by **appliedgroup** 020 8011 7122



Not to scale. Not guaranteed and must not be relied upon as a statement of fact. All measurements and areas are approximate only and have been prepared in accordance with the current edition of the BS5393 Code of Measuring Practice.





Energy Efficiency Rating		Current	Potential
Very energy efficient - lower running costs			
(92 plus) A			
(81-91) B			
(69-80) C			
(55-68) D			
(39-54) E			
(21-38) F			
(1-20) G			
Not energy efficient - higher running costs			
England & Wales		EU Directive 2002/91/EC	

Environmental Impact (CO <sub>2</sub> ) Rating		Current	Potential
Very environmentally friendly - lower CO <sub>2</sub> emissions			
(92 plus) A			
(81-91) B			
(69-80) C			
(55-68) D			
(39-54) E			
(21-38) F			
(1-20) G			
Not environmentally friendly - higher CO <sub>2</sub> emissions			
England & Wales		EU Directive 2002/91/EC	

