

Lytton Close N2

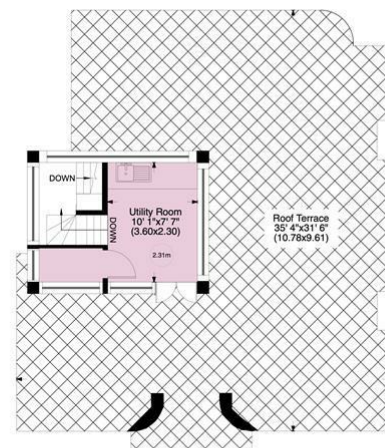
Gross internal area (approx.)
193 Sq m (2074 Sq ft) Including Plant Room
191 Sq m (2053 Sq ft) Excluding Plant Room
For identification only, Not to Scale



Ground Floor



First Floor



Second Floor



Lytton Close, N2

A fabulous Grade II listed, Art Deco “Suntrap” style property, designed in the 1930s by the architect G.G. Winbourne, located in this delightful cul-de-sac on the south side of Hampstead Garden Suburb, just off Linden Lea.

Benefitting from 4 good size bedrooms and 2 bathrooms (1 en suite) this gorgeous family home has been refurbished to a high standard. Internally you're welcomed with a well-proportioned hallway which leads into a fully equipped kitchen breakfast room, a T.V family/playroom, and a lounge/dining room across the rear of the property with doors leading onto the rear garden and a guest w.c.

The principal bedroom has an en suite shower room and built in wardrobes. There are 3 remaining bedrooms which share a separate newly fitted family bathroom. On the top floor there is an spacious utility room, leading onto a large roof garden/terrace currently used as an outdoor gym.

Further benefits include off-street parking for 2 cars and within a short walk of Lyttelton Playing Fields, Norrice Lea Synagogue and the shopping and transport facilities of Hampstead Garden Suburb's the Market Place.

DRAWING ROOM: DINING ROOM: KITCHEN/BREAKFAST ROOM: FAMILY ROOM: PRINCIPAL BEDROOM WITH EN SUITE:
3 FURTHER BEDROOMS: FAMILY BATHROOM: UTILITY ROOM: GUEST WC: REAR GARDEN: ROOF TERRACE & OFF-STREET PARKING

SOLE AGENT

Asking Price £1,999,999



SALES 020 8458 7311
RENTALS 020 8209 1144
FAX 020 8209 0307

E sales@glentree.com
E rentals@glentree.com
W www.glentree.com

Glentree Estates Ltd
698 Finchley Road
London NW11 7NE

