

, Deacons Rise, N2

Sole agents for this detached family home situated in a secluded road in the Suburb and within walking distance of East Finchley Station.

Spacious open-plan kitchen/family room, large lounge, master bedroom with en-suite bathroom, 5 further bedrooms, large family bathroom, 2 en-suite shower rooms, guest cloakroom and separate studio.

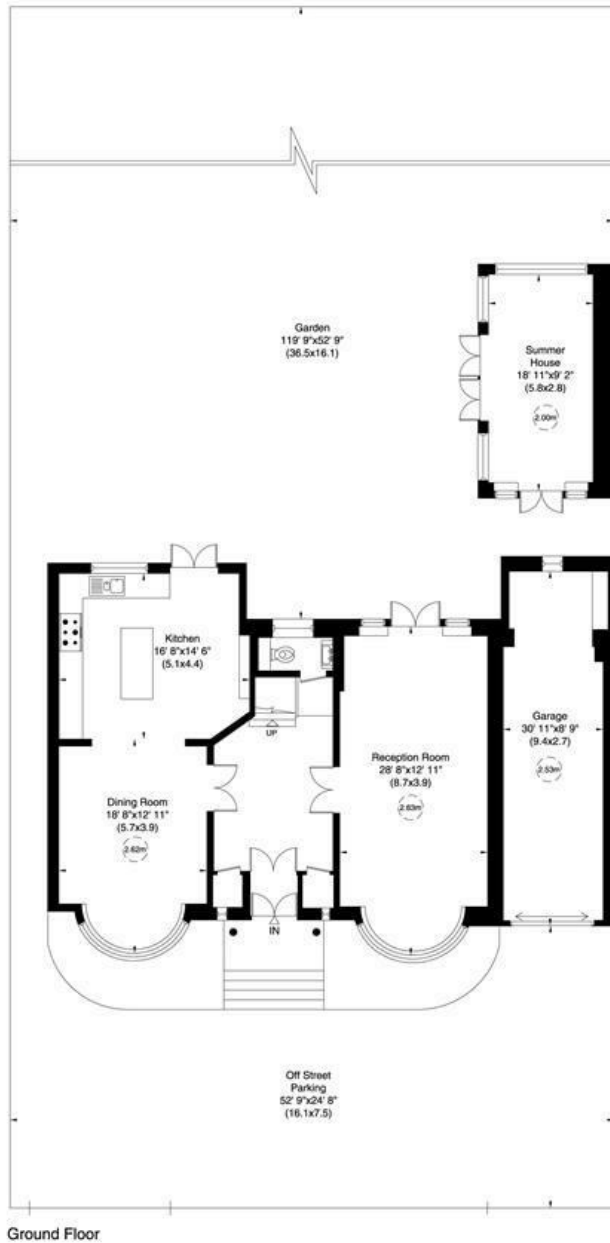
Additional benefits include a carriage driveway for four cars, double garage and landscaped garden.

Deacons Rise is located in the heart of Hampstead Garden Suburb and moments away from the amenities of The Market Place, Lyttelton playing fields and Norrice Lea Synagogue.

Available unfurnished

Long let

£1,750 Per Week



Deacons Rise, N2

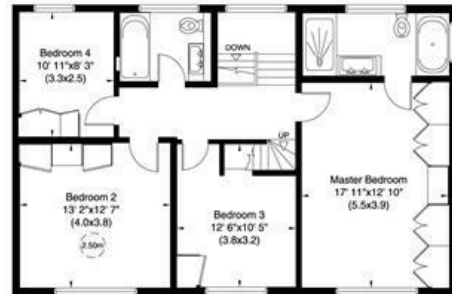
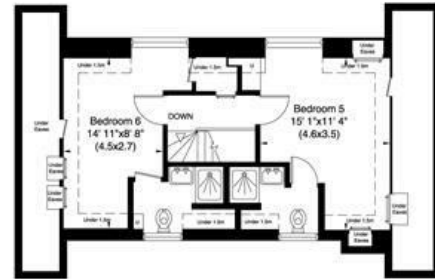
Gross internal area (approx.)

2776 Sq ft (258 Sq m) Including Summer House and Garage

2298 Sq ft (213 Sq m) Excluding Summer House and Garage

For identification only, Not to Scale

Floor Plan by **capital group** 020 8671 7722



Not to scale, for guidance only and must not be relied upon as a statement of fact. All measurements and areas are approximate only (and have been prepared in accordance with the current edition of the RICS Code of Measuring Practice).

