



Flat 2, Ionic Court, Finchley Road, NW11

Luxury apartment located on the first floor of this newly built development, The Beaumont which is situated on the corner of Finchley Road and Helenslea Avenue, within minutes of the amenities of Golders Green and within walking distance of Hampstead Heath.

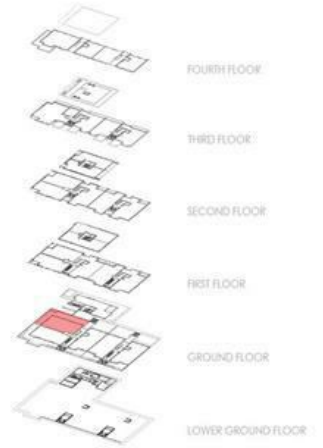
This excellent apartment features an open-plan lounge/dining room opening onto a private balcony, fully fitted kitchen, utility room, 3 double bedrooms, 2 bathrooms (1 en-suite) and guest cloak room.

Facilities include 12 hour concierge, secure underground parking, separate storage room and beautiful communal gardens for residents.

Available unfurnished.

Energy Efficiency Rating - B84

£1,038 Per Week



GROUND FLOOR

- LIVING
- BEDROOMS
- BATHROOMS/WC'S
- STORAGE
- CIRCULATION
- EXTERNAL PRIVATE AMENITY
- EXTERNAL GREEN

Total Area : 121.2 m² / 1304.6' sq ft
Private Amenity : 87.5 m² / 941.7' sq ft

3 BEDROOM APARTMENT

Floor plans shown for Devonshire Court and Temple Court NW11 have been prepared with due care, however the information is intended as a preliminary guide only. All measurements are approximate and taken to the widest point.

Energy Efficiency Rating		
	Current	Potential
Very energy efficient - lower running costs		
(92 plus) A		
(81-91) B		
(69-80) C		
(55-68) D		
(39-54) E		
(21-38) F		
(1-20) G		
Not energy efficient - higher running costs		
England & Wales	EU Directive 2002/91/EC	

Environmental Impact (CO ₂) Rating		
	Current	Potential
Very environmentally friendly - lower CO ₂ emissions		
(92 plus) A		
(81-91) B		
(69-80) C		
(55-68) D		
(39-54) E		
(21-38) F		
(1-20) G		
Not environmentally friendly - higher CO ₂ emissions		
England & Wales	EU Directive 2002/91/EC	

