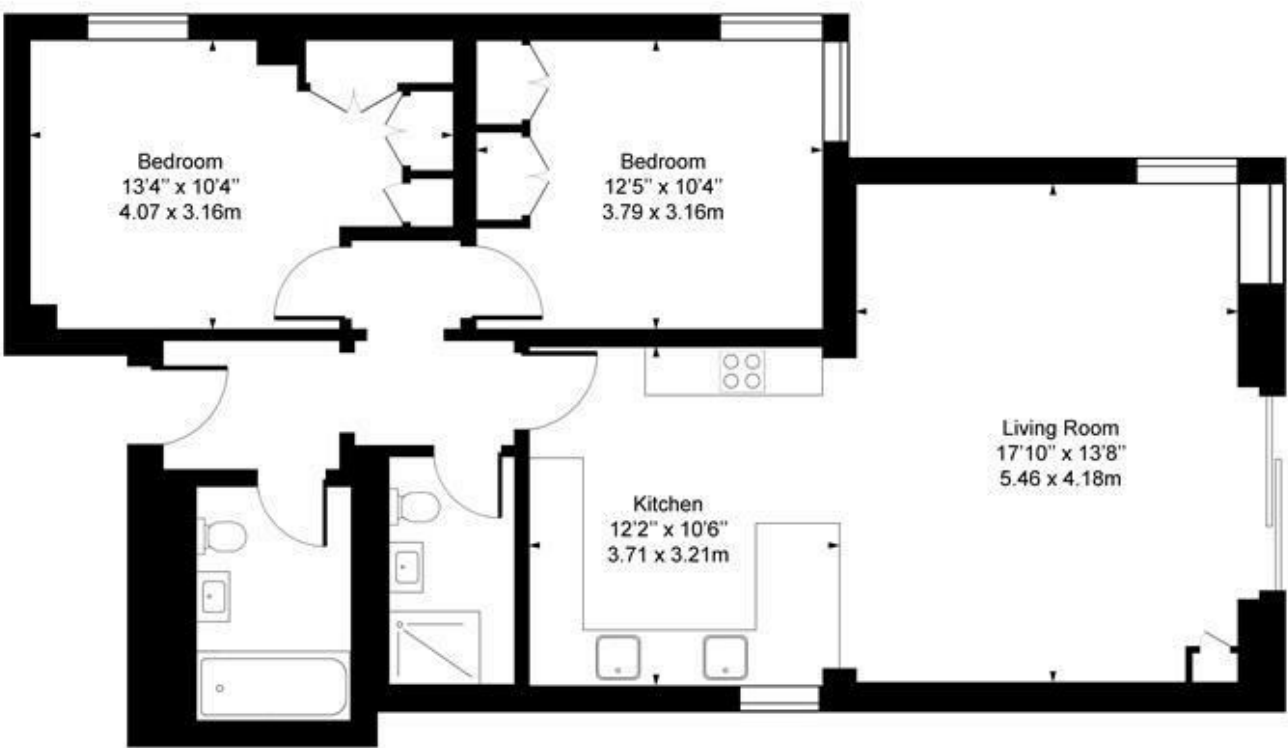


Beechcroft Avenue, NW11

Approx. Gross Internal Area 888 sq ft / 82.58 sq m



Ground Floor

For Illustration Purposes Only - Not To Scale

This floor plan should be used as a general outline for guidance only and does not constitute in whole or in part an offer or contract. Any intending purchaser or lessee should satisfy themselves by inspection, search, enquires and full survey as to the correctness of each statement. Any areas, measurements or distances quoted are approximate and should not be used to value a property or be the basis of any sale or let.



Beechcroft Avenue, Golders Green NW11

Located just minutes from Golders Green Station, both Golders Green & Temple Fortune High streets and plenty of local schools and places of worship, Oakview Lodge offers a selection of stunning brand newly fully refurbished apartments to rent.

This spacious ground apartment offers 2 double bedrooms, 2 bathrooms, a very large open plan living room and Kosher kitchen along with direct access to a communal garden.

All apartments are allocated one space in the secure car park and access to the communal gardens.

Available July 2025

Furnished options available, to be discussed  
Long Let  
Barnet Council  
EPC rating C

£660 Per Week



