

COLUMBAS
DRIVE

NW3





A beautifully positioned five bedroom duplexed apartment (3,700 sq ft/343.7 sq m) situated on the ground and first floors of this extremely popular purpose built block backing onto Kenwood.

The advantage of the layout of this generously sized apartment is that most of the accommodation benefits from the first floor. Bedrooms four and five, plus the utility room are downstairs, which allows for a good separation between the living quarters.

The well-planned accommodation includes three reception rooms all leading onto the large balcony terrace with magnificent views over the communal gardens, tennis court and a golf practice net.







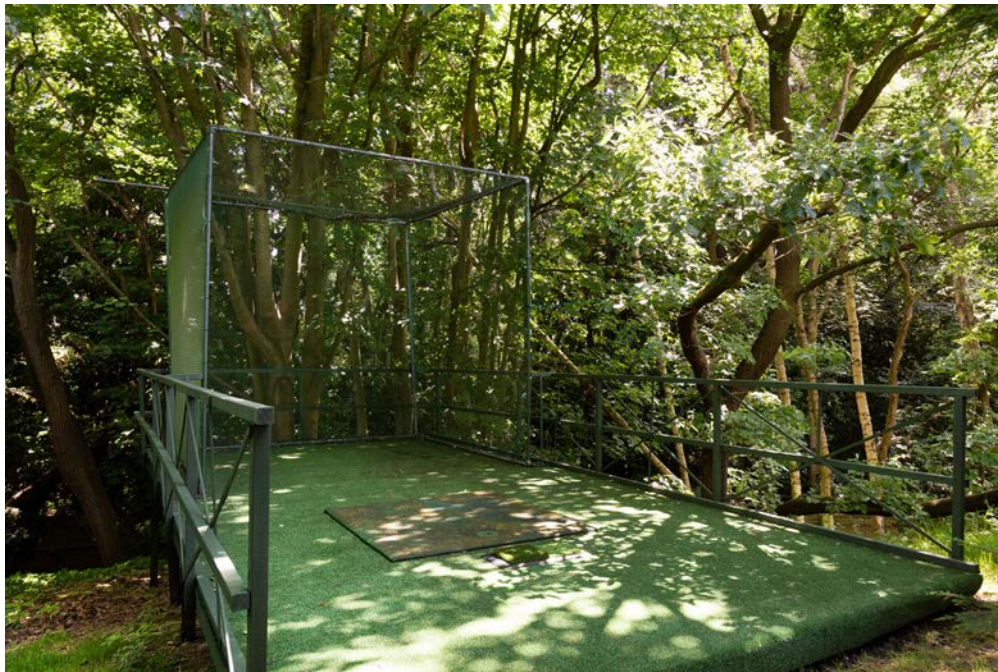




Columbas Drive is an exclusive development of 14 luxury apartments, approached by a private drive and enjoying a commanding position which overlooks 3.75 acres of landscaped communal grounds, Kenwood and beyond towards the West End and The City of London.

Communal areas, security services and leisure facilities are of the highest standards. The block benefits from 24-hour portorage, and there is secure underground parking for three cars.







● EATING

- 01 Gaucho
- 02 La Cage Imaginaire
- 03 Gail's Bakery
- 04 Villa Blanca
- 05 Ginger & White
- 06 Cote Brasserie
- 07 LLS Cafe Deli
- 08 The Hampstead Butcher & Providore
- 09 Mimmo La Bufalo

● SHOPPING

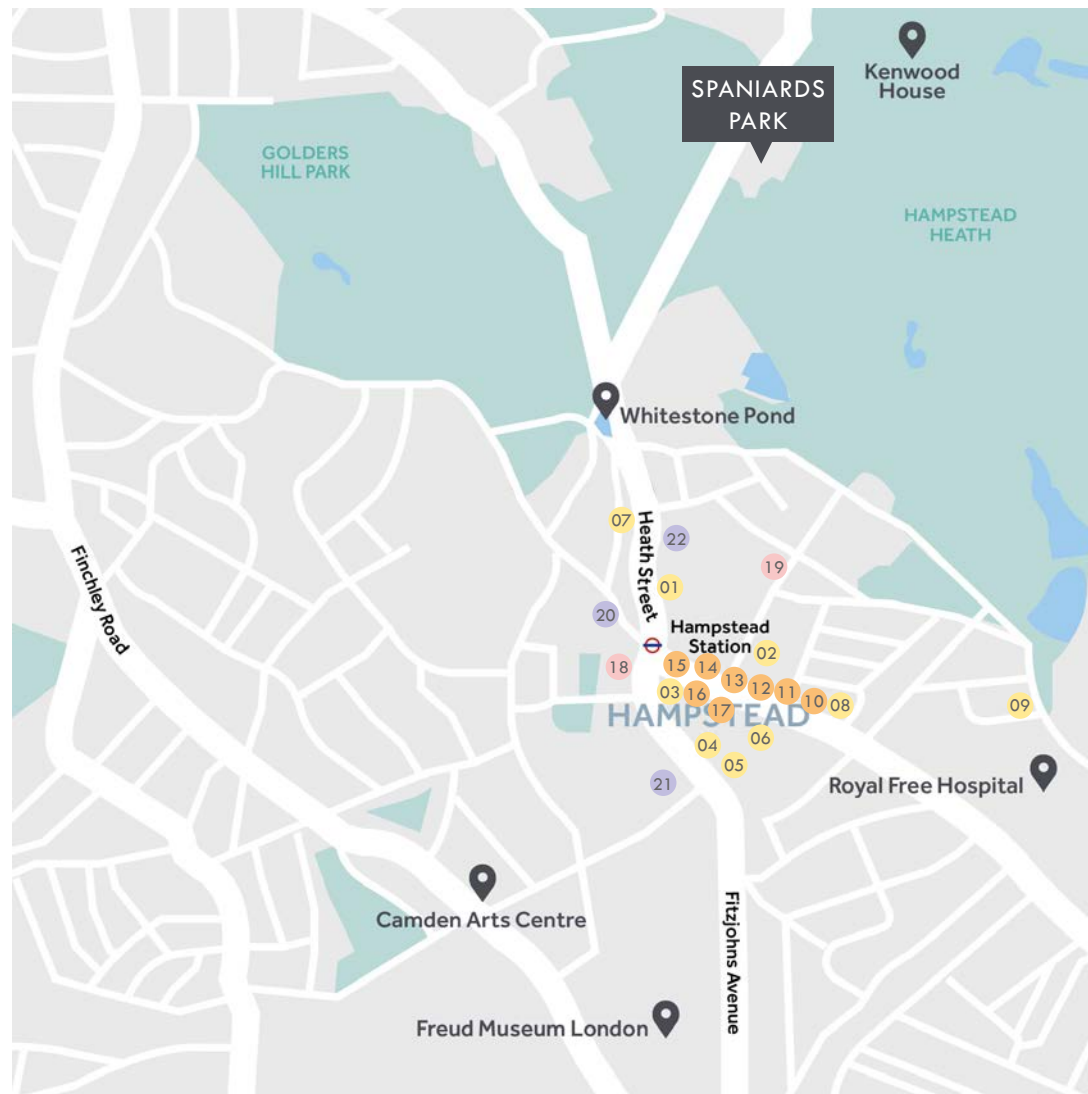
- 10 Claudie Pierlot
- 11 Reiss
- 12 Hobbs
- 13 Petit Bateau
- 14 Nicole Farhi
- 15 Sandro
- 16 Tara Jarmon
- 17 Waterstones

● CULTURE

- 18 Everyman
- 19 Burgh House and Hampstead Museum

● SCHOOLS

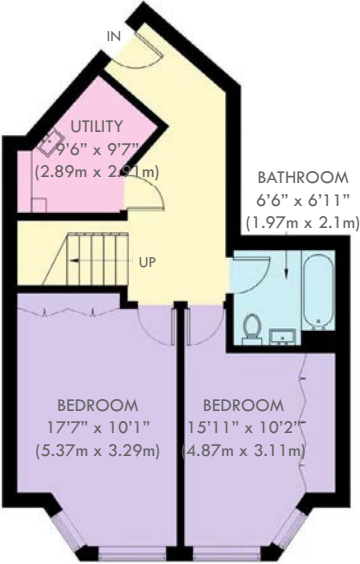
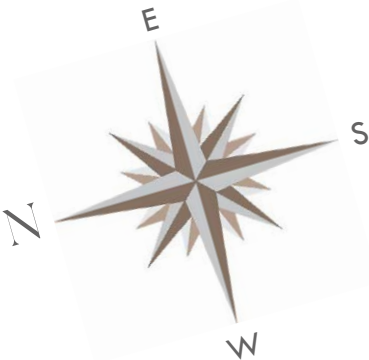
- 20 UCS Hampstead Jnr
- 21 Devonshire House Preparatory School
- 22 Heathside Preparatory School



The property is situated just off Spaniards Road, which runs from Hampstead Village via Heath Street to the south west, to Hampstead Lane and Highgate Village to the north, past the historic Spaniards Inn. The important Kenwood House is nearby, as are both Hampstead and Highgate golf courses.

SHARE OF FREEHOLD | EPC: B

Gross Internal Area (approx.)
3,700 sq ft (343.7 sq m)



GROUND FLOOR



FIRST FLOOR



glentree

NEW HOMES

SOLE AGENT

+44 (0)20 8731 9500

newhomes@glentree.com

www.glentree.com