



## Corringham Road, Hampstead Garden Suburb NW11

Nestled amongst a square consisting of 7 beautifully positioned Grade II\* listed houses which are a striking example of Parker and Unwin architecture in a Lutyens design, is this stunning and very well-proportioned 3 double bedroom property.

Internally it has been sympathetically and extremely well planned and renovated by the current owners so is offered in very good condition. To the ground floor there is a lovely reception hallway that accesses the dining room and a separate drawing room with a door leading onto a picturesque and stunningly manicured west facing rear garden. The first floor offers a principal bedroom with dressing room and en-suite which also has a fabulous terrace and a separate family bathroom serving the remaining 2 bedrooms.

This fine home is also a stone's throw from the Heath Extension and a few minutes' walk to Golders Green station and its amenities. We have also been advised by the current owners they have historically and successfully applied for consent to convert the loft. This has now lapsed so any buyer would need to reapply for consent with Barent council and HGST.

RECEPTION HALL WAY: DRAWING ROOM: DINING ROOM: KITCHEN: UTILITY ROOM:  
3 BEDROOMS: MASTER WITH TERRACE, DRESSING ROOM AND EN SUITE: FAMILY BATHROOM: GARDEN.

**SOLE AGENT**

**Guide Price £2,000,000**



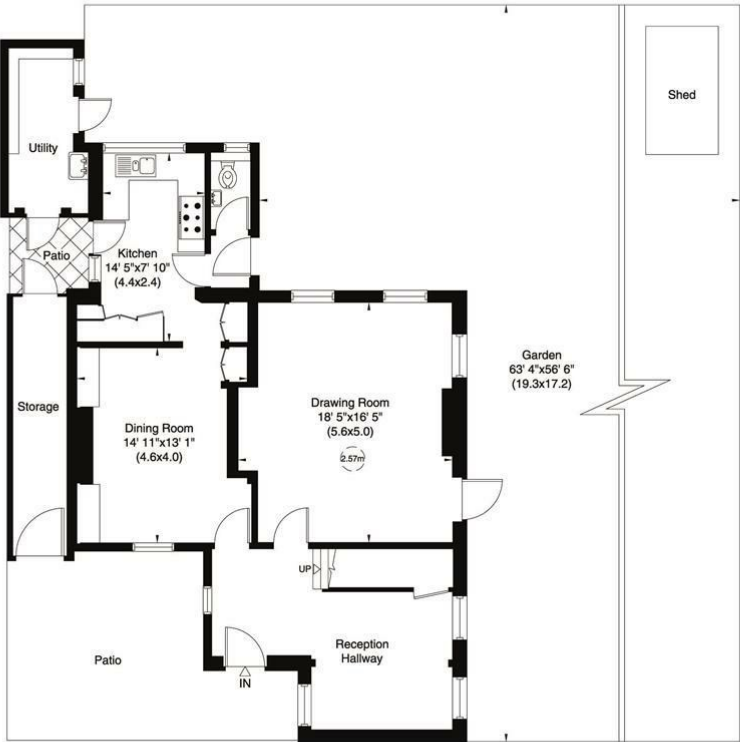
SALES 020 8458 7311 E [sales@glentree.com](mailto:sales@glentree.com)  
RENTALS 020 8209 1144 E [rentals@glentree.com](mailto:rentals@glentree.com)  
FAX 020 8209 0307 W [www.glentree.com](http://www.glentree.com)

Glentree Estates Ltd  
698 Finchley Road  
London NW11 7NE

### Corringham Road, NW11

Gross internal area (approx.)  
177 Sq m (1906 Sq ft) Including Storage  
Storage  
Gross internal area (approx.)  
8 Sq m (83 Sq ft)  
For identification only, Not to Scale

Floor Plan by **capital group** 020 8671 7722



Ground Floor



First Floor

Not to scale, for guidance only and must not be relied upon as a statement of fact. All measurements and areas are approximate only (and have been prepared in accordance with the current edition of the RICS Code of Measuring Practice).



