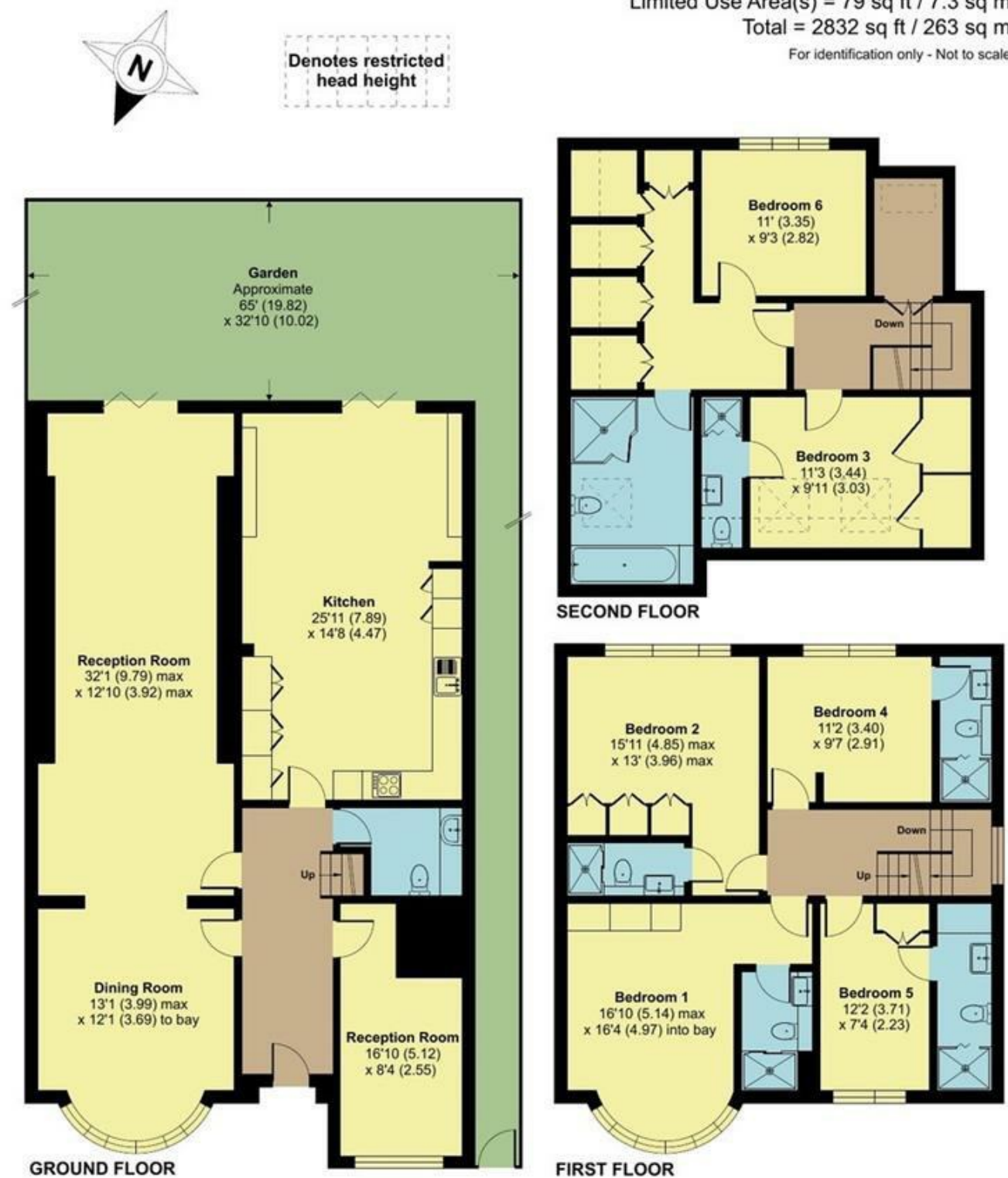


Beaufort Drive, London, NW11

Approximate Area = 2753 sq ft / 255.7 sq m
Limited Use Area(s) = 79 sq ft / 7.3 sq m
Total = 2832 sq ft / 263 sq m
For identification only - Not to scale

CELEBRATING
40
YEARS



Beaufort Drive, NW11

Offering over 2700sqft (253 sqm) arranged over 3 floors, is this 6-bedroom 6 bathroom detached family home.

On the ground floor the property has a large entrance hallway and triple length reception room, there is a well-proportioned kitchen breakfast family room, a separate family room and a guest W.C. Five of the 6 bedrooms offer ensuite shower rooms with a family bathroom servicing the remaining bedroom.

The property is situated moments away from the amenities of Temple Fortune while the green open spaces Hampstead Heath are also within close proximity. Brookland School is also within easy walking distance as are the open green spaces

ENTRANCE HALL: RECEPTION ROOM: DINING ROOM: KITCHEN/BREAKFAST ROOM: FAMILY ROOM:
PRINCIPAL BEDROOM WITH EN SUITE: 5 BEDROOMS (4 EN SUITES): FAMILY BATHROOM: GUEST WC:
OFF-STREET PARKING: REAR LANDSCAPED GARDEN

SOLE AGENT

Asking Price £1,350,000

Floor plan produced in accordance with RICS Property Measurement 2nd Edition, Incorporating International Property Measurement Standards (IPMS2 Residential). © nidecom 2025. Produced for Godfrey and Barr. 2024 REF: 1241075

