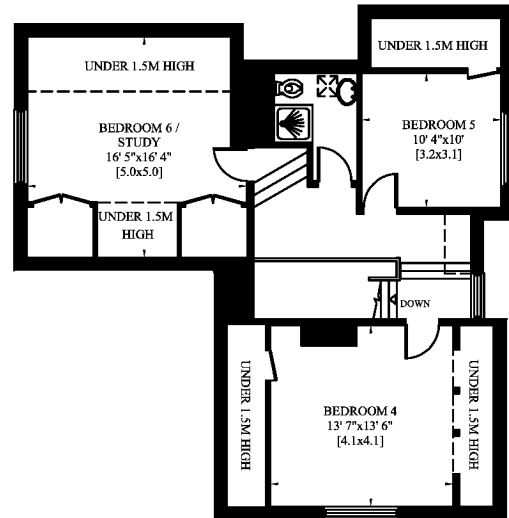


TURNERS WOOD LONDON NW11

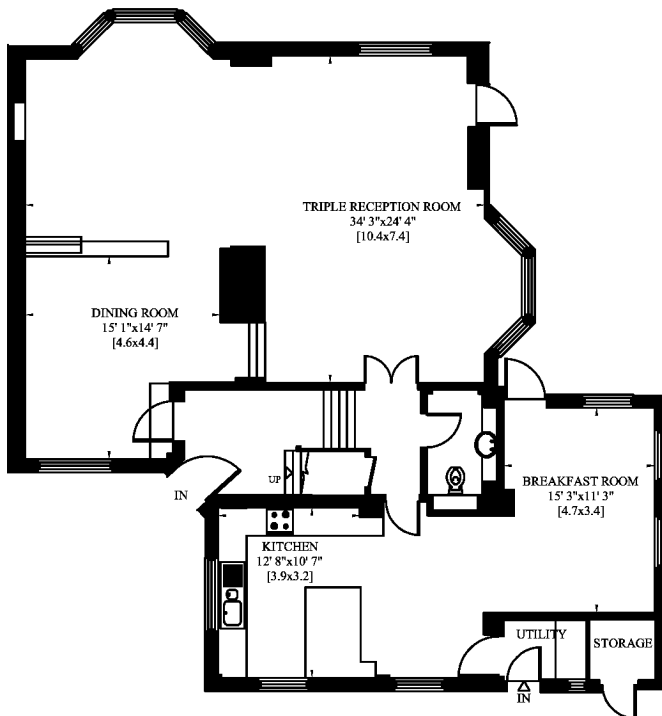
Gross Internal Area Including Storage : 344 Sq. metres
3710 Sq.foot

Gross Internal Area Under Eaves : 20 Sq. metres
212 Sq.foot

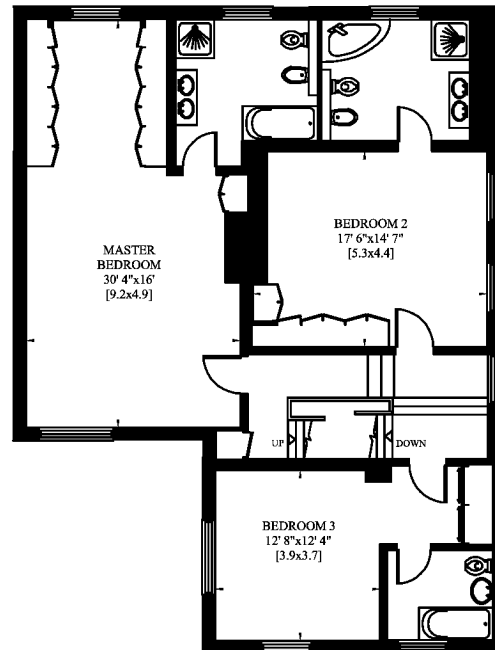
Total Gross Internal Area: 364 Sq. metres
3922 Sq.foot



SECOND FLOOR



GROUND FLOOR



FIRST FLOOR