



glentree

NEW HOMES

020 8731 9500

www.glentreenewhomes.com



Rosary Manor, The Ridgeway, NW7

Part of the final collection is this unique and stunning one bedroom 1st & 2nd floor apartment for sale, set on stunning grounds overlooking uninterrupted views of Mill Hill Valley, this development offers the highest quality of specification and lifestyle in NW7.

Rosary Manor has eleven individually designed apartments, each with unparalleled views across the Mill Hill Conservation Area and its 152 acres of beautifully maintained farm and parkland. This semi-rural setting is unique for London properties, giving residents highly desirable peace and security that perfectly complement Rosary Manor's luxurious interior environments. Each apartment is truly one of a kind, designed with finesse to work within this highly distinctive manor house with its origins in the 17th century.

This beautiful property for sale in Mill Hill, NW7, is perfect for those seeking peace and tranquility. Book a viewing today.

Furniture in photographs are Computer Generated

LUXURY ONE BEDROOM DUPLEX APARTMENT; INTERNAL LIFT; MASTER BEDROOM WITH EN-SUITE; STUDY; GUEST WC; LIVING ROOM; UTILITY ROOM; KITCHEN/DINING; LARGE ROOF TERRACE; RESIDENT'S GYM; OFF STREET PARKING; STUNNING COMMUNAL GARDENS

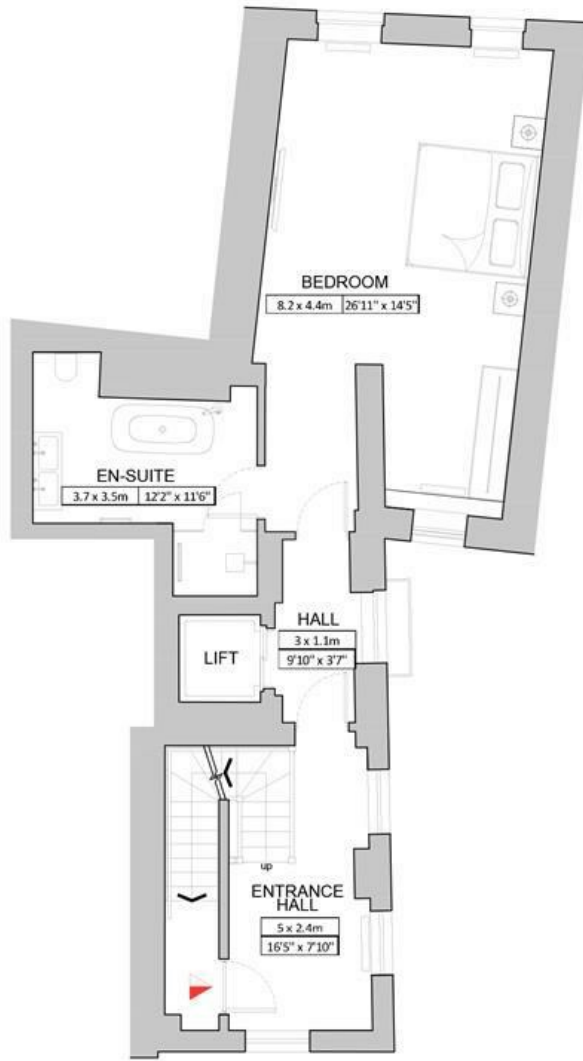
£1,000,000



NEW HOMES 020 8731 9500
FAX 020 8209 0307

E newhomes@glentree.com
W www.glentree.com

Glentree Estates Ltd
698 Finchley Road
London NW11 7NE



FIRST FLOOR PLAN

APARTMENT OCULUS
 GIA 130sq.m / 1400sq.f
 Floor area accuracy +/- 5%

Energy Efficiency Rating		Current	Potential
Very energy efficient - lower running costs			
(92 plus) A			
(81-91) B			
(69-80) C			
(55-68) D			
(39-54) E			
(21-38) F			
(1-20) G			
Not energy efficient - higher running costs			
England & Wales		72	79
	EU Directive 2002/91/EC		

Environmental Impact (CO ₂) Rating		Current	Potential
Very environmentally friendly - lower CO ₂ emissions			
(92 plus) A			
(81-91) B			
(69-80) C			
(55-68) D			
(39-54) E			
(21-38) F			
(1-20) G			
Not environmentally friendly - higher CO ₂ emissions			
England & Wales		72	79
	EU Directive 2002/91/EC		

