



glentree
INTERNATIONAL
020 8458 7311
www.glentree.com

THE BISHOPS AVENUE N2



FREEHOLD. SOLE AGENT.
GUIDE PRICE £12,500,000

ENTRANCE HALL: RECEPTION ROOM: DINING ROOM: FAMILY ROOM &
STUDY: KITCHEN: PRINCIPAL BEDROOM WITH DRESSING ROOM & HIS
AND HERS BATHROOMS: 7 FURTHER BEDROOM SUITES: SWIMMING
POOL: GYM & TREATMENT ROOM: SAUNA: STEAM ROOM: GAMES
ROOM: CINEMA ROOM: 2 STAFF BEDROOMS: UTILITY ROOM: CHEFS
PREP KITCHEN: UNDERGROUND PARKING.



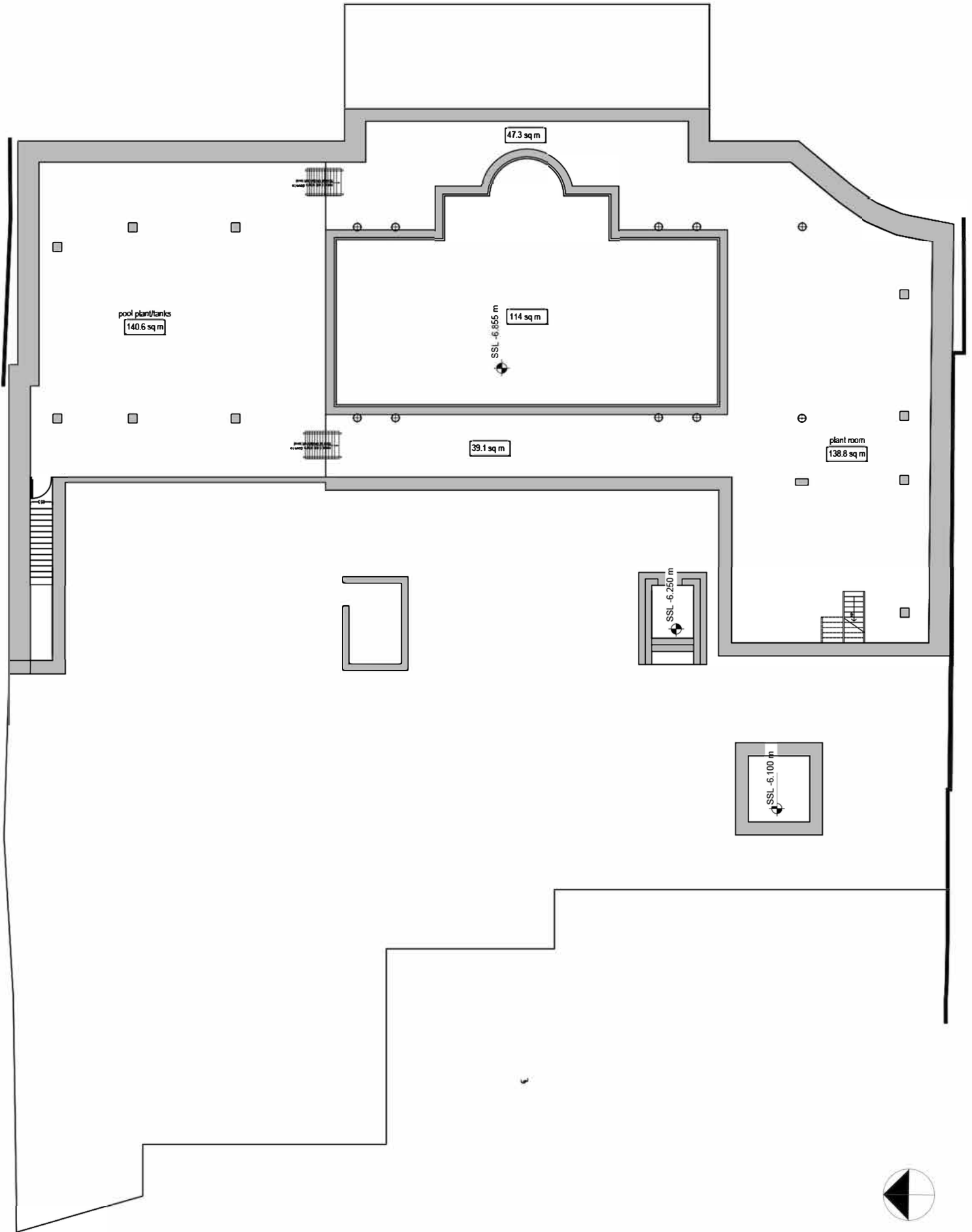
This is approximately a 0.68 acre (0.0277 hectares) Freehold plot, in the most prestigious part of The Bishops Avenue where construction has been partly completed for a very large mansion of circa 31,000ft², with incredible ceiling heights.

Since the shell of the property is complete, it is perfectly possible that a finished product could be achieved within a year or 18 months and as such, would save a great deal of development time and money. The property is located towards the Kenwood end of The Bishops Avenue and is surrounded by the most prestigious properties in this internationally renowned turning.



57 THE BISHOP AVENUE, LONDON, N2 0BJ

APROX. GROSS INTERNAL AREA*
31,376.798ft² - 2,915m²
Illustration for identification only, Not to scale
*As defined by RICS - Code of Measuring Practice.

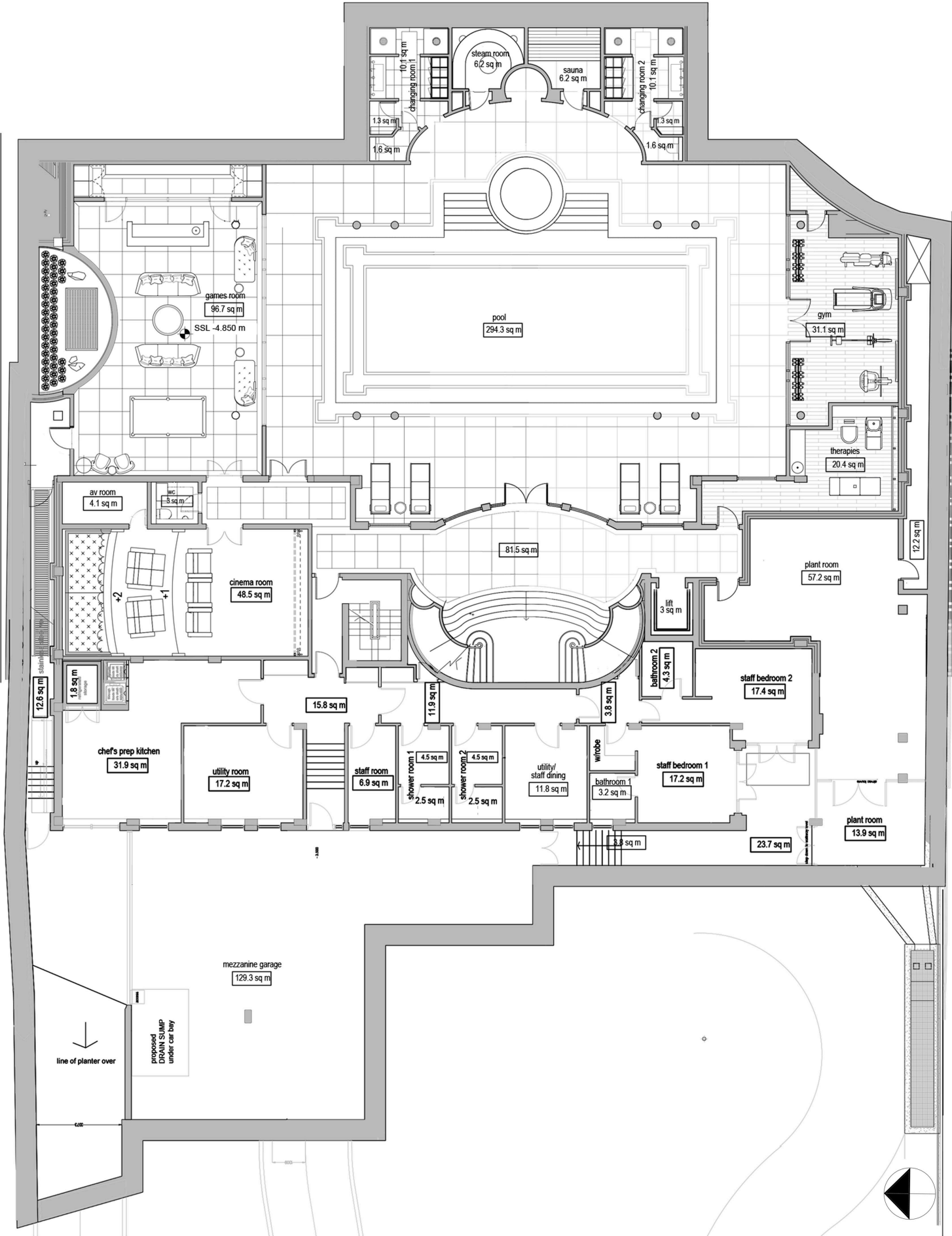


SUB BASEMENT - 5,332.4ft² - 495.4m² aprox.

57 THE BISHOP AVENUE, LONDON, N2 0BJ

APOX. GROSS INTERNAL AREA*
 31,376.798ft² - 2,915m²

Illustration for identification only, Not to scale
 *As defined by RICS - Code of Measuring Practice.



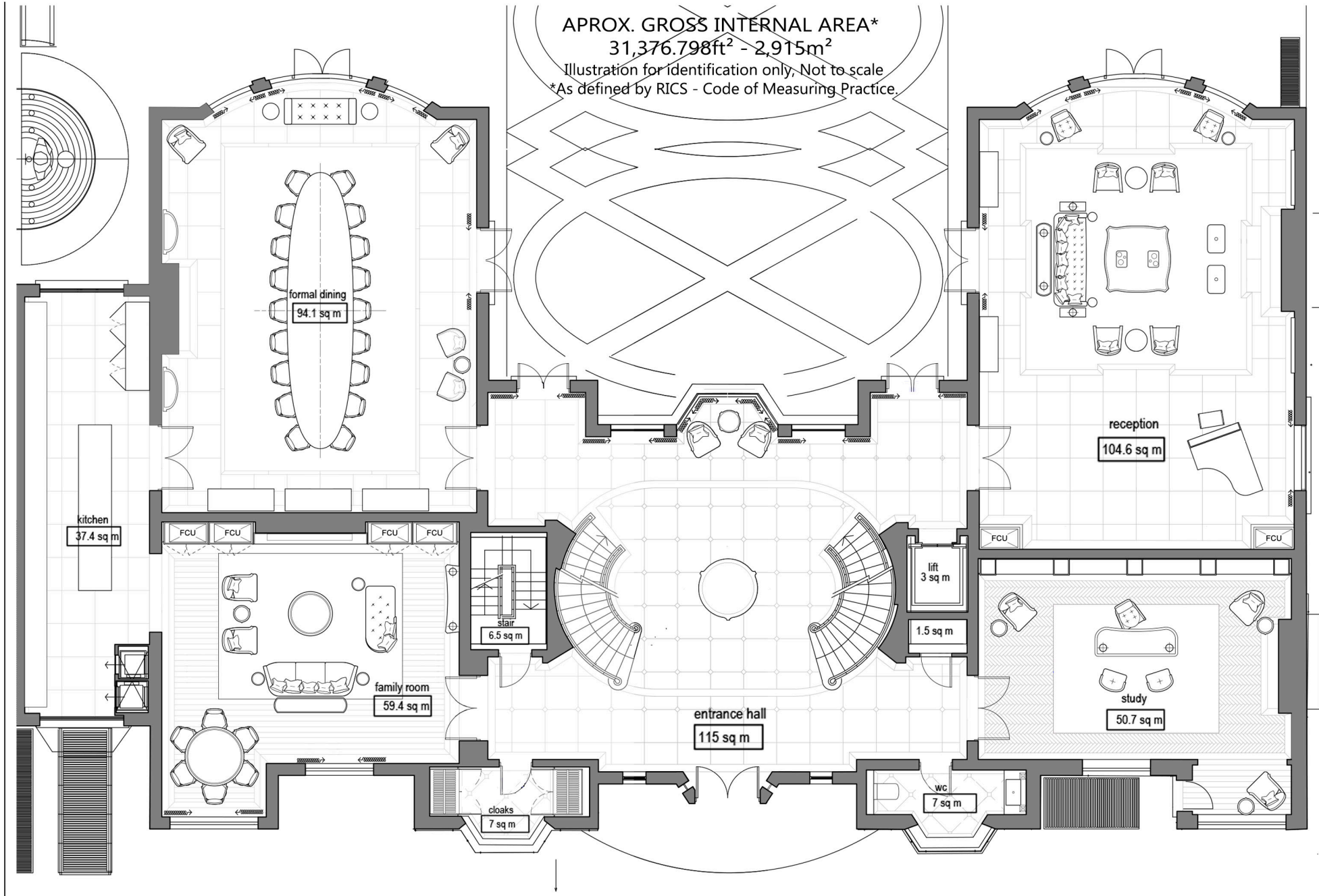
57 THE BISHOP AVENUE, LONDON, N2 0BJ

APROX. GROSS INTERNAL AREA*

31,376.798ft² - 2,915m²

Illustration for identification only, Not to scale

*As defined by RICS - Code of Measuring Practice.

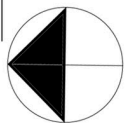
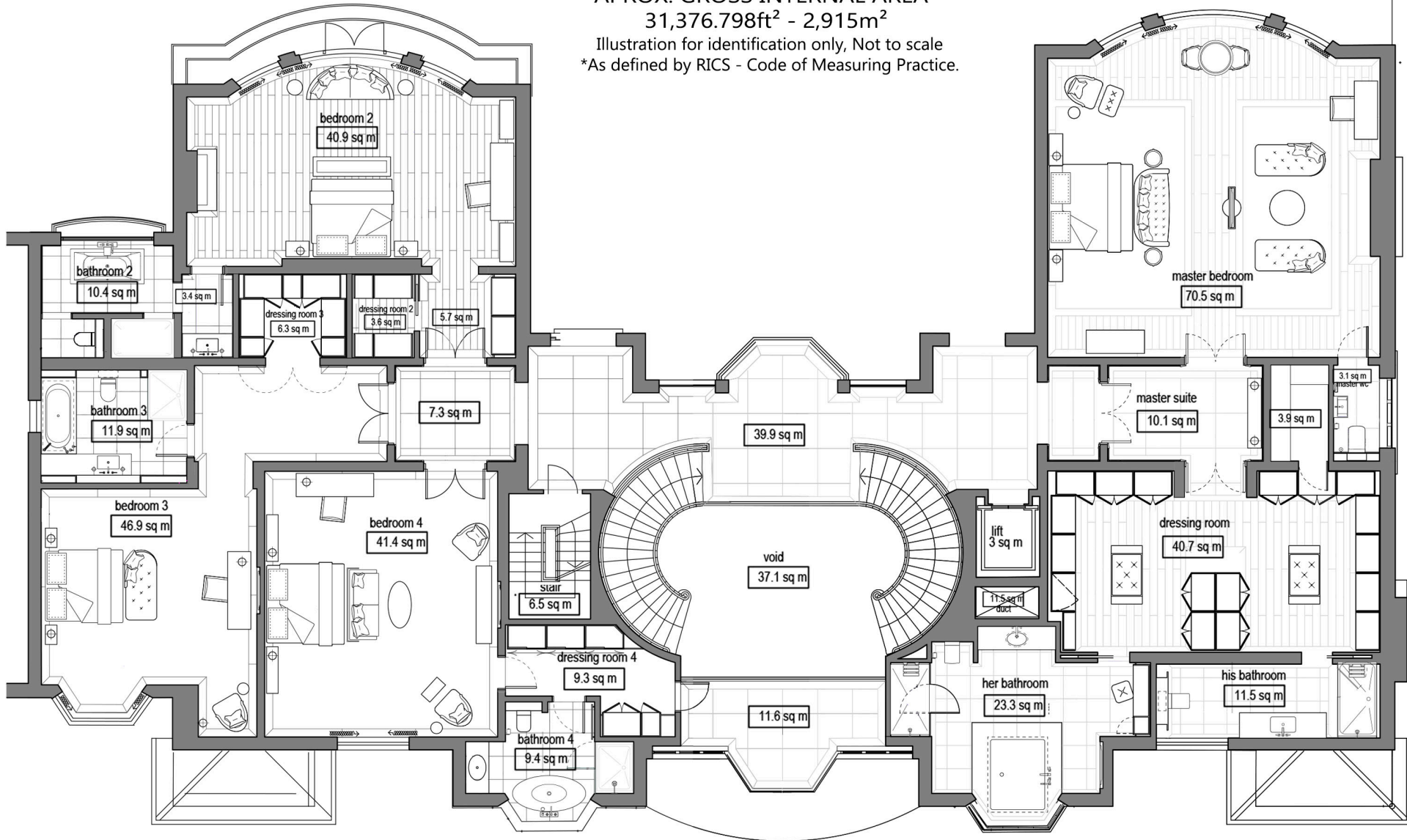


GROUND FLOOR - 5,459.45ft² - 507.20m² aprox.

57 THE BISHOP AVENUE, LONDON, N2 0BJ

APROX. GROSS INTERNAL AREA*
31,376.798ft² - 2,915m²

Illustration for identification only, Not to scale
*As defined by RICS - Code of Measuring Practice.

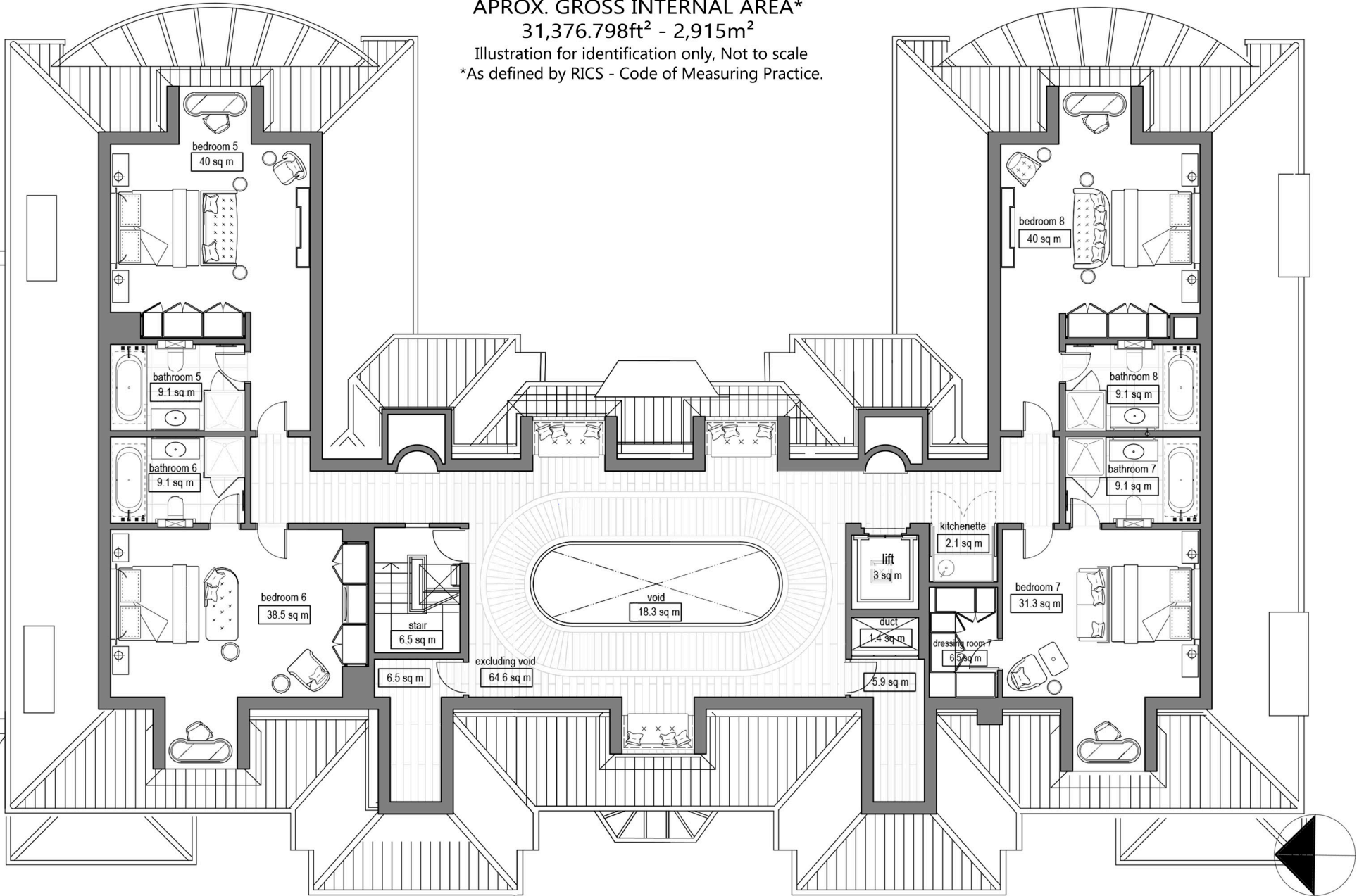


FIRST FLOOR - 5,294.76ft² - 491.90m² aprox.

57 THE BISHOP AVENUE, LONDON, N2 0BJ

APROX. GROSS INTERNAL AREA*
31,376.798ft² - 2,915m²

Illustration for identification only, Not to scale
*As defined by RICS - Code of Measuring Practice.



SECOND FLOOR - 3,378.79ft² - 313.90m² aprox.