



SUNNINGDALE  
THE BISHOPS AVENUE | LONDON N2





# SUNNINGDALE

THE BISHOPS AVENUE | LONDON N2

## Imposing Double Fronted Detached Mansion

A rare opportunity to acquire this impressive residence in world renowned The Bishops Avenue, London N2. The plot extends to just under an acre and the house to approximately 10,118 sq ft including a swimming pool and a detached garage.





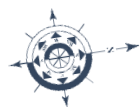
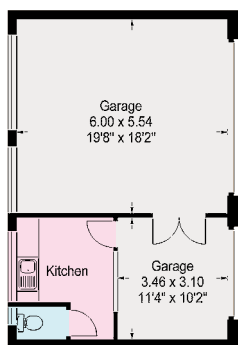
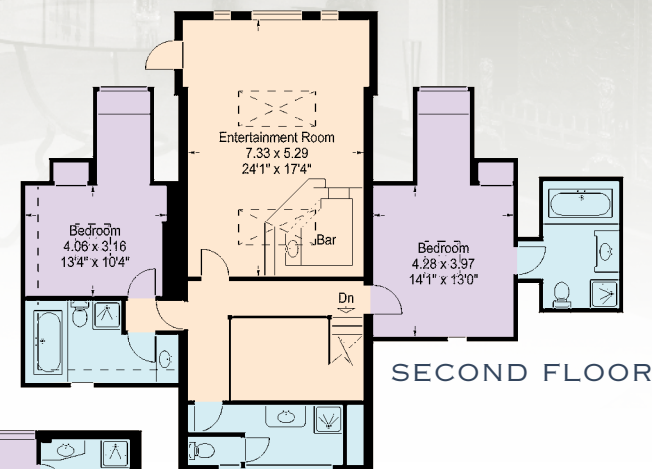
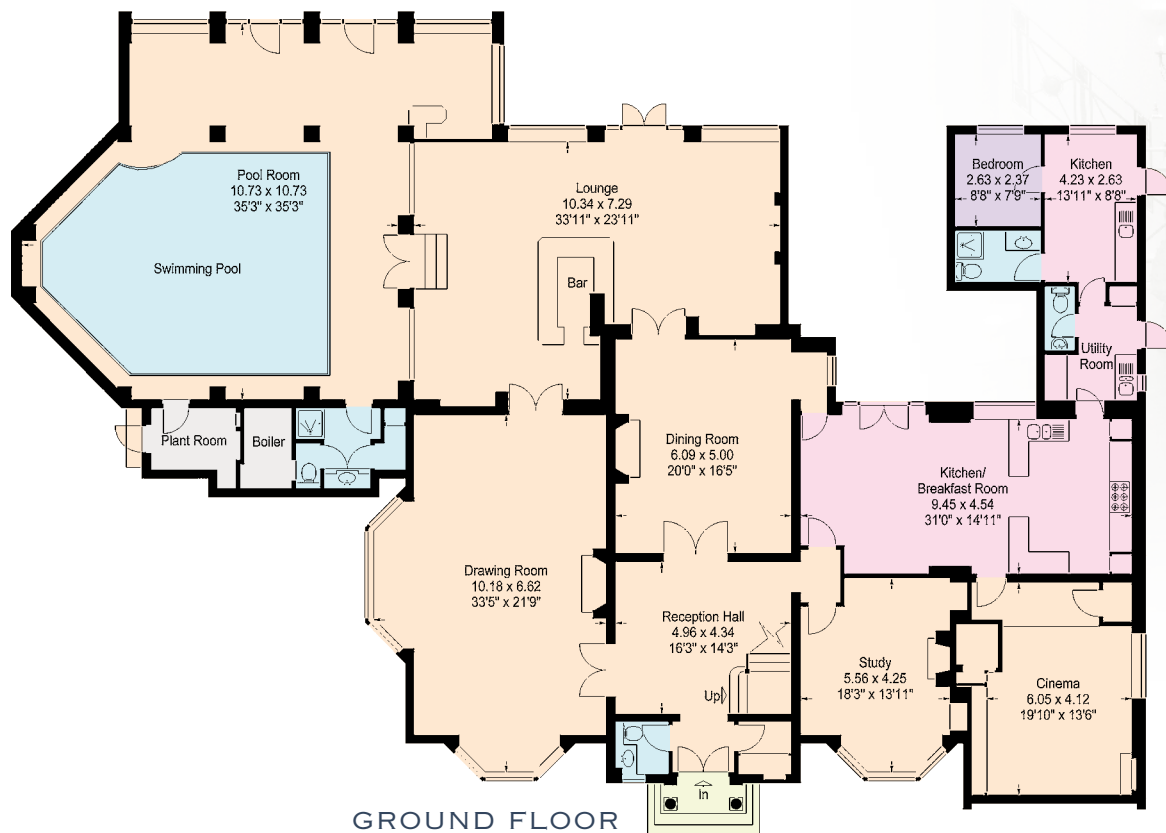
- 5 Reception Rooms
- 7 Bedrooms
- 7 Bathrooms
- South West Facing Garden
- Staff Flat
- Swimming Pool
- Double Garage
- Carriage Driveway



'Sunningdale' is offered in immaculate condition providing superb entertaining space including dining room, drawing room, informal lounge leading to swimming pool, study, large kitchen/breakfast room and a cinema room all on the same floor. In addition there are 7 bedrooms, 7 bathrooms (6 en suite) including a large master suite and separate staff accommodation. The property is set behind electric gates and benefits from a carriage driveway and a detached garage for 3 cars.



**Approximately 10,118 sq ft | Plot size approximately 0.9 acre | Freehold | Price Upon Application**

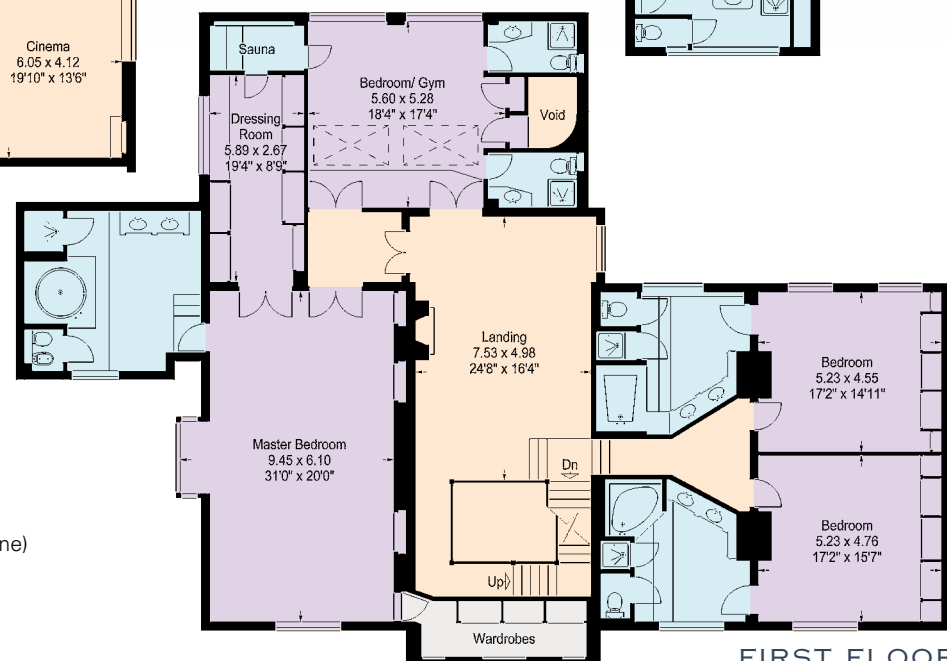


#### APPROX. GROSS INTERNAL FLOOR AREA

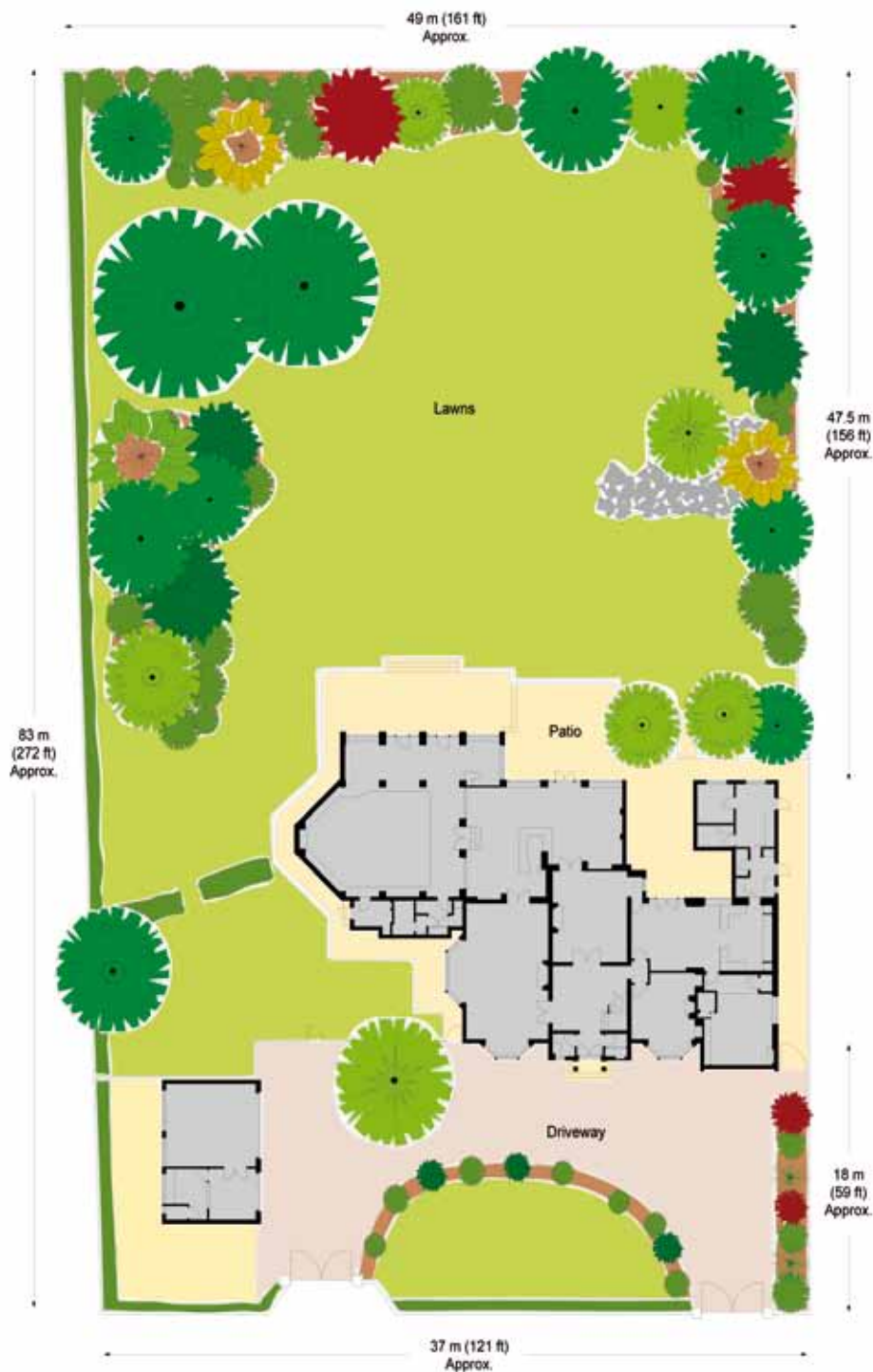
House - 885 Square Metres (9,526 Square Feet)

Garage - 55 Square Metres (592 Square Feet)

(Not including reduced height area below 1.5m - denoted with dashed line)







## Joint Sole Agents



Hampstead  
020 7431 8686  
[KnightFrank.co.uk](http://KnightFrank.co.uk)



glentree  
INTERNATIONAL  
020 8458 7311  
[www.glentree.co.uk](http://www.glentree.co.uk)



These plans are for guidance only and must not be relied upon as a statement of fact. Attention is drawn to the Important Notice.

### IMPORTANT NOTICE

1. Particulars: These particulars are not an offer or contract, nor part of one. You should not rely on statements by Knight Frank LLP or Glentree International in the particulars or by word of mouth or in writing ("information") as being factually accurate about the property, its condition or its value. Neither Knight Frank LLP nor Glentree International has any authority to make any representations about the property, and accordingly any information given is entirely without responsibility on the part of the agents, seller(s) or lessor(s). 2. Photos etc: The photographs show only certain parts of the property as they appeared at the time they were taken. Areas, measurements and distances given are approximate only. 3. Regulations etc: Any reference to alterations to, or use of, any part of the property does not mean that any necessary planning, building regulations or other consent has been obtained. A buyer or lessee must find out by inspection or in other ways that these matters have been properly dealt with and that all information is correct. 4. VAT: The VAT position relating to the property may change without notice. Particulars dated: August 2010. Photographs dated: July 2010.

Knight Frank LLP is a limited liability partnership registered in England with registered number OC305934. Our registered office is 55 Baker Street, London, W1U 8AN, where you may look at a list of members' names. 253826