



RIDGEFIELD
COURTENAY AVENUE, LONDON N6

RIDGEFIELD

COURTENAY AVENUE, LONDON N6

IMPRESSIVE HOUSE BACKING ONTO HIGHGATE GOLF COURSE



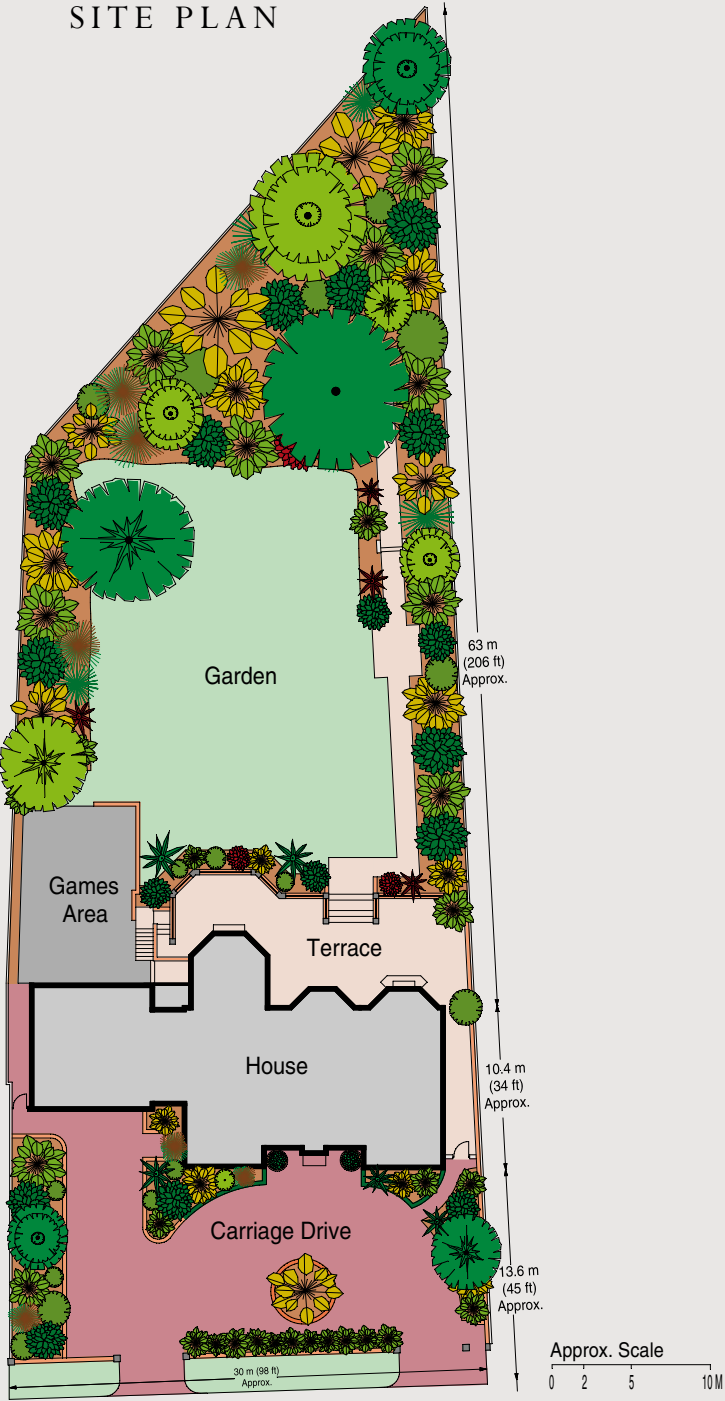
This imposing house benefits from a 30m frontage and backs directly onto Highgate Golf Course. The plot extends to over 0.5 acre and is situated in this very desirable private road with security controlled gates and CCTV.

The house has been extended to create a double garage with a large family/snooker room above. In addition there is a study and the original drawing room and dining room overlook the rear terrace and garden. There is an air conditioned gym to the lower ground floor and planning consent was previously obtained for a swimming pool to be built adjacent to this and behind the garage although this has now lapsed.



- ◆ 35' Drawing Room
- ◆ Dining Room
- ◆ Family Room
- ◆ Conservatory
- ◆ Fitted Kitchen
- ◆ 24' x 24' Family/Games Room
- ◆ Master Suite with Dressing Room and Bathroom
- ◆ 5 Further Bedrooms
- ◆ 4 Further Bathrooms
- ◆ Gymnasium
- ◆ Double Garage
- ◆ Wonderful Secluded Garden
- ◆ Security Protected Private Road
- ◆ Freehold





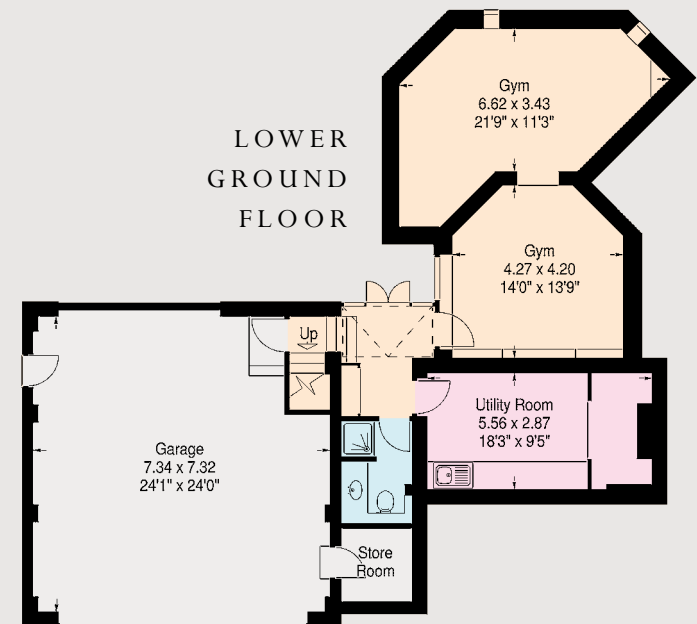
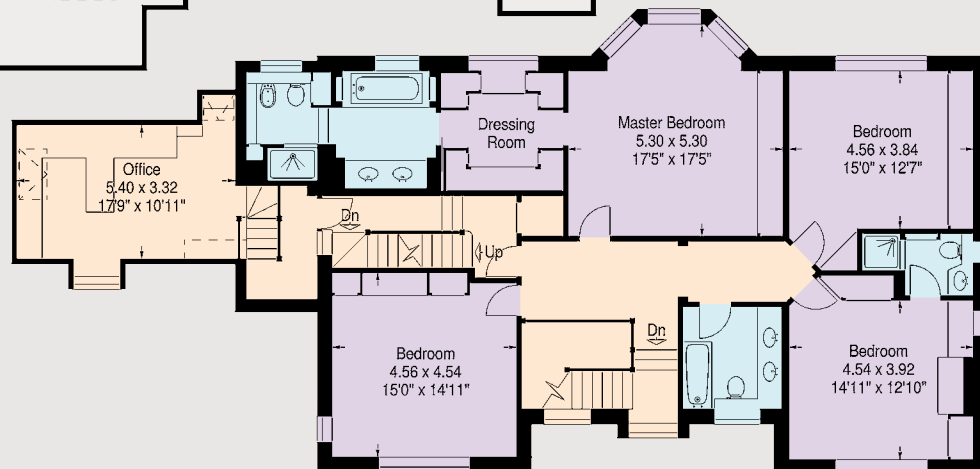
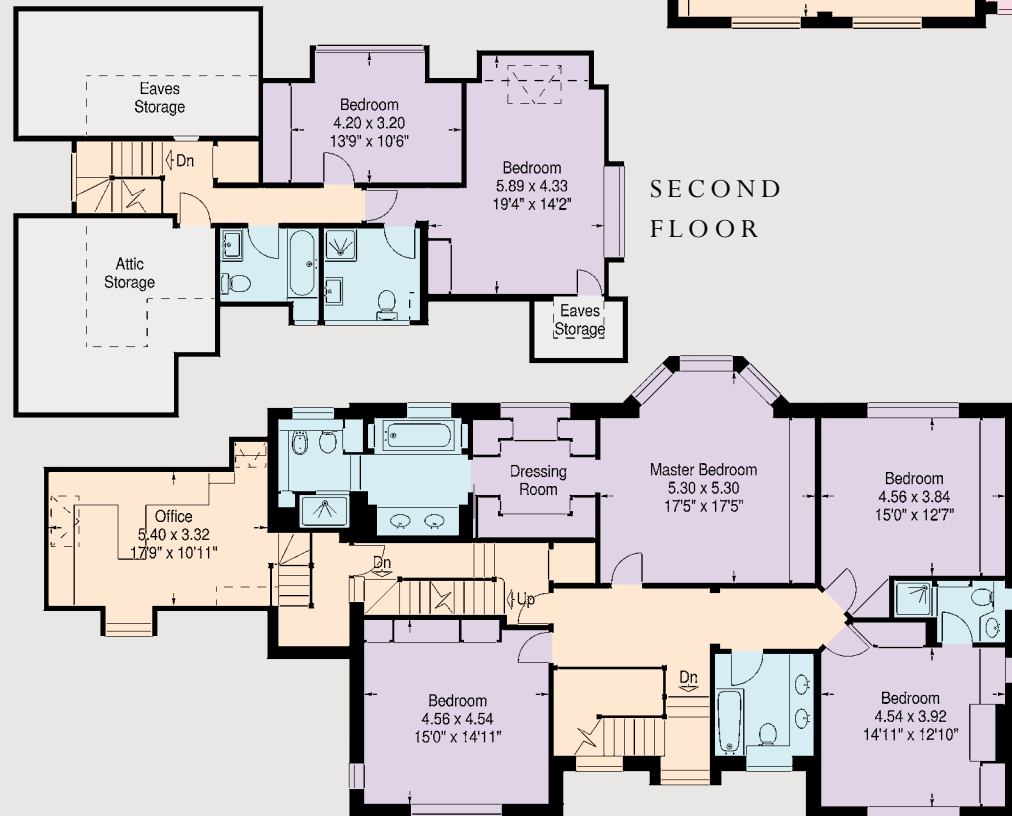
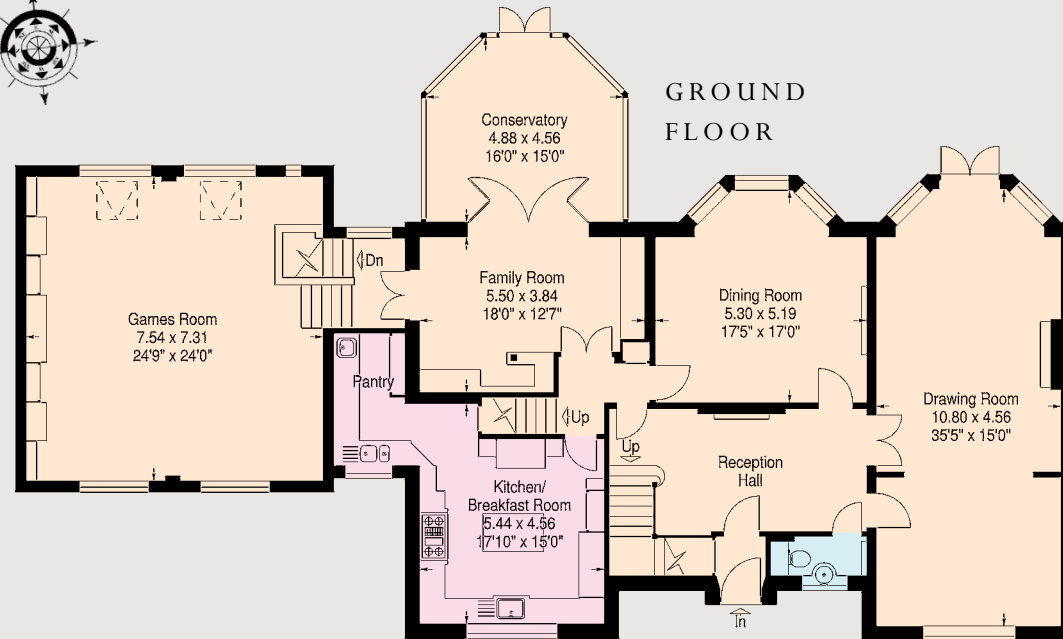
FLOOR PLAN

APPROXIMATE GROSS INTERNAL
FLOOR AREA

626 SQUARE METRES

6,733 SQUARE FEET

(NOT INCLUDING REDUCED
HEIGHT AREA BELOW 1.5M
DENOTED WITH DASHED LINE)



PLOT SIZE APPROXIMATELY 0.5 ACRE



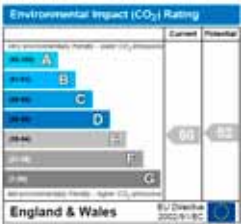
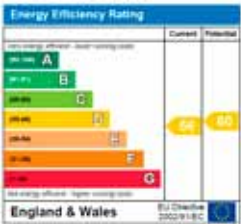
These plans are for guidance only and must not be relied upon as a statement of fact. Attention is drawn to the Important Notice.

Important notice

1. Particulars: These particulars are not an offer or contract, nor part of one. You should not rely on statements by Knight Frank LLP or Glentree International in the particulars or by word of mouth or in writing ("information") as being factually accurate about the property, its condition or its value. Neither Knight Frank LLP nor Glentree International have any authority to make any representations about the property, and accordingly any information given is entirely without responsibility on the part of the agents, seller(s) or lessor(s). 2. Photos etc: The photographs show only certain parts of the property as they appeared at the time they were taken. Areas, measurements and distances given are approximate only. 3. Regulations etc: Any reference to alterations to, or use of, any part of the property does not mean that any necessary planning, building regulations or other consent has been obtained. A buyer or lessee must find out by inspection or in other ways that these matters have been properly dealt with and that all information is correct. 4. VAT: The VAT position relating to the property may change without notice. Particulars dated: August 2010. Photographs dated: July 2010.

Knight Frank LLP is a limited liability partnership registered in England with registered number OC305934. Our registered office is 55 Baker Street, London, W1U 8AN, where you may look at a list of members' names.

253827



Joint Sole Agents


Hampstead
020 7431 8686
KnightFrank.co.uk


glentree
INTERNATIONAL
020 8458 7311
www.glentree.co.uk