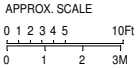
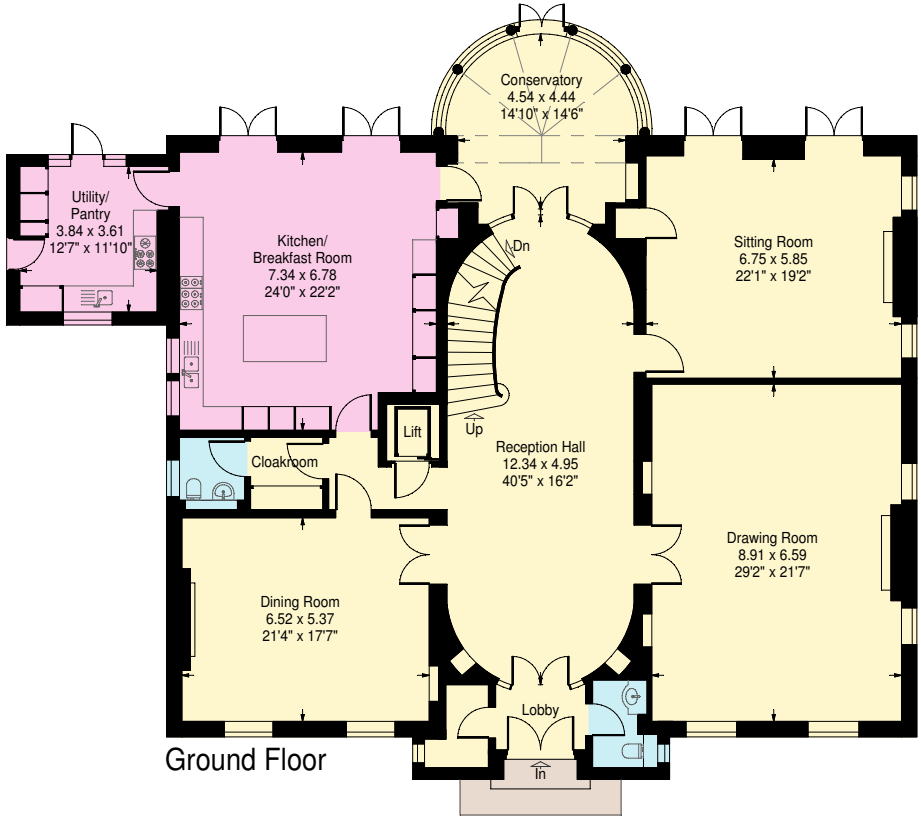


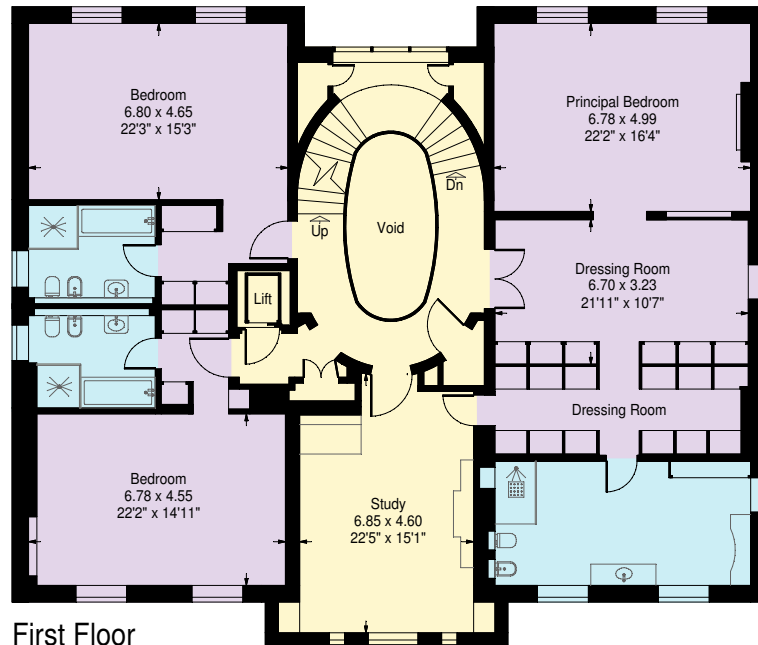
Winnington Road, London N2

Approximate Gross Internal Area:  
 1462.0 sq.m. / 15737 sq.ft.  
 (including garage, plant room and reduced  
 height area, below 1.5m - denoted with dashed line)

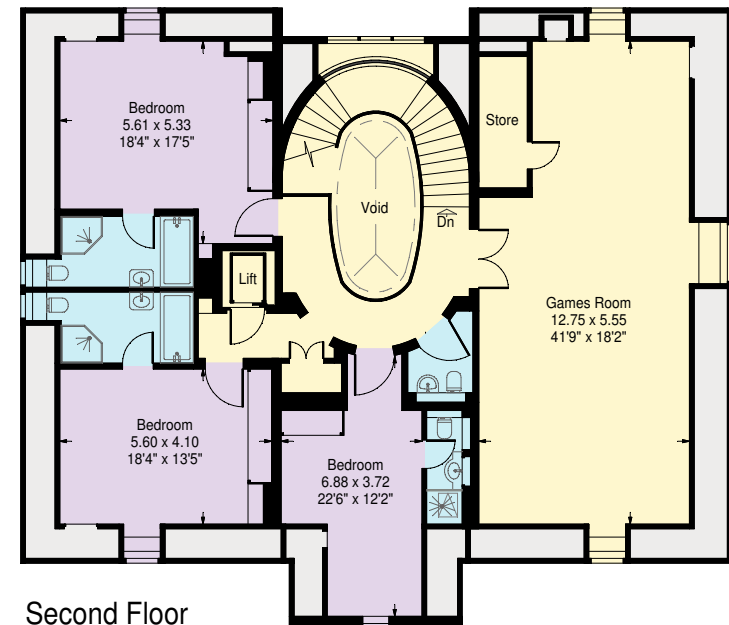


www.ProplanUK.co.uk  
 All measurements and figures are taken  
 in accordance with RICS guidelines.  
 This plan is for guidance only and must  
 not be relied upon as a statement of fact.

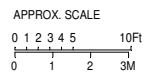
Winnington Road, London N2



First Floor



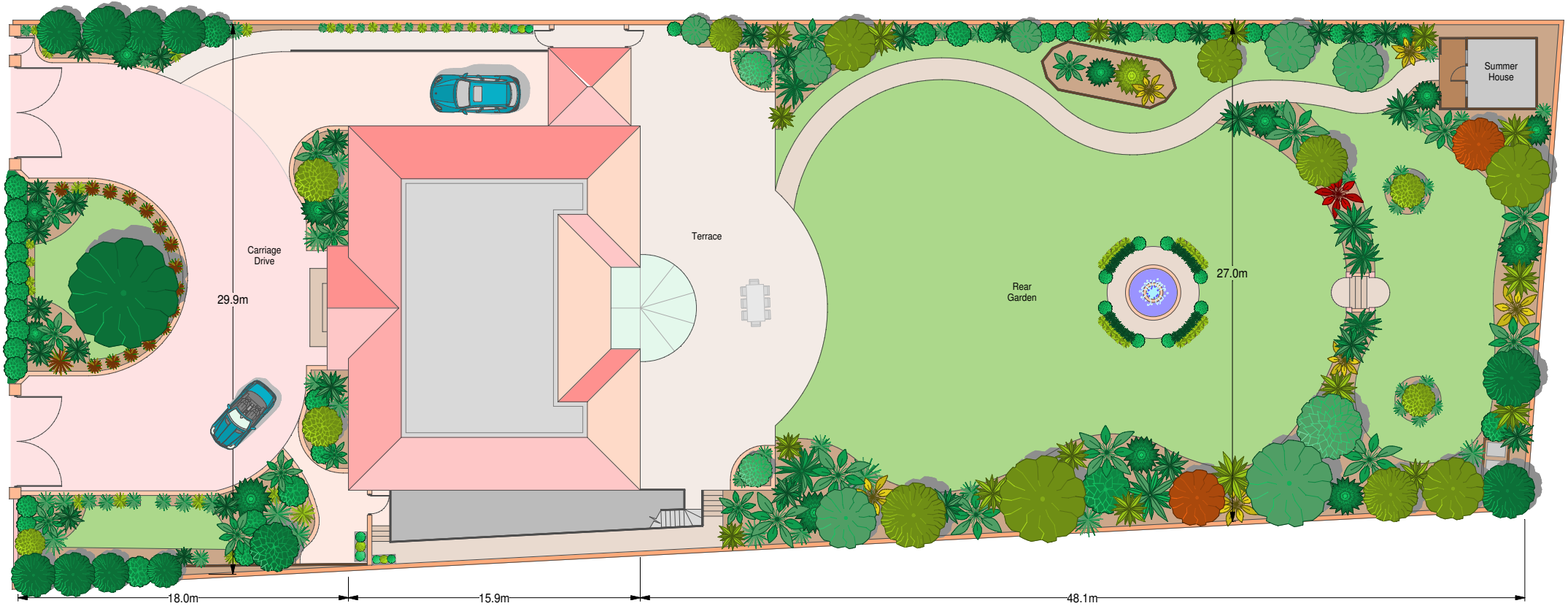
Second Floor



[www.ProplanUK.co.uk](http://www.ProplanUK.co.uk)  
All measurements and figures are taken  
in accordance with RICS guidelines.  
This plan is for guidance only and must  
not be relied upon as a statement of fact.

# Winnington Road, London N2

Approximate Site Area:  
0.58 acres



APPROX. SCALE  
0 1 2 3 4 5 10ft  
0 1 2 3m

[www.ProplanUK.co.uk](http://www.ProplanUK.co.uk)  
All measurements and figures are taken  
in accordance with RICS guidelines.  
This plan is for guidance only and must  
not be relied upon as a statement of fact.