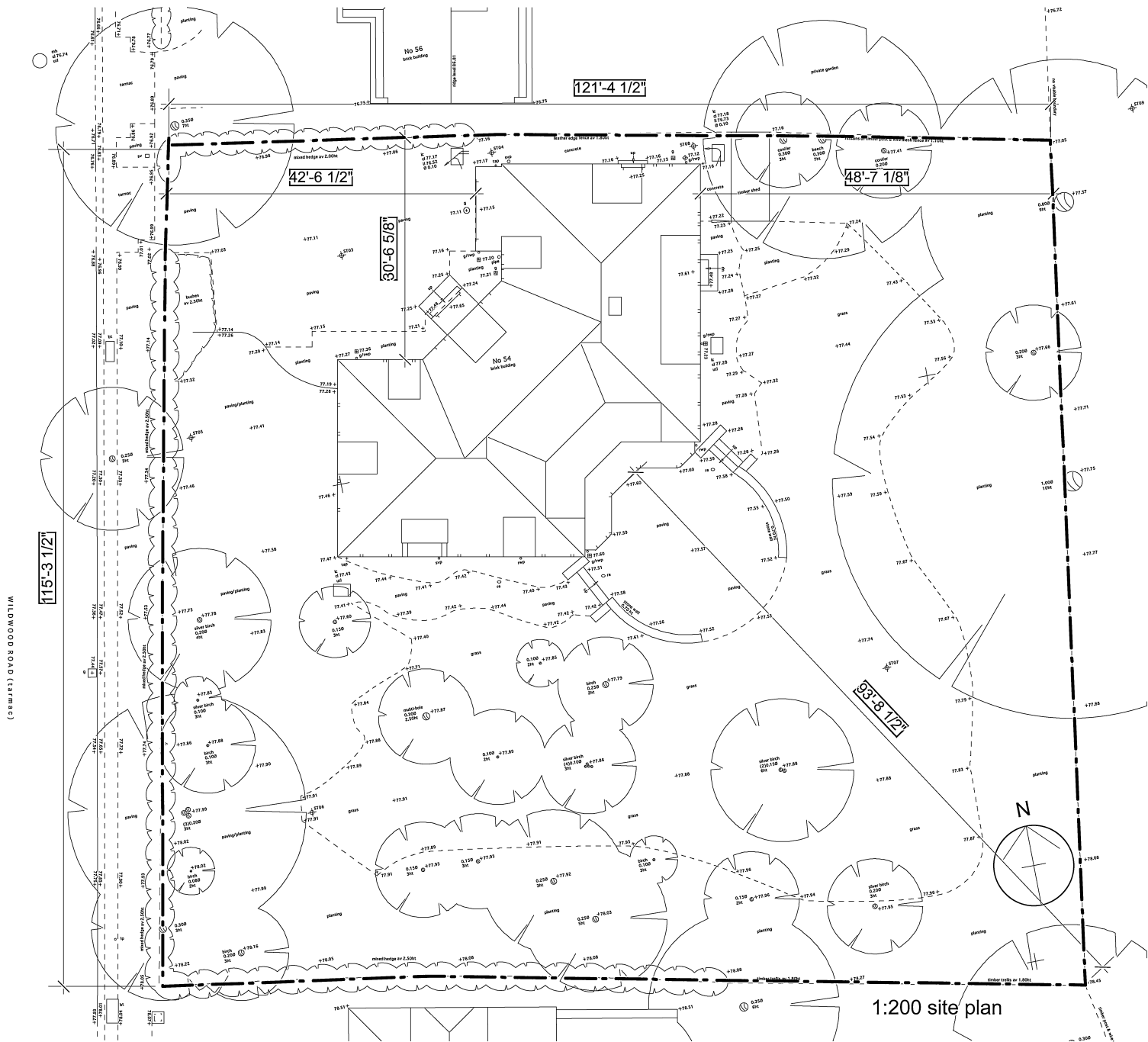




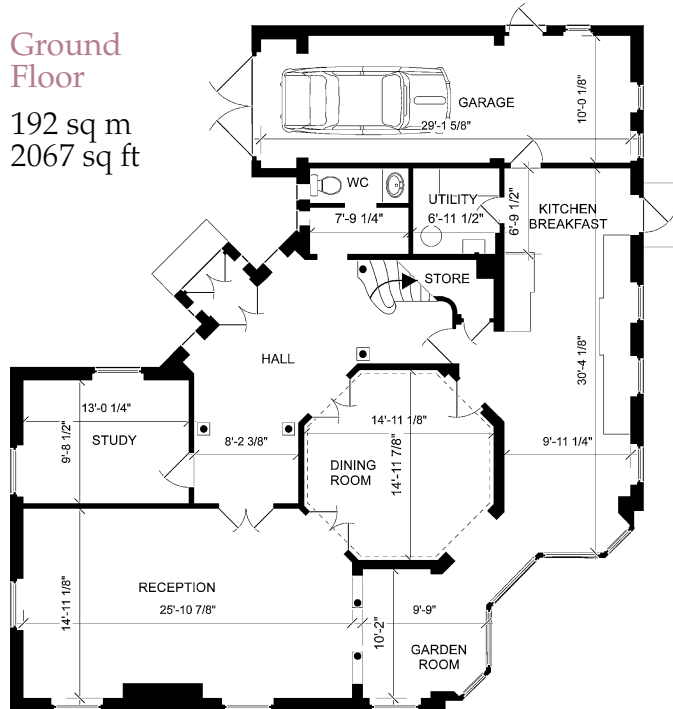
Wildwood Road | Hampstead Garden Suburb

Site Plan

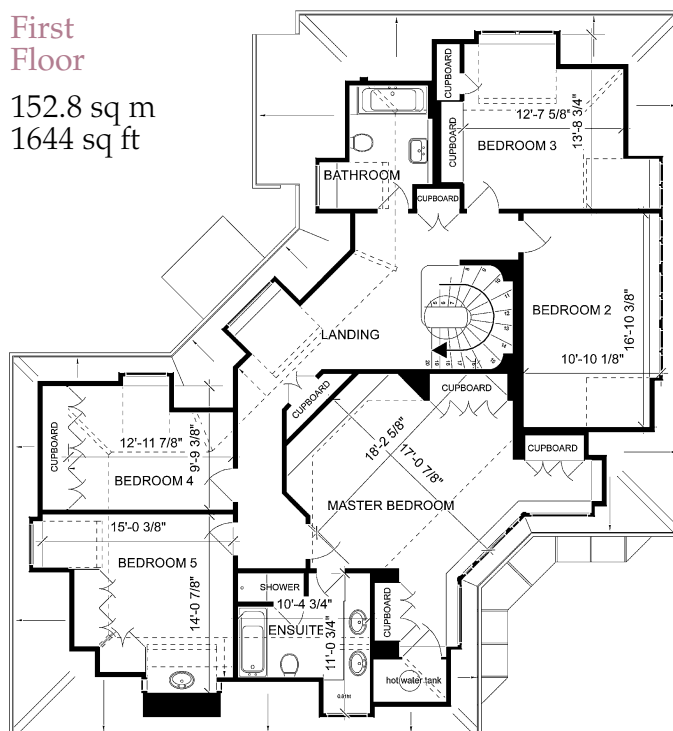


## EXISTING PLAN

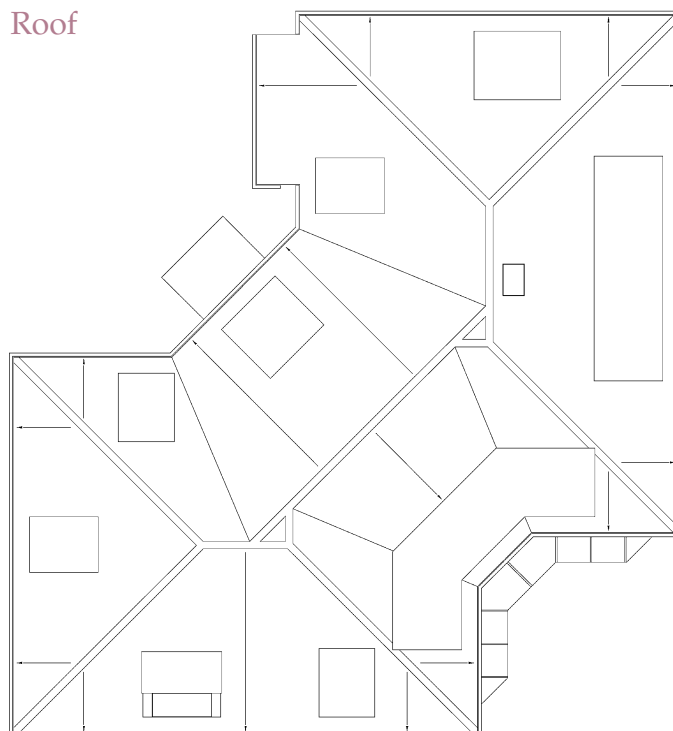
Ground Floor  
192 sq m  
2067 sq ft



First Floor  
152.8 sq m  
1644 sq ft

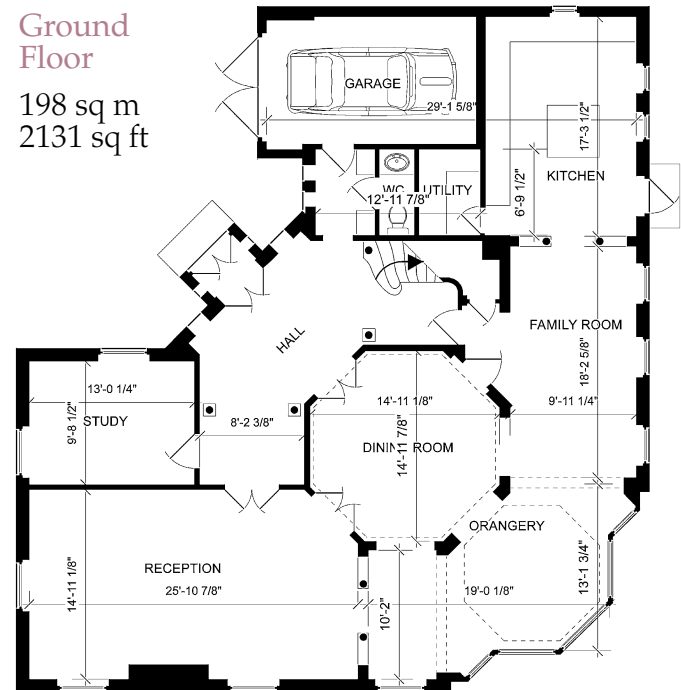


Roof

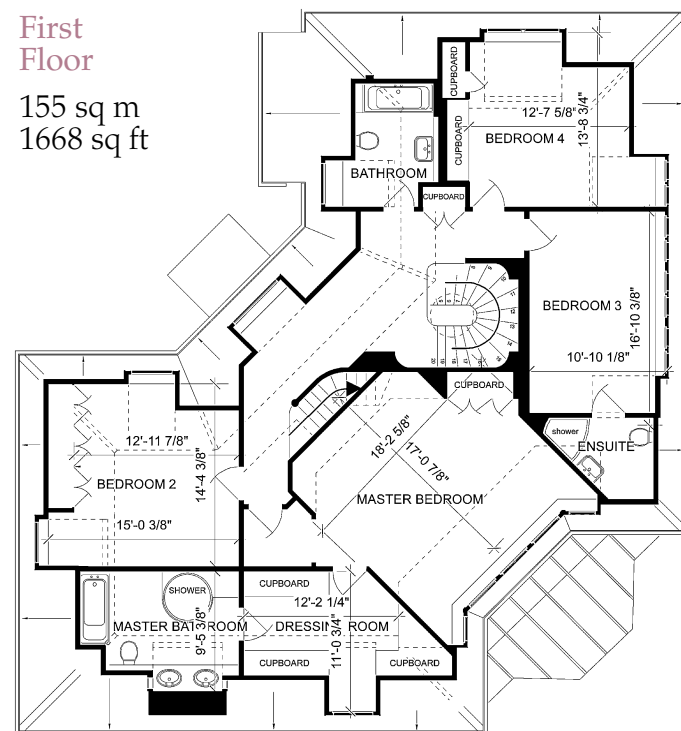


## CONSENTED PLAN

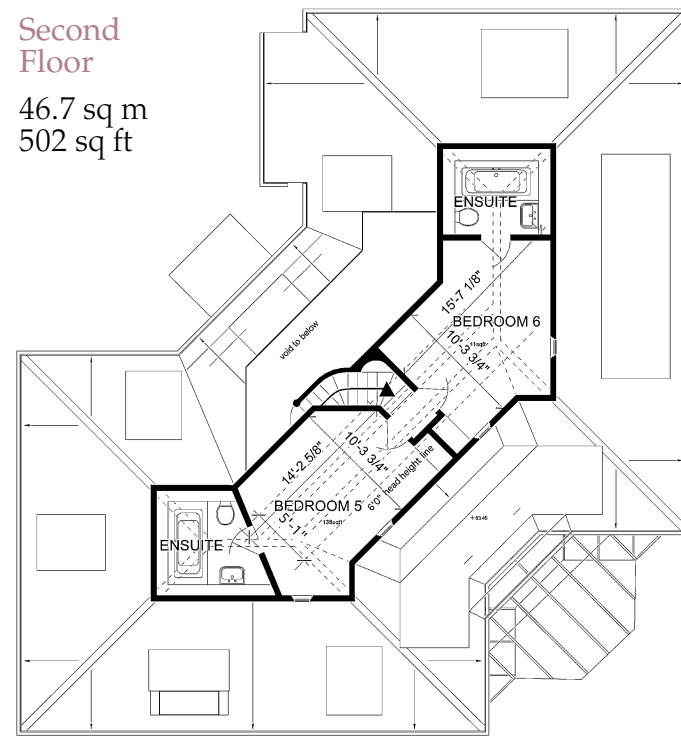
Ground Floor  
198 sq m  
2131 sq ft



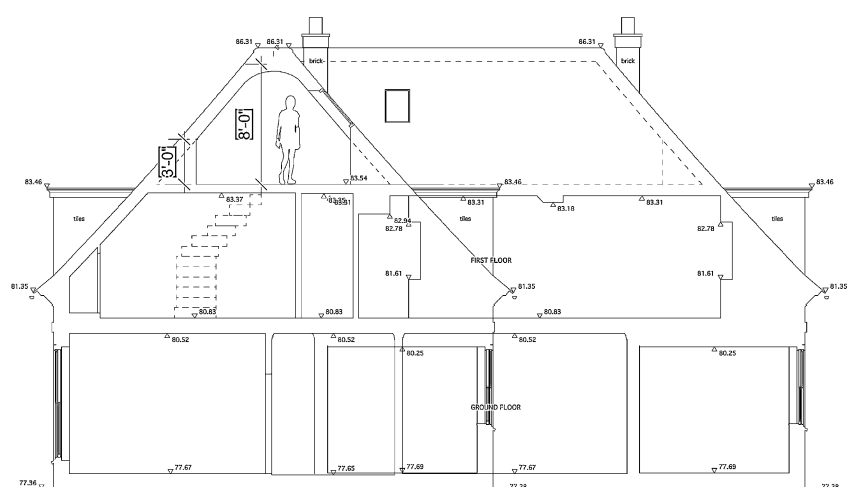
First Floor  
155 sq m  
1668 sq ft



Second Floor  
46.7 sq m  
502 sq ft



Indicative section showing new second floor



Existing Area  
3,711 Square Feet  
Planning Consent for  
4,301 Square Feet