



## WENTWORTH ROAD NW11 - PHASE 2

A stunning new development of four architect designed townhouses  
built by Fitzroy, a market leader in luxury homes.



## WENTWORTH ROAD NW11 PHASE 2

Each house offers approximately 2,000 sq ft of bright and well designed accommodation including large family room and kitchens with bi-folding doors leading to the terraces.



Wentworth Place is set in a quiet road close to the shops and restaurants at both Temple Fortune and Golders Green and within a short walk of Hampstead Extension.



Photographs shown are from Phase 1, for illustrative purposes only.

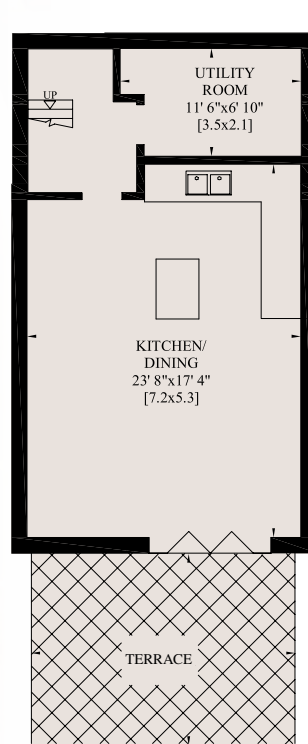




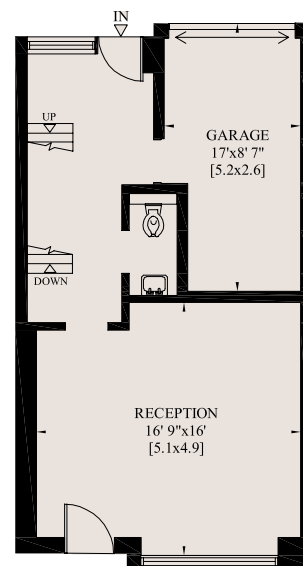


- Master Bedrooms with Luxury Ensuite Bathroom and Walk In Shower
- Two further Bedrooms with Fitted Wardrobes (One with Ensuite Bathroom)
- Study/Bedroom 4
- Intervari Fully Equipped Kitchen with Centre Island and Neff Appliances
- Fitted Utility Rooms with Neff Appliances
- Full Height Veneer Doors
- Guest Cloakrooms
- Garage
- Comfort Cooling to Principal Rooms
- Under Floor Heating throughout
- Solar Panels for Green Eco Energy
- Bi-Folding Doors to Courtyard
- Hardwood Floors and Stairs
- 10 Year BLP Guarantee

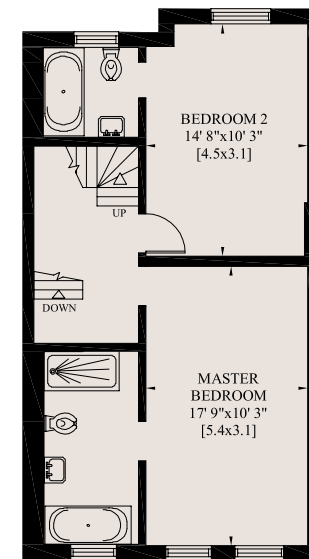




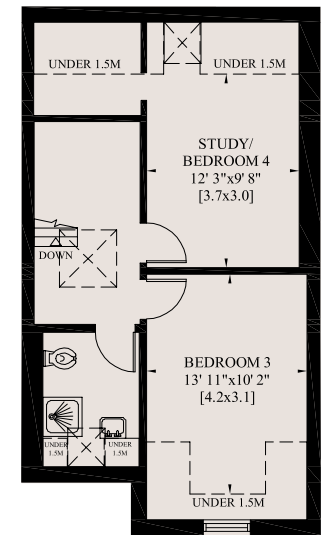
LOWER GROUND FLOOR



GROUND FLOOR



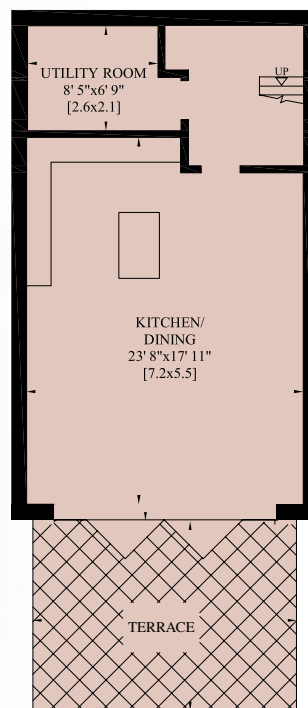
FIRST FLOOR



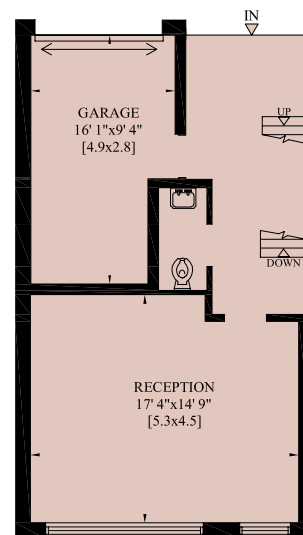
SECOND FLOOR



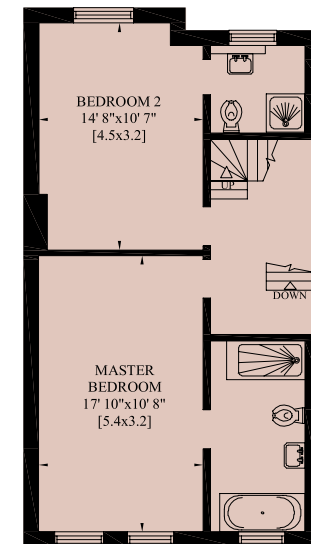
12 WENTWORTH PLACE  
GROSS INTERNAL AREA  
200 SQUARE METRES - 2,156 SQUARE FEET



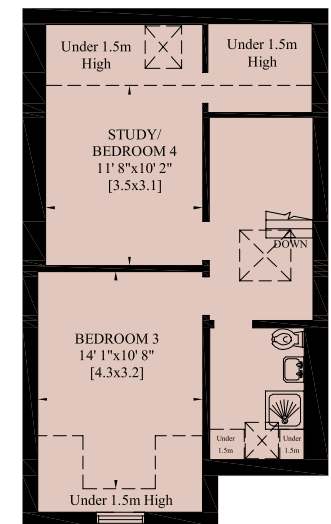
LOWER GROUND FLOOR



GROUND FLOOR



FIRST FLOOR

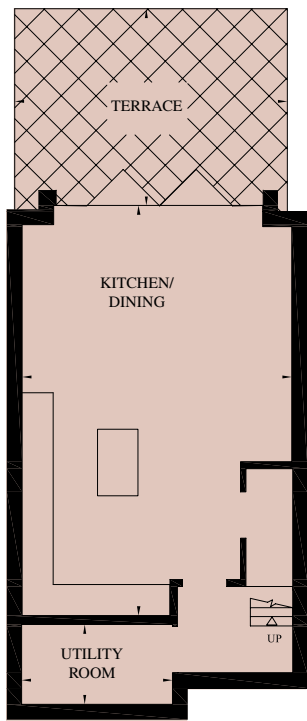


SECOND FLOOR

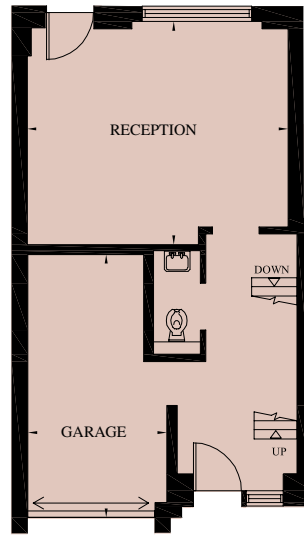


12A WENTWORTH PLACE  
GROSS INTERNAL AREA  
203 SQUARE METRES - 2,190 SQUARE FEET

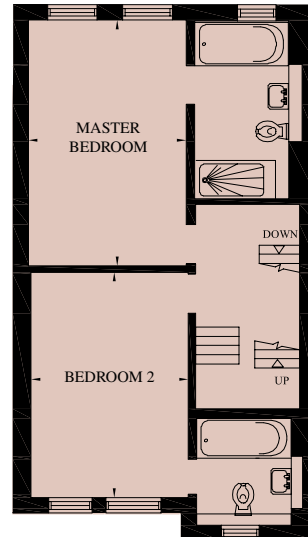
## 12B WENTWORTH PLACE



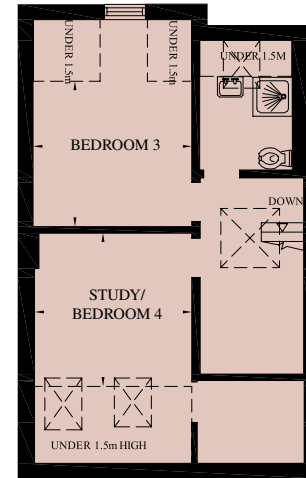
GARDEN FLOOR



GROUND FLOOR



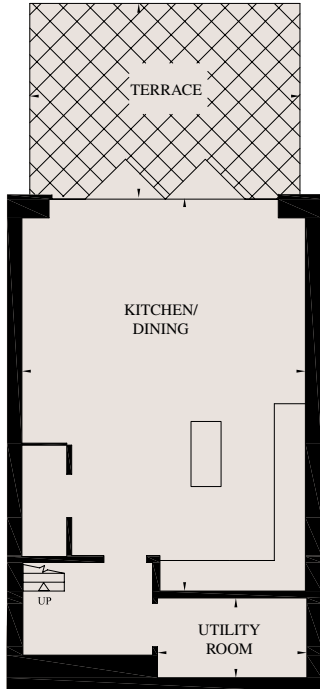
FIRST FLOOR



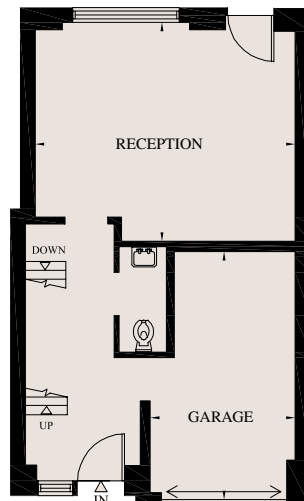
SECOND FLOOR



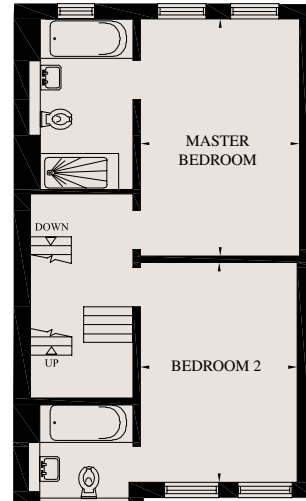
## 12C WENTWORTH PLACE



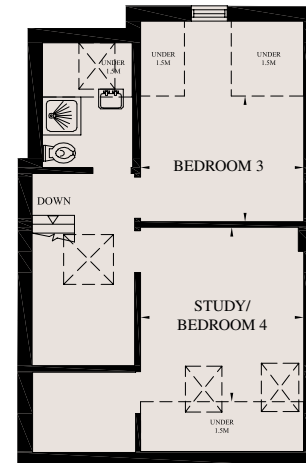
GARDEN FLOOR



GROUND FLOOR



FIRST FLOOR



SECOND FLOOR



A NEW DEVELOPMENT BY



Misrepresentation Act 1967. This brochure and the descriptions and measurements herein do not constitute representation and whilst every effort has been made to ensure accuracy, this cannot be guaranteed. 273594

Photography and Brochure by (thecapitalgroup) Tel: 020-8671 5448

Floorplans shown are from Phase 1 and for indication purposes only.