



West Heath Place

www.westheathplace.com



West Heath Place

London NW11

Luxury New Apartments For North West London

Located in the heart of London's scenic North West district, West Heath Place offers the highly desirable combination of modern urban living with beautiful green open spaces.

With its 50 luxury apartments and one unique cottage, West Heath Place provides the perfect reason to make this prime area of London your home.



Modern, tasteful and convenient, West Heath Place brings luxury living to a beautiful corner of London, and invites you to call it home.



Golders Hill Park

www.westheathplace.com



4

www.westheathplace.com





An apartment view

The Development

West Heath Place offers everything you want for modern living, and more. The developer, Albany Homes International, has ensured luxury and security go hand in hand, making the most of the beautiful surroundings, and compromising nothing in creating a fantastic place to live:

- › The concierge and entrance hall enhance your welcome.
- › All apartments boast terraces or balconies, many with panoramic views of the London skyline and some enjoy private terraces.
- › Residents enjoy access to the on site gym and secure underground parking.
- › Light and spacious surroundings make for the perfect haven from a bustling metropolis.
- › A short walk from Golders Green Station (Northern Line). Immediate access to London's bus links and moments from the beautiful open spaces of Golders Hill Park and Hampstead Heath.

West Heath Place is not only a beautifully luxurious environment, but has all the practical attention to detail you want from a new home.



West Heath Place

London NW11

www.westheathplace.com

6



Golders Hill Park

The Area

Great apartments rely on great locations, and West Heath Place offers everything you expect from London living.

From West Heath Place you're never far away from central London with all the entertainment, social, cultural and leisure activities this includes. Closer to home, the shops and restaurants of Hampstead Village and Golders Green provide a vibrant community right on your doorstep.

First-class transport links ensure West Heath Place is perfectly located for the commuter. With excellent access to the London Underground network, King's Cross St Pancras and Marylebone train

stations are under 15 minutes away by tube. The North Circular (A406), M1 and M25 motorways are close by and provide direct access to the country's motorway networks, whilst international flights from Heathrow Airport are only a 35 minute drive away.

Away from the urban metropolis, West Heath Place is within a stone's throw of Golders Hill Park and the beautiful green open spaces of Hampstead Heath. Truly offering the best of both worlds, these apartments effortlessly combine contemporary living and beautiful cosmopolitan surroundings.



West Heath Place

London NW11



Kenwood House



West Heath Place

London NW11



8



The Specification

Kitchens

- › Designer kitchens with luxury Poggenpohl custom made cabinetry.
- › High quality appliances by Miele, to include an integrated dishwasher, fridge/freezer, washer/dryer (in some kitchens), oven and microwave.
- › Apartments with a utility room will feature a separate washing machine and tumble dryer.
- › Granite worktops with glass splash back.
- › 30 x 60 cm Astri Dubhe porcelain floor tiles.

Bathrooms & En-Suites

- › Sanitary ware from Villeroy and Boch range with sleek Vado polished chrome fittings to all bathrooms.
- › Duravit baths with mirrored bath panels, some of which feature a stone top.
- › Wall hung wood veneer vanities with a stone top to all master bathrooms.
- › Walk in wet rooms with elegant clear glass screens.
- › Stylish wall mounted towel radiators.
- › Aqua televisions to one bathroom in each apartment.

Internal Finishes

- › Indulgent walnut or white stained oak engineered flooring to entrance hall and living rooms.
- › Over-height walnut veneer doors in softwood painted frames with brushed chrome door hardware.
- › Custom made coving, architraves and skirting.
- › Luxurious Astir Altair matt porcelain wall and floor tiles to all bathrooms.
- › Harrow range beige carpet to all bedrooms.
- › Built in custom wardrobes to master bedrooms and bedroom 2. Fully fitted walk in wardrobes provided to dressing rooms in selected apartments.

Heating & Cooling

- › Under-floor heating throughout supplied by a gas fired system boiler.
- › Comfort cooling provided to the master bedroom and living room of all 3 bedroom apartments and larger.

Lighting

- › Recessed down lighters, of which 25% are low energy fittings.
- › Dimmer switches in the living rooms and bedrooms.
- › Master bedroom, living room, hall and bathroom are pre-wired for wall lights.
- › 5 amp sockets are provided in master bedrooms and living rooms.
- › Brushed chrome sockets and light switches.
- › Mood lighting provided to master bedrooms and living rooms in apartments 19, 25, 38, 42, 46 and 47.

Extract Ventilation

- › Xpelair ventilation in the bathrooms, kitchens and utility rooms.

Media & Communications

- › Cat 5 wiring infrastructure to all reception rooms and bedrooms.
- › Sky Plus in living rooms in all 2 bedroom apartments and in both living rooms and master bedrooms in all 3 bedroom apartments and larger.
- › Touch panels controlling the heating, cooling, blinds and lighting are provided in the master bedroom, living room, dining room, kitchen and bedroom 2. (Apartments 46, 47 & 48 only.)
- › Prewired for wall mounted TV's in the living room and master bedroom.
- › Pre-wired for sound system in the kitchen, living room, master bedroom and bedroom 2.

Security & Safety

- › Concierge in elegant main lobby.
- › Individual video door entry units linked to concierge.
- › CCTV cameras throughout the building.
- › Apartments are pre-wired for intruder alarm.
- › Smoke detectors in each apartment.
- › Underground parking secured by an automatic gate system.
- › Refuse chutes from all floors.
- › Storage rooms available at additional cost.

Leisure Facilities

- › Fully equipped gym for resident's sole private use.
- › Communal garden.



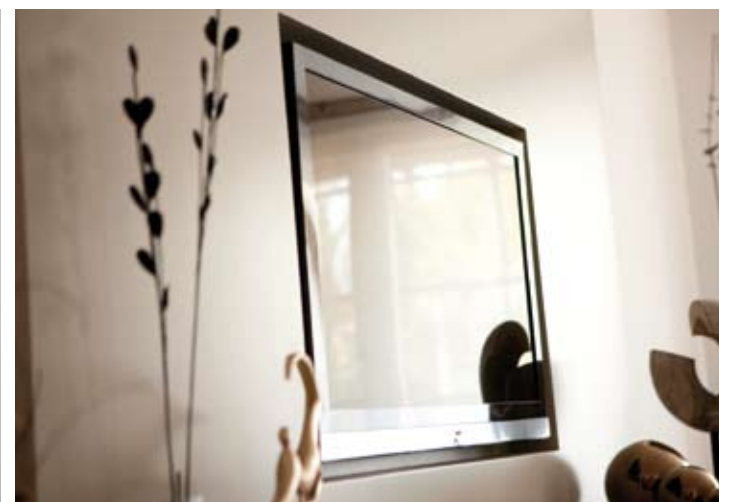
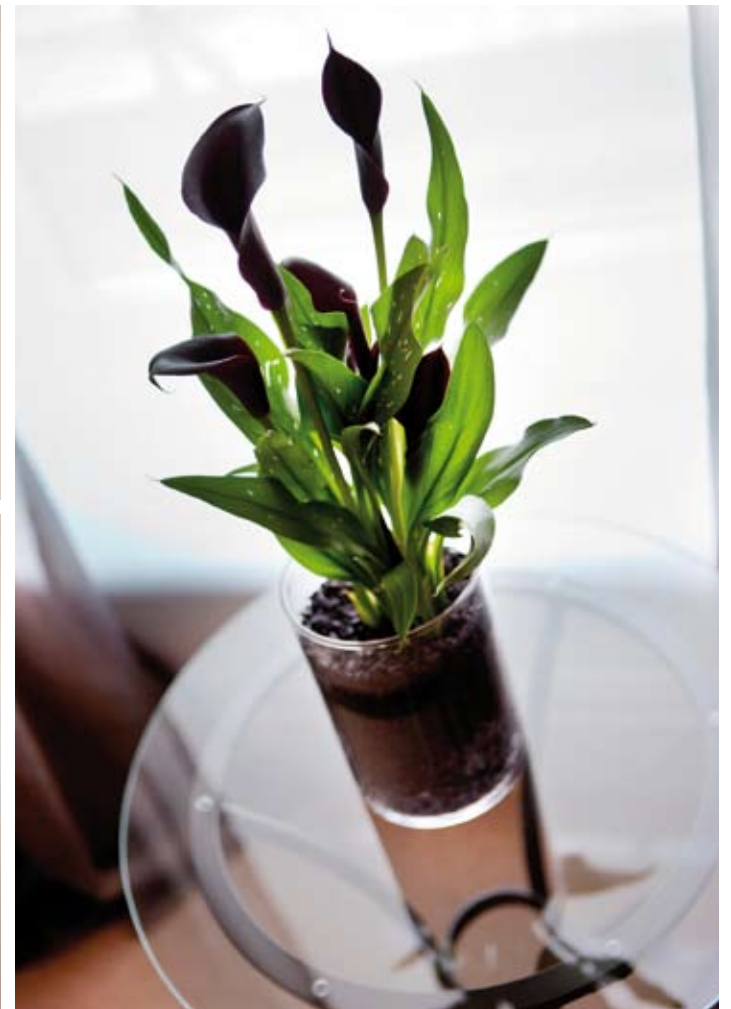
West Heath Place

London NW11

10









West Heath Place

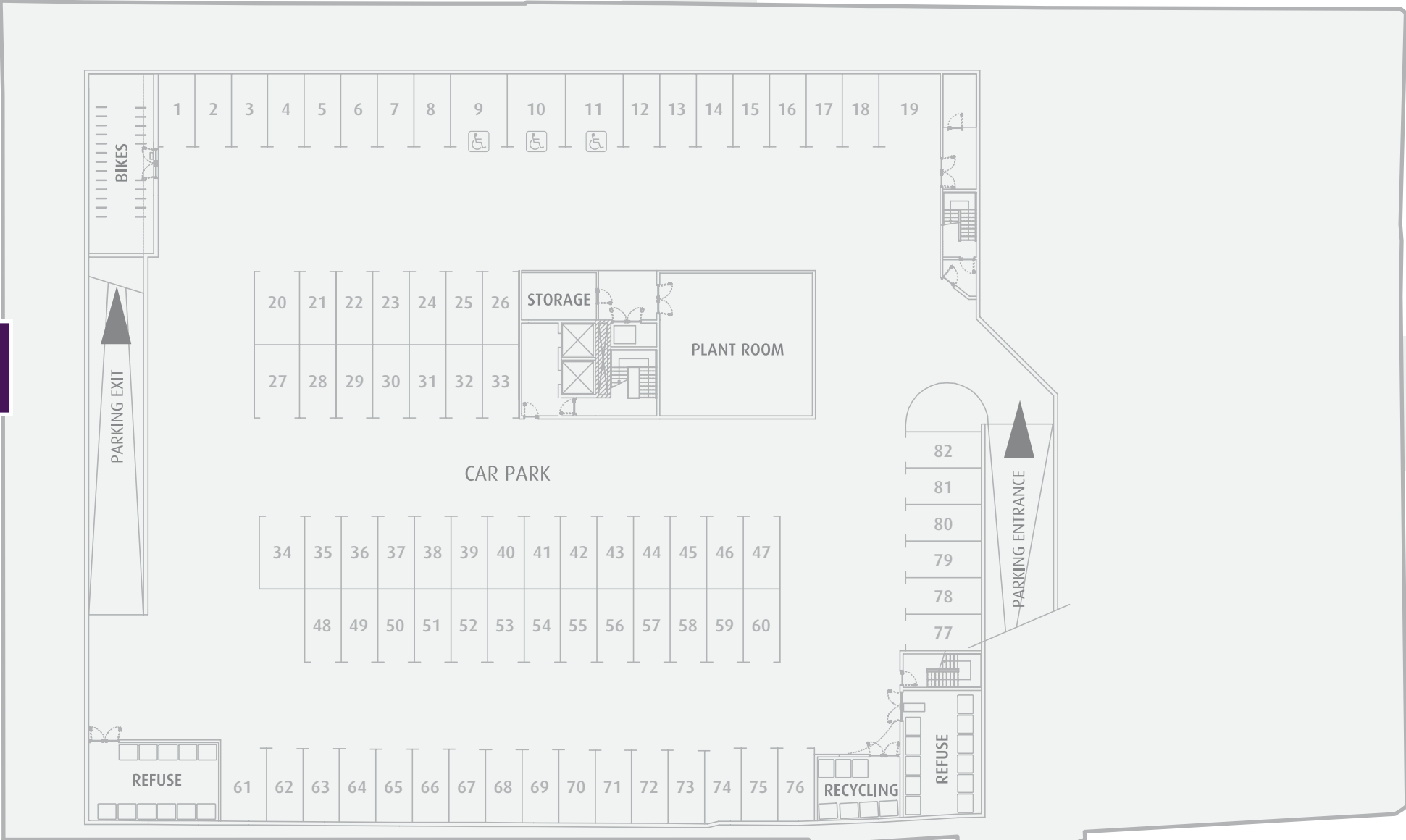
London NW11

The Plans

Basement (Car Park)



HODFORD ROAD



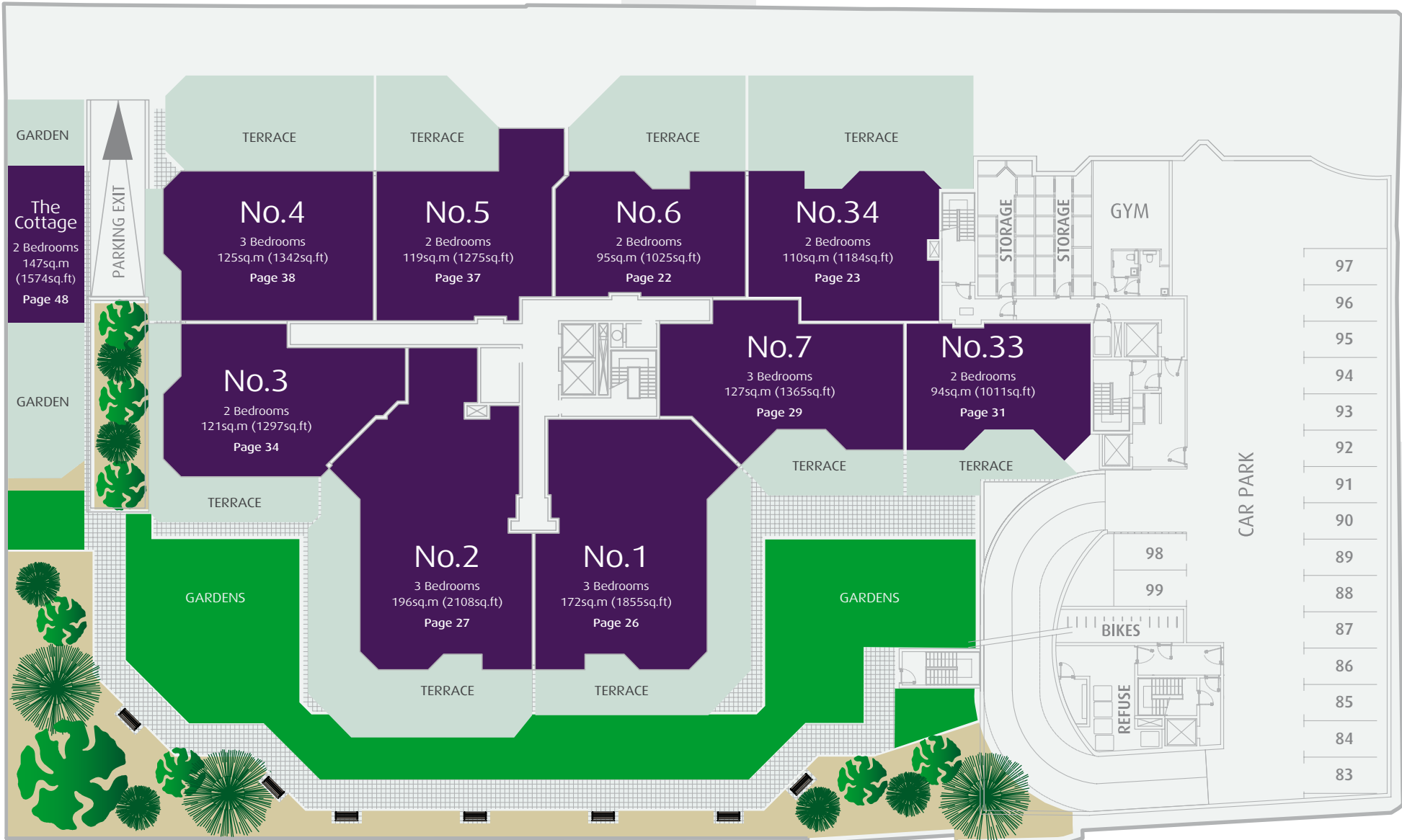
FINCHLEY ROAD

SITE BORDER



Ground Floor

HODFORD ROAD



SITE BORDER

First Floor



HODFORD ROAD

ENTRANCE

TERRACE

TERRACE

The Cottage
2 Bedrooms
147sq.m
(1574sq.ft)
Page 48

No.15
2 Bedrooms
90sq.m (972sq.ft)
Page 39

No.16
2 Bedrooms
115sq.m (1238sq.ft)
Page 24

No.8
2 Bedrooms
95sq.m (1025sq.ft)
Page 22

No.9
2 Bedrooms
94sq.m (1011sq.ft)
Page 25

No.49
2 Bedrooms
120sq.m (1284sq.ft)
Page 43

No.50
2 Bedrooms
120sq.m (1284sq.ft)
Page 44

16

No.14
2 Bedrooms
119sq.m (1275sq.ft)
Page 36

No.11
2 Bedrooms
117sq.m (1262sq.ft)
Page 28

No.10
2 Bedrooms
94sq.m (1011sq.ft)
Page 32

No.12
3 Bedrooms
191sq.m (2056sq.ft)

No.13
3 Bedrooms
172sq.m (1855sq.ft)
Page 26

FINCHLEY ROAD

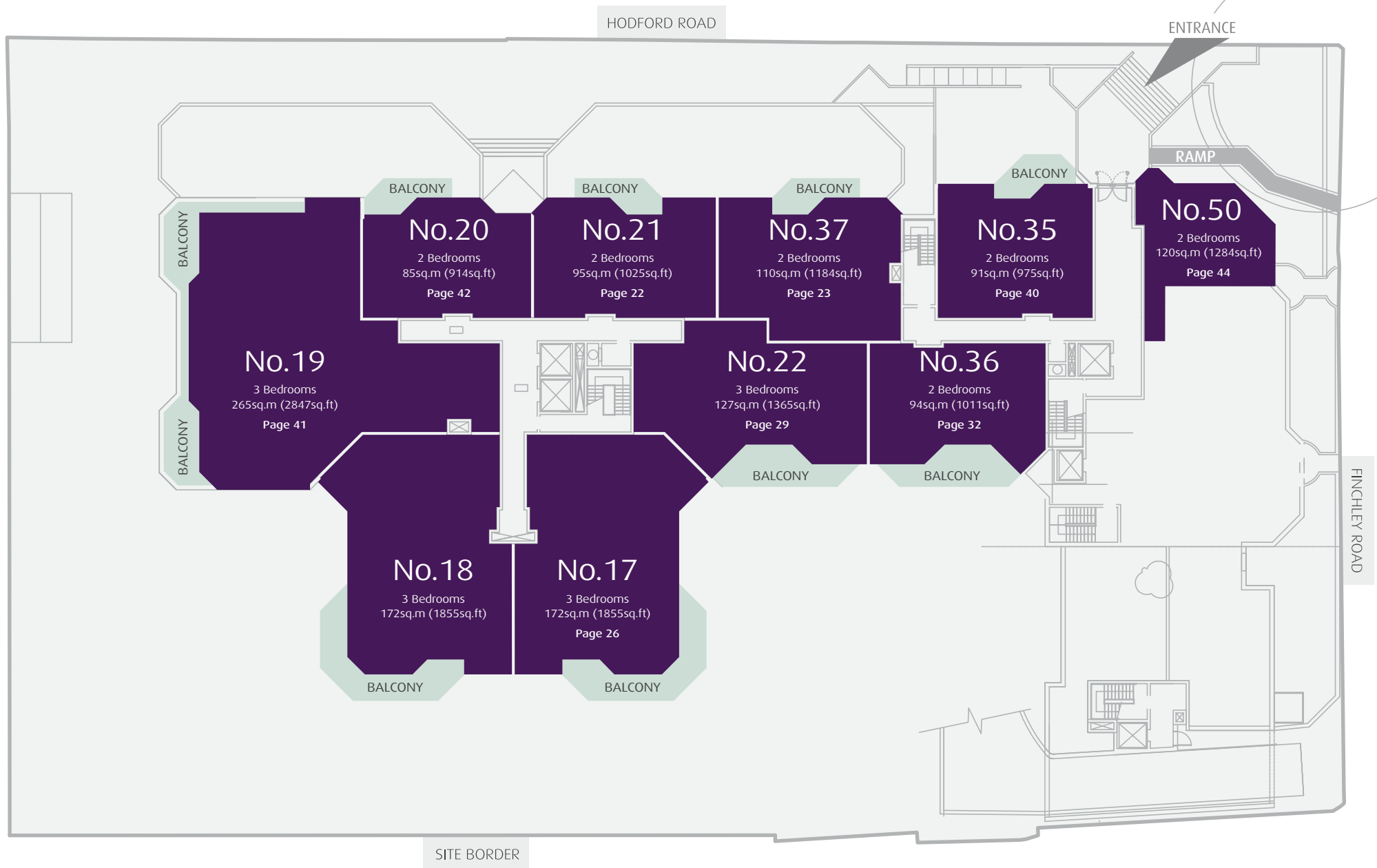
ENTRANCE
(CAR)

SITE BORDER





Second Floor



Third Floor



HODFORD ROAD



18

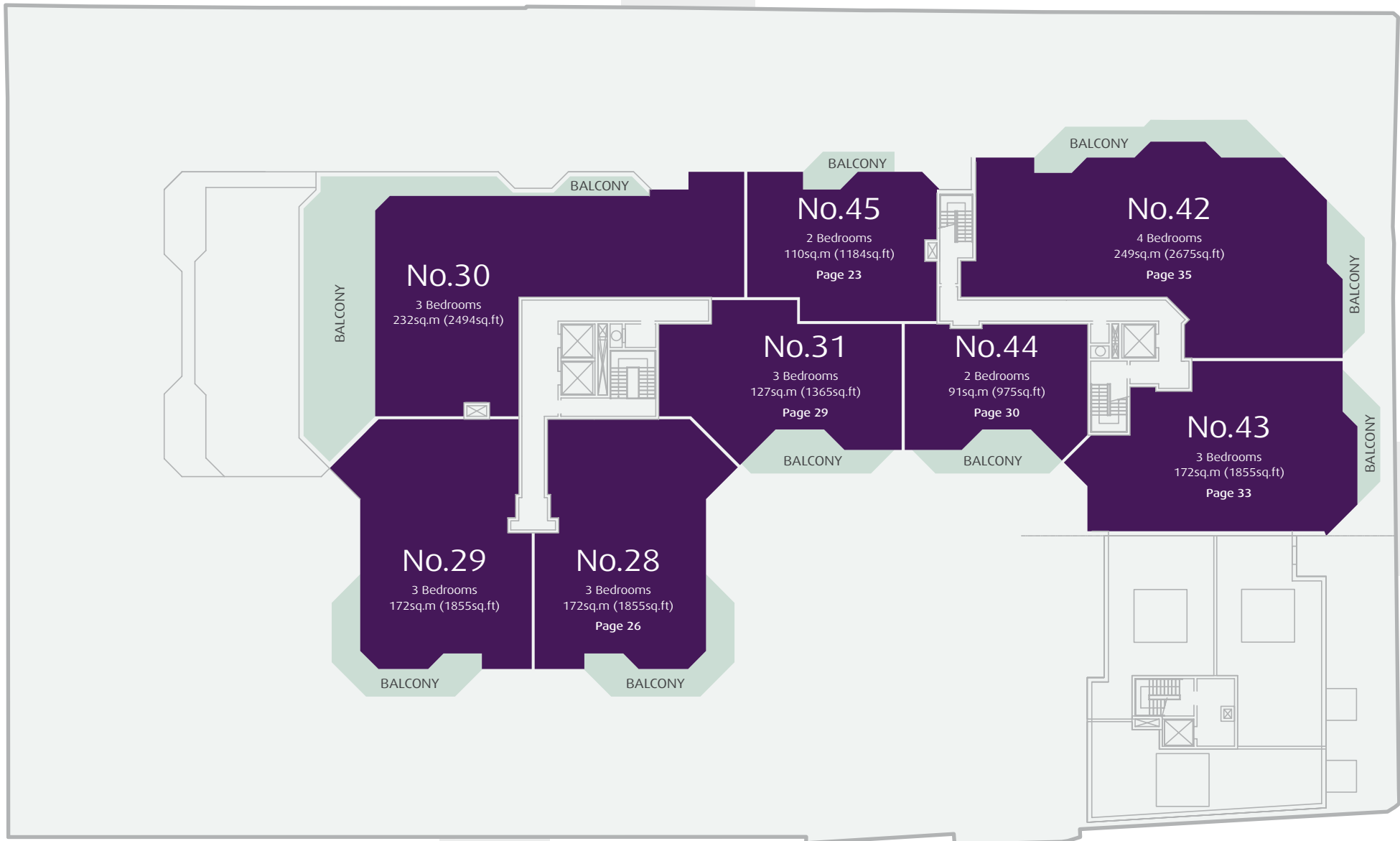
SITE BORDER

FINCHLEY ROAD



Fourth Floor

HODFORD ROAD



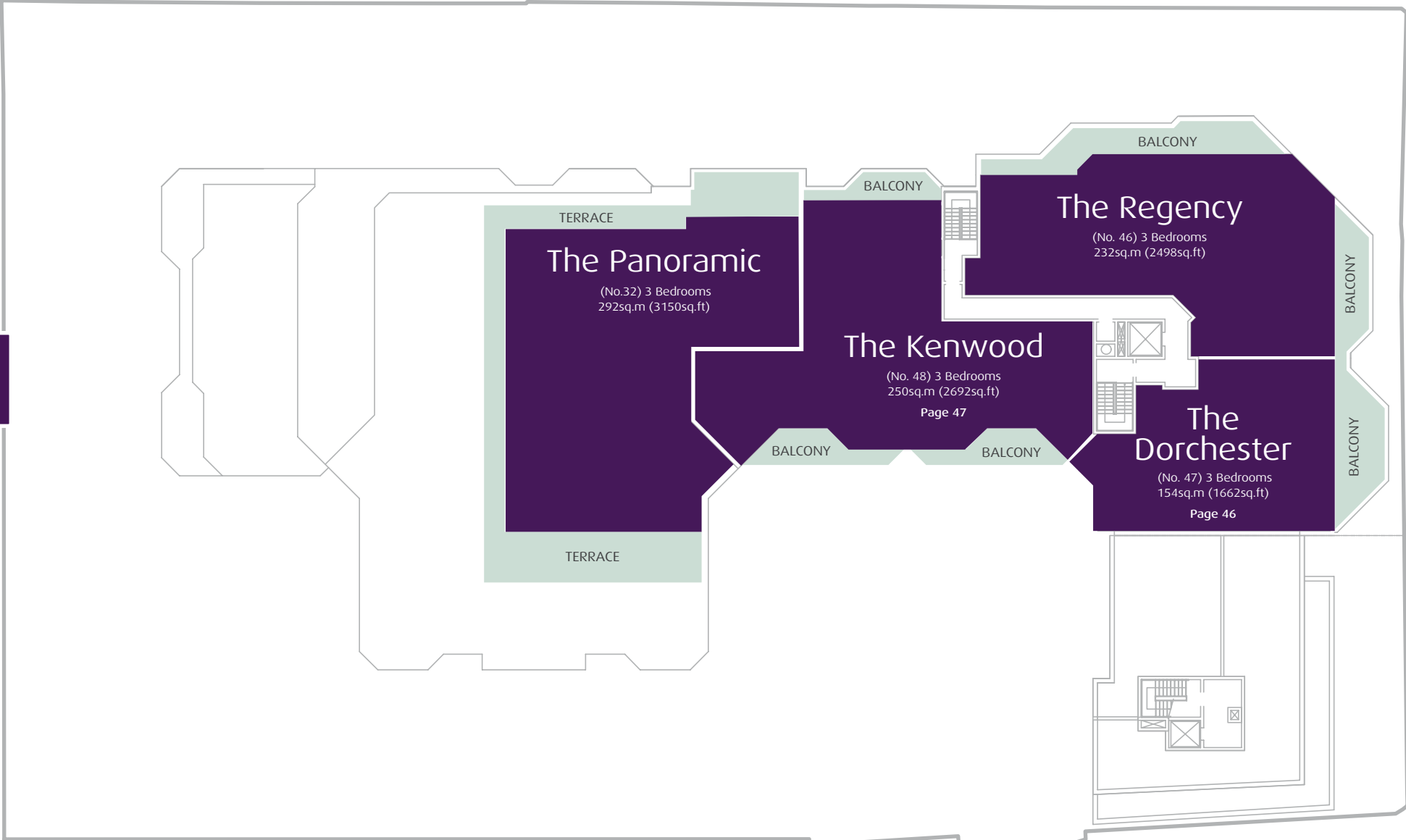
SITE BORDER

FINCHLEY ROAD

Fifth Floor



HODFORD ROAD



FINCHLEY ROAD

SITE BORDER



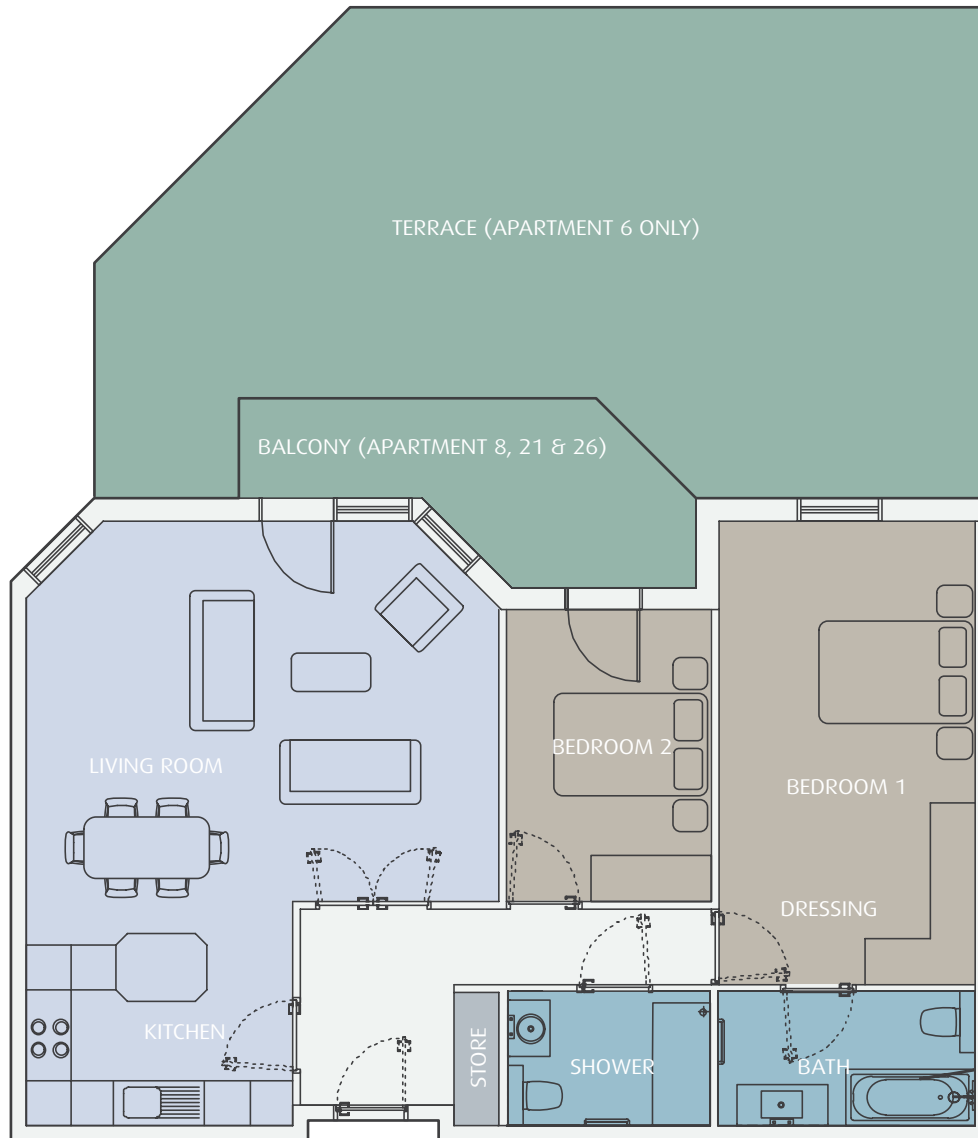
West Heath Place

London NW11

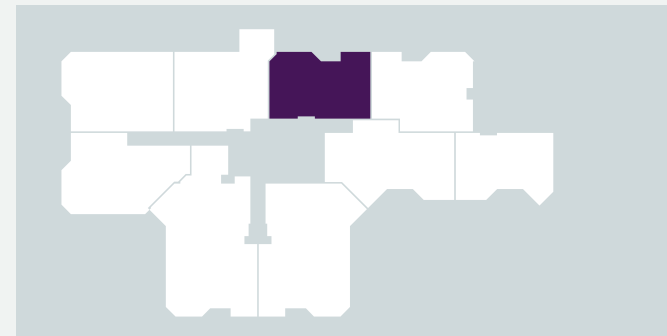
The Apartments

(Floor Plans)

Apartments: 6, 8, 21, 26



- GROUND FLOOR
- > APARTMENT 6
- FIRST FLOOR
- > APARTMENT 8
- SECOND FLOOR
- > APARTMENT 21
- THIRD FLOOR
- > APARTMENT 26
- FOURTH FLOOR
- > NA
- FIFTH FLOOR
- > NA



INTERIOR AREA: 95 sq.m (1025 sq.ft)

- > LIVING ROOM 6.25m x 5.44m (20' 6" x 18' 0")
- > KITCHEN 3.52m x 2.55m (11' 7" x 8' 3")
- > BEDROOM 1 6.12m x 3.38m (20' 1" x 11' 1")
- > BEDROOM 2 3.84m x 2.71m (12' 7" x 8' 11")
- > BALCONY (AREA) 11 sq.m (118 sq.ft)
- > TERRACE (APT 6) 72 sq.m (775 sq.ft)

Particulars contained in this brochure are for general information only and do not constitute any part of an offer or a contract. All statements contained herein are made without responsibility on the part of the agents or the seller and are not to be relied upon as a statement or representations of fact. Intending purchasers or lessees must satisfy themselves, by inspection, measurement or otherwise, as to the correctness of each of the statements or dimensions contained in these particulars. All dimensions given are fair size, not maximum measurements. Interior images are from the show flat. Computer generated images are only intended to give an impression for this development. Please contact a sales representative for further details.

GROUND FLOOR

> APARTMENT 34

FIRST FLOOR

> NA

SECOND FLOOR

> APARTMENT 37

THIRD FLOOR

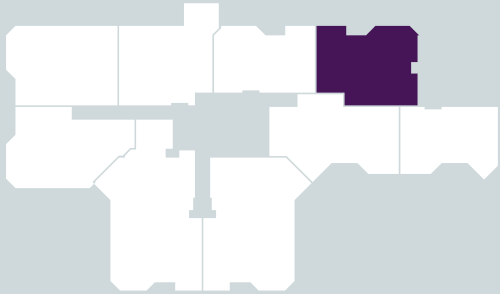
> APARTMENT 41

FOURTH FLOOR

> APARTMENT 45

FIFTH FLOOR

> NA



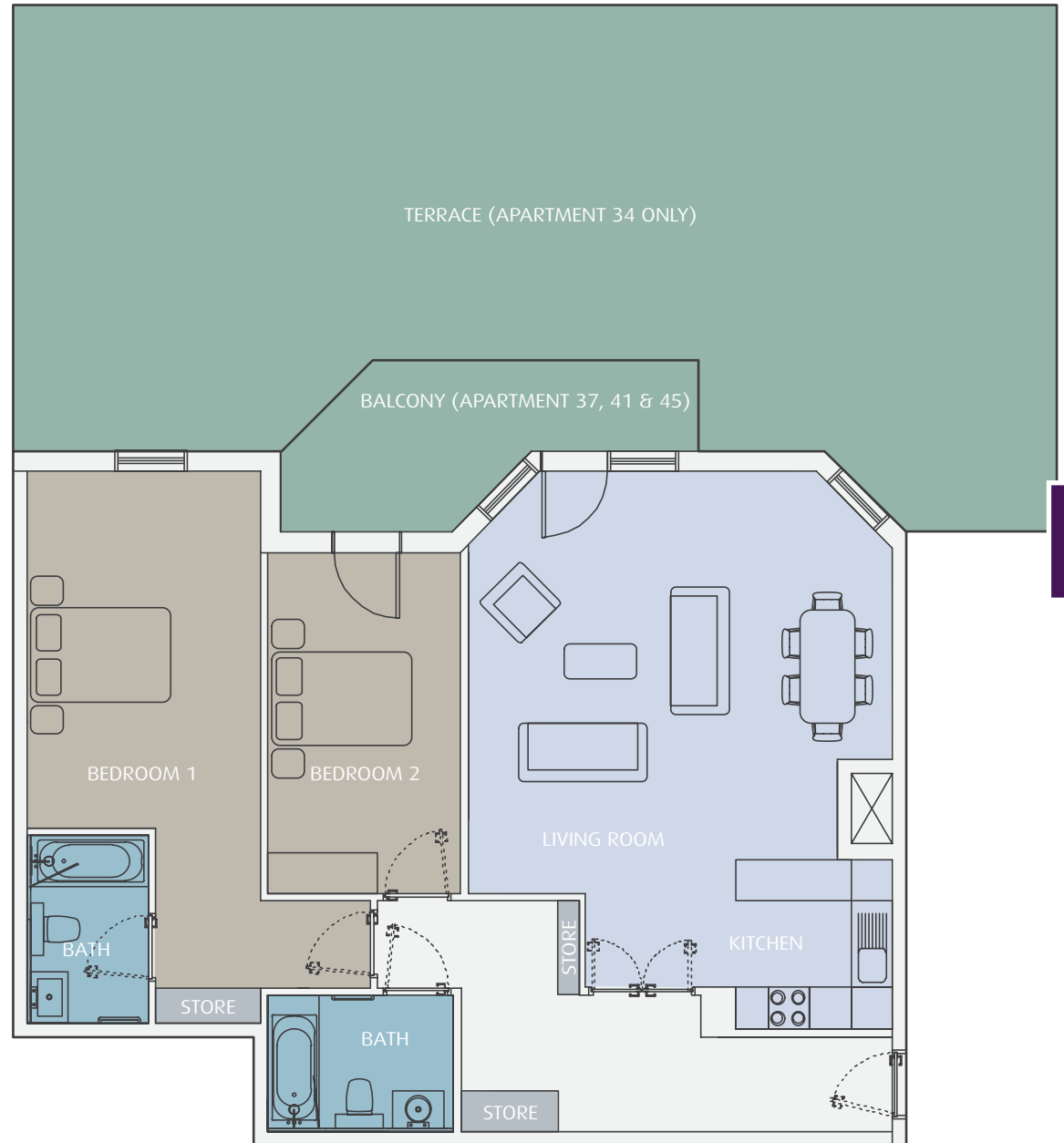
INTERIOR AREA: 110 sq.m (1184 sq.ft)

- > LIVING ROOM 7.47m x 6.14m (24' 6" x 20' 2")
- > KITCHEN 2.40m x 2.45m (8' 1" x 7' 10")
- > BEDROOM 1 7.39m x 3.38m (24' 3" x 11' 1")
- > BEDROOM 2 4.94m x 2.80m (16' 3" x 9' 2")
- > BALCONY (AREA) 11 sq.m (118 sq.ft)
- > TERRACE (APT 30) 100 sq.m (1,076 sq.ft)

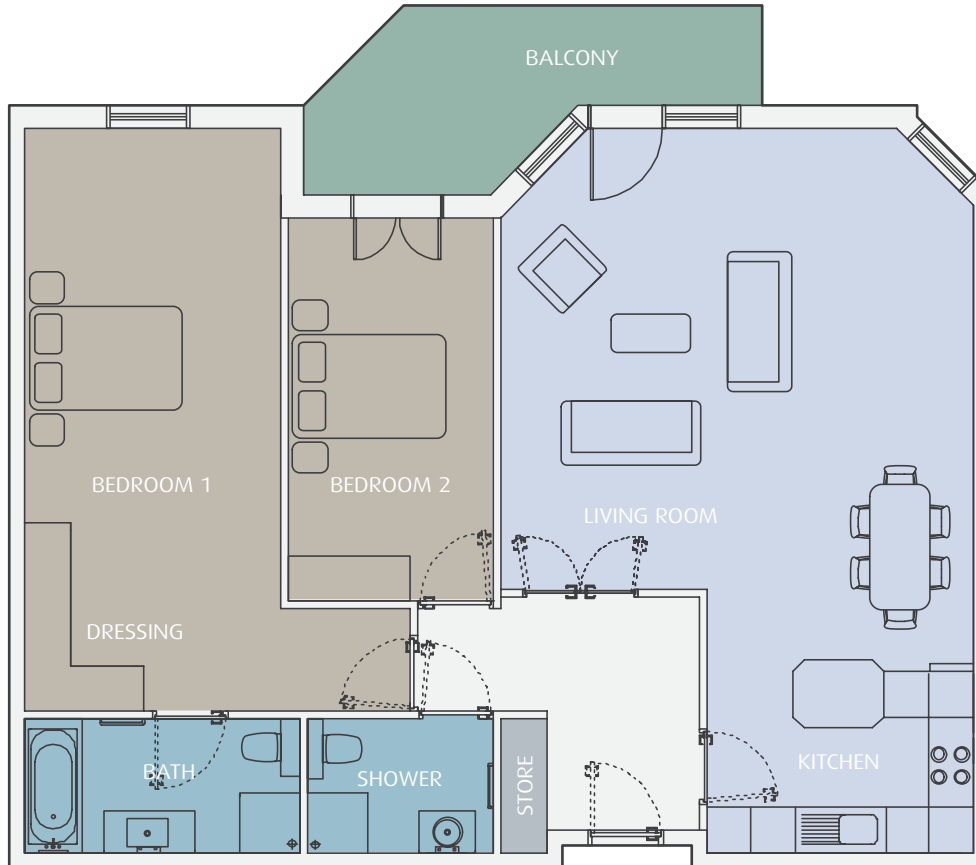
Particulars contained in this brochure are for general information only and do not constitute any part of an offer or a contract. All statements contained herein are made without responsibility on the part of the agents or the seller and are not to be relied upon as a statement or representations of fact. Intending purchasers or lessees must satisfy themselves, by inspection, measurement or otherwise, as to the correctness of each of the statements or dimensions contained in these particulars. All dimensions given are fair size, not maximum measurements. Interior images are from the show flat. Computer generated images are only intended to give an impression for this development. Please contact a sales representative for further details.



Apartments: 34, 37, 41, 45



Apartment: 16



GROUND FLOOR

> NA

FIRST FLOOR

> **APARTMENT 16**

SECOND FLOOR

> NA

THIRD FLOOR

> NA

FOURTH FLOOR

> NA

FIFTH FLOOR

> NA



INTERIOR AREA: 115 sq.m (1238 sq.ft)

- > LIVING ROOM 7.06m x 6.25m (23' 2" x 20' 6")
- > KITCHEN 3.52m x 2.52m (11' 7" x 8' 3")
- > BEDROOM 1 7.70m x 3.38m (25' 3" x 11' 1")
- > BEDROOM 2 5.07m x 2.71m (16' 8" x 8' 11")
- > BALCONY (AREA) 11 sq.m (118 sq.ft)

Particulars contained in this brochure are for general information only and do not constitute any part of an offer or a contract. All statements contained herein are made without responsibility on the part of the agents or the seller and are not to be relied upon as a statement or representations of fact. Intending purchasers or lessees must satisfy themselves, by inspection, measurement or otherwise, as to the correctness of each of the statements or dimensions contained in these particulars. All dimensions given are fair size, not maximum measurements. Interior images are from the show flat. Computer generated images are only intended to give an impression for this development. Please contact a sales representative for further details.

GROUND FLOOR

> NA

FIRST FLOOR

> APARTMENT 9

SECOND FLOOR

> NA

THIRD FLOOR

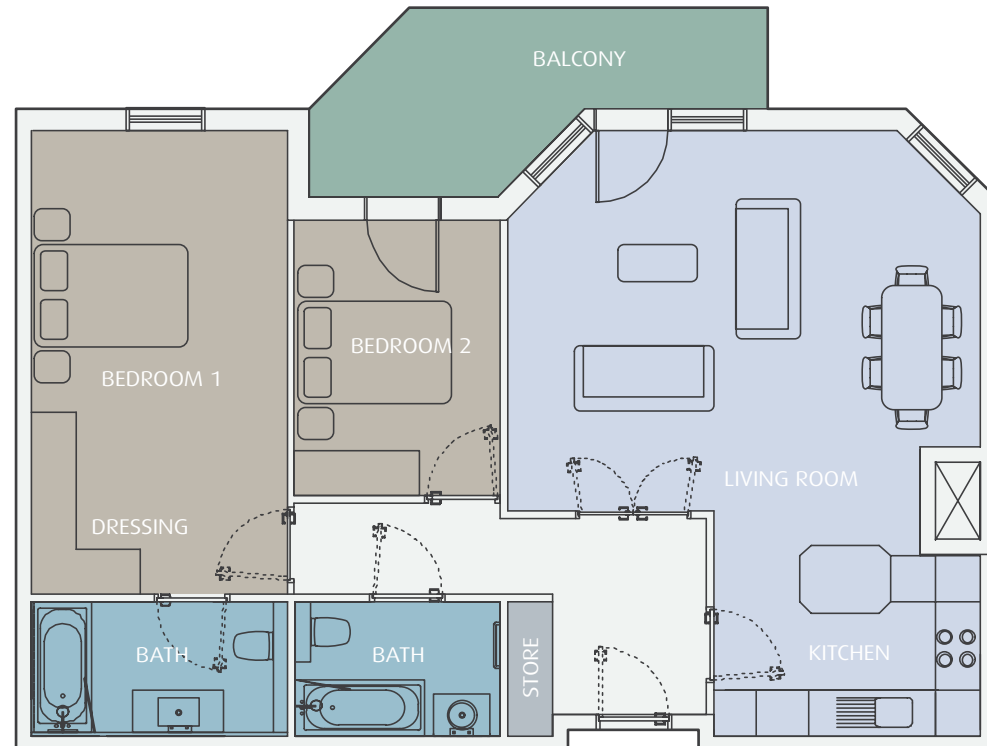
> NA

FOURTH FLOOR

> NA

FIFTH FLOOR

> NA

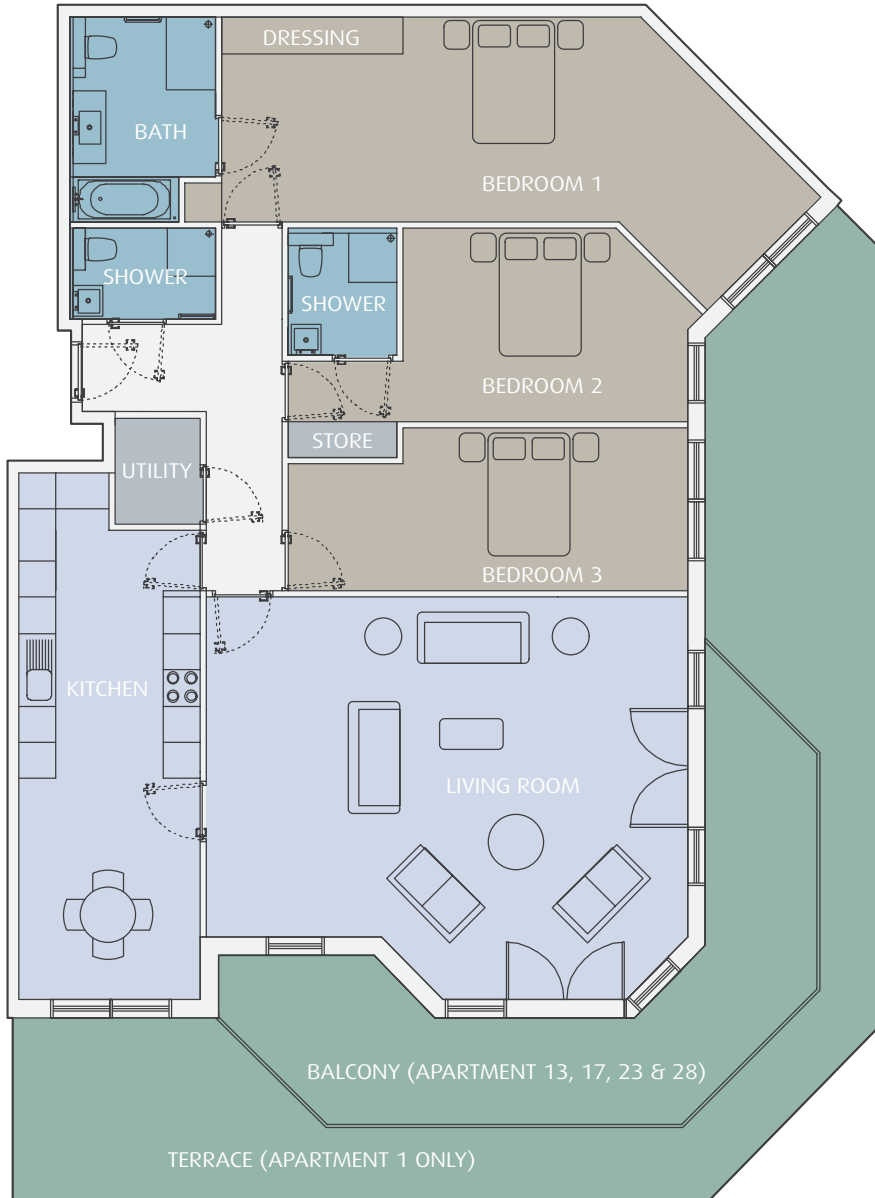


INTERIOR AREA: 94 sq.m (1011 sq.ft)

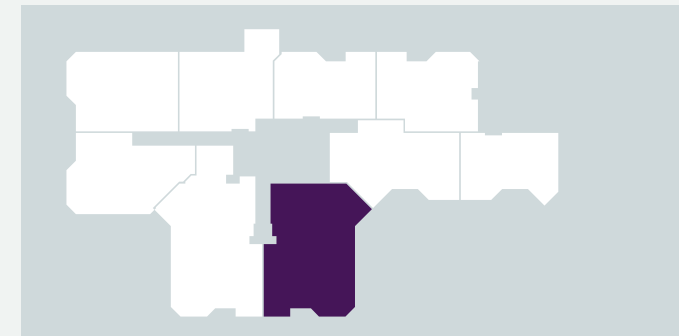
- > LIVING ROOM 6.25m x 5.47m (20' 6" x 18' 0")
- > KITCHEN 3.55m x 2.50m (11' 7" x 8' 3")
- > BEDROOM 1 6.12m x 3.38m (20' 1" x 11' 1")
- > BEDROOM 2 3.65m x 2.71m (12' 0" x 8' 11")
- > BALCONY (AREA) 11 sq.m (118 sq.ft)

Particulars contained in this brochure are for general information only and do not constitute any part of an offer or a contract. All statements contained herein are made without responsibility on the part of the agents or the seller and are not to be relied upon as a statement or representations of fact. Intending purchasers or lessees must satisfy themselves, by inspection, measurement or otherwise, as to the correctness of each of the statements or dimensions contained in these particulars. All dimensions given are fair size, not maximum measurements. Interior images are from the show flat. Computer generated images are only intended to give an impression for this development. Please contact a sales representative for further details.

Apartments: 1, 13, 17, 23, 28



- GROUND FLOOR
- > APARTMENT 1
- FIRST FLOOR
- > APARTMENT 13
- SECOND FLOOR
- > APARTMENT 17
- THIRD FLOOR
- > APARTMENT 23
- FOURTH FLOOR
- > APARTMENT 28
- FIFTH FLOOR
- > NA



INTERIOR AREA: 172 sq.m (1855 sq.ft)

- > LIVING ROOM 7.96m x 6.64m (26' 1" x 21' 10")
- > KITCHEN/DINING 8.71m x 3.00m (28' 7" x 9' 10")
- > BEDROOM 1 9.89m x 3.38m (32' 6" x 11' 1")
- > BEDROOM 2 6.60m x 3.20m (21' 8" x 10' 6")
- > BEDROOM 3 6.60m x 2.70m (21' 8" x 8' 10")
- > BALCONY (AREA) 28 sq.m (301 sq.ft)
- > TERRACE (APT 1) 79 sq.m (850 sq.ft)

Particulars contained in this brochure are for general information only and do not constitute any part of an offer or a contract. All statements contained herein are made without responsibility on the part of the agents or the seller and are not to be relied upon as a statement or representations of fact. Intending purchasers or lessees must satisfy themselves, by inspection, measurement or otherwise, as to the correctness of each of the statements or dimensions contained in these particulars. All dimensions given are fair size, not maximum measurements. Interior images are from the show flat. Computer generated images are only intended to give an impression for this development. Please contact a sales representative for further details.

GROUND FLOOR

> APARTMENT 2

FIRST FLOOR

> NA

SECOND FLOOR

> NA

THIRD FLOOR

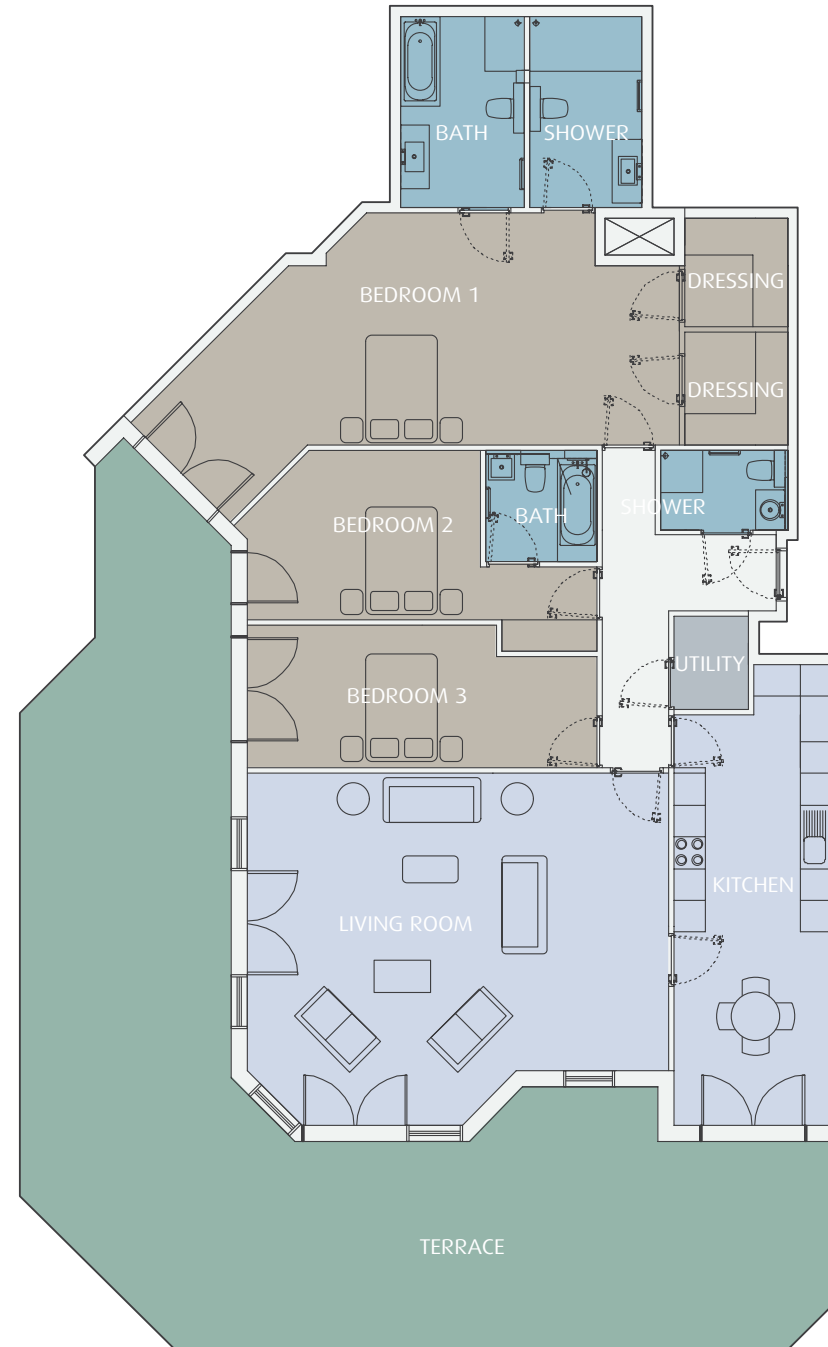
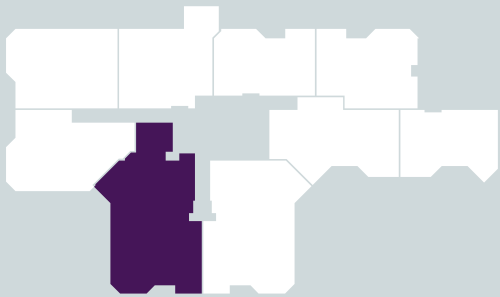
> NA

FOURTH FLOOR

> NA

FIFTH FLOOR

> NA



INTERIOR AREA: 196 sq.m (2108 sq.ft)

- > LIVING ROOM 7.96m x 6.64m (26' 1" x 21' 10")
- > KITCHEN/DINING 8.71m x 3.00m (28' 7" x 9' 10")
- > BEDROOM 1 12.39m x 4.39m (40' 8" x 14' 5")
- > BEDROOM 2 6.60m x 3.20m (21' 8" x 10' 6")
- > BEDROOM 3 6.60m x 2.70m (21' 8" x 8' 10")
- > TERRACE (AREA) 105 sq.m (1124 sq.ft)

Particulars contained in this brochure are for general information only and do not constitute any part of an offer or a contract. All statements contained herein are made without responsibility on the part of the agents or the seller and are not to be relied upon as a statement or representations of fact. Intending purchasers or lessees must satisfy themselves, by inspection, measurement or otherwise, as to the correctness of each of the statements or dimensions contained in these particulars. All dimensions given are fair size, not maximum measurements. Interior images are from the show flat. Computer generated images are only intended to give an impression for this development. Please contact a sales representative for further details.

Apartment: 11



GROUND FLOOR

> NA

FIRST FLOOR

> **APARTMENT 11**

SECOND FLOOR

> NA

THIRD FLOOR

> NA

FOURTH FLOOR

> NA

FIFTH FLOOR

> NA



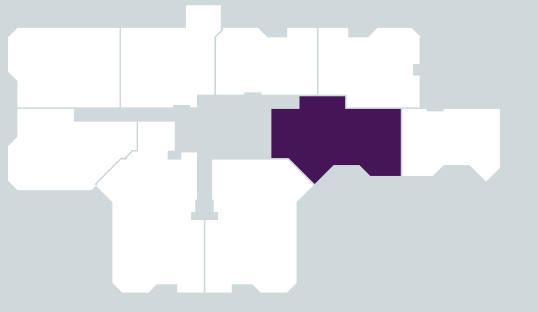
INTERIOR AREA: 117 sq.m (1262 sq.ft)

- > LIVING ROOM 5.53m x 5.02m (18' 2" x 16' 6")
- > KITCHEN 3.00m x 2.50m (9' 10" x 8' 2")
- > BEDROOM 1 9.12m x 6.71m (29' 11" x 22' 1")
- > BEDROOM 2 4.14m x 3.67m (13' 7" x 12' 1")
- > BALCONY (AREA) 20 sq.m (215 sq.ft)

Particulars contained in this brochure are for general information only and do not constitute any part of an offer or a contract. All statements contained herein are made without responsibility on the part of the agents or the seller and are not to be relied upon as a statement or representations of fact. Intending purchasers or lessees must satisfy themselves, by inspection, measurement or otherwise, as to the correctness of each of the statements or dimensions contained in these particulars. All dimensions given are fair size, not maximum measurements. Interior images are from the show flat. Computer generated images are only intended to give an impression for this development. Please contact a sales representative for further details.



- GROUND FLOOR
- > APARTMENT 7
- FIRST FLOOR
- > NA
- SECOND FLOOR
- > APARTMENT 22
- THIRD FLOOR
- > APARTMENT 27
- FOURTH FLOOR
- > APARTMENT 31
- FIFTH FLOOR
- > NA



INTERIOR AREA: 127 sq.m (1365 sq.ft)

- > LIVING ROOM 8.09m x 6.70m (26' 7" x 22' 1")
- > KITCHEN 3.37m x 2.40m (11' 1" x 7' 10")
- > BEDROOM 1 8.03m x 3.00m (26' 4" x 9' 10")
- > BEDROOM 2 5.16m x 3.41m (17' 0" x 11' 2")
- > BEDROOM 3 6.53m x 2.61m (21' 5" x 8' 7")
- > BALCONY (AREA) 20 sq.m (215 sq.ft)
- > TERRACE (APT 7) 37 sq.m (398 sq.ft)

Particulars contained in this brochure are for general information only and do not constitute any part of an offer or a contract. All statements contained herein are made without responsibility on the part of the agents or the seller and are not to be relied upon as a statement or representations of fact. Intending purchasers or lessees must satisfy themselves, by inspection, measurement or otherwise, as to the correctness of each of the statements or dimensions contained in these particulars. All dimensions given are fair size, not maximum measurements. Interior images are from the show flat. Computer generated images are only intended to give an impression for this development. Please contact a sales representative for further details.

Apartments: 40, 44



GROUND FLOOR

> NA

FIRST FLOOR

> NA

SECOND FLOOR

> NA

THIRD FLOOR

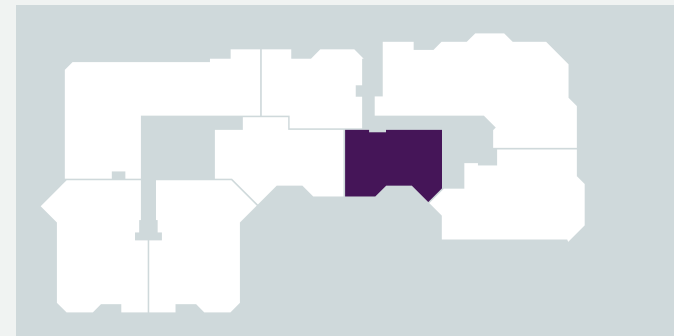
> **APARTMENT 40**

FOURTH FLOOR

> **APARTMENT 44**

FIFTH FLOOR

> NA



30

INTERIOR AREA: 91 sq.m (975 sq.ft)

- > LIVING ROOM 5.53m x 5.02m (18' 2" x 16' 6")
- > KITCHEN 3.00m x 2.40m (9' 10" x 7' 10")
- > BEDROOM 1 8.81m x 3.55m (28' 11" x 11' 8")
- > BEDROOM 2 3.67m x 3.34m (12' 1" x 11' 0")
- > BALCONY (AREA) 20 sq.m (215 sq.ft)

Particulars contained in this brochure are for general information only and do not constitute any part of an offer or a contract. All statements contained herein are made without responsibility on the part of the agents or the seller and are not to be relied upon as a statement or representations of fact. Intending purchasers or lessees must satisfy themselves, by inspection, measurement or otherwise, as to the correctness of each of the statements or dimensions contained in these particulars. All dimensions given are fair size, not maximum measurements. Interior images are from the show flat. Computer generated images are only intended to give an impression for this development. Please contact a sales representative for further details.

GROUND FLOOR

> APARTMENT 33

FIRST FLOOR

> NA

SECOND FLOOR

> NA

THIRD FLOOR

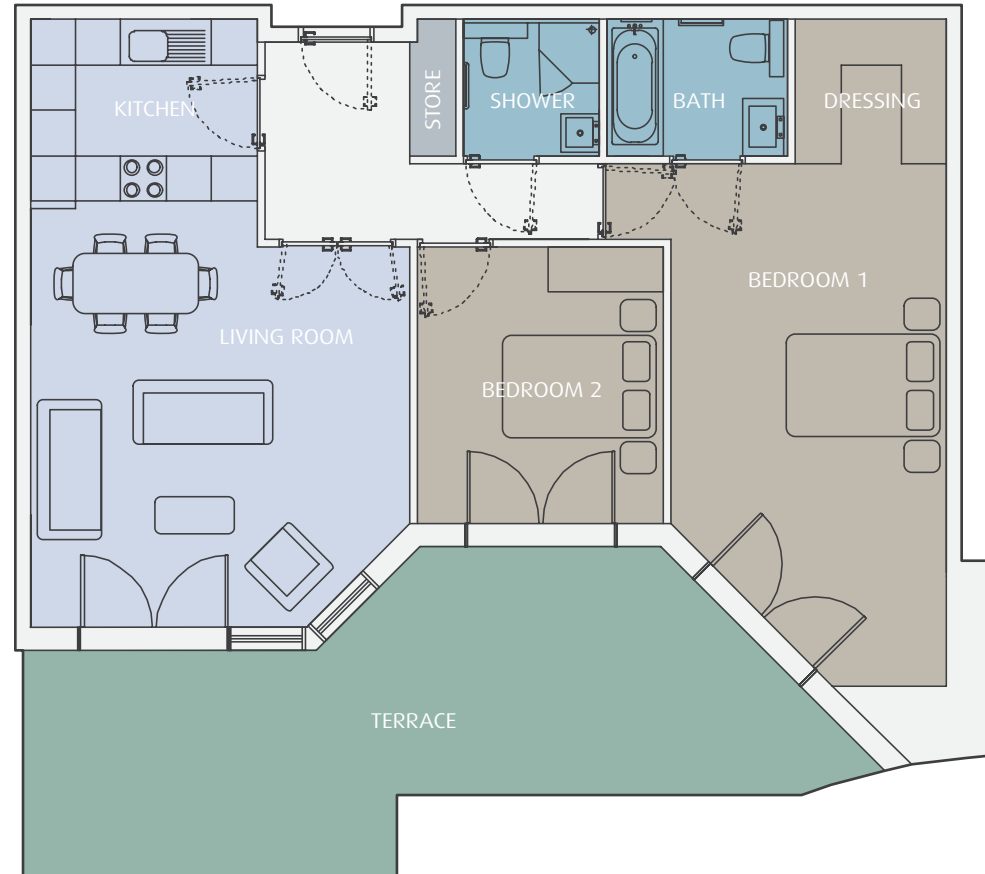
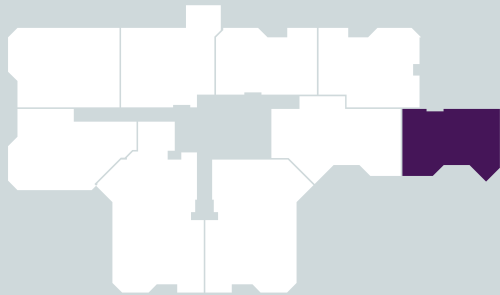
> NA

FOURTH FLOOR

> NA

FIFTH FLOOR

> NA



INTERIOR AREA: 94 sq.m (1011 sq.ft)

- > LIVING ROOM 5.53m x 5.02m (18' 2" x 16' 6")
- > KITCHEN 3.00m x 2.40m (9' 10" x 7' 10")
- > BEDROOM 1 8.81m x 3.55m (28' 11" x 11' 8")
- > BEDROOM 2 3.67m x 3.34m (12' 1" x 11' 0")
- > TERRACE (AREA) 32 sq.m (344 sq.ft)

Particulars contained in this brochure are for general information only and do not constitute any part of an offer or a contract. All statements contained herein are made without responsibility on the part of the agents or the seller and are not to be relied upon as a statement or representations of fact. Intending purchasers or lessees must satisfy themselves, by inspection, measurement or otherwise, as to the correctness of each of the statements or dimensions contained in these particulars. All dimensions given are fair size, not maximum measurements. Interior images are from the show flat. Computer generated images are only intended to give an impression for this development. Please contact a sales representative for further details.

Apartments: 10, 36



GROUND FLOOR

> NA

FIRST FLOOR

> **APARTMENT 10**

SECOND FLOOR

> **APARTMENT 36**

THIRD FLOOR

> NA

FOURTH FLOOR

> NA

FIFTH FLOOR

> NA



INTERIOR AREA: 94 sq.m (1011 sq.ft)

- > LIVING ROOM 5.53m x 5.02m (18' 2" x 16' 6")
- > KITCHEN 3.00m x 2.40m (9' 10" x 7' 10")
- > BEDROOM 1 8.81m x 3.55m (28' 11" x 11' 8")
- > BEDROOM 2 3.67m x 3.34m (12' 1" x 11' 0")
- > BALCONY (AREA) 20 sq.m (215 sq.ft)

Particulars contained in this brochure are for general information only and do not constitute any part of an offer or a contract. All statements contained herein are made without responsibility on the part of the agents or the seller and are not to be relied upon as a statement or representations of fact. Intending purchasers or lessees must satisfy themselves, by inspection, measurement or otherwise, as to the correctness of each of the statements or dimensions contained in these particulars. All dimensions given are fair size, not maximum measurements. Interior images are from the show flat. Computer generated images are only intended to give an impression for this development. Please contact a sales representative for further details.

GROUND FLOOR

> NA

FIRST FLOOR

> NA

SECOND FLOOR

> NA

THIRD FLOOR

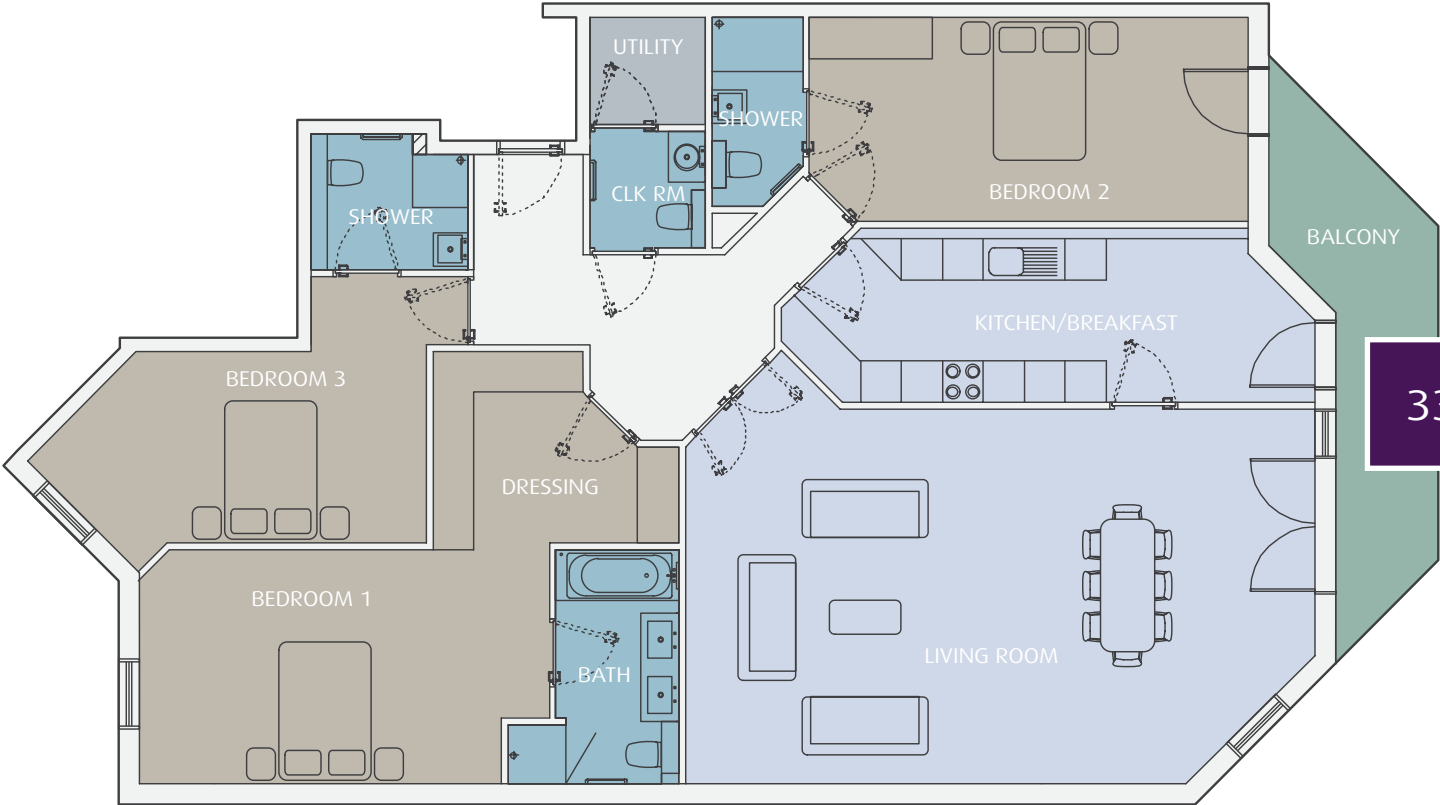
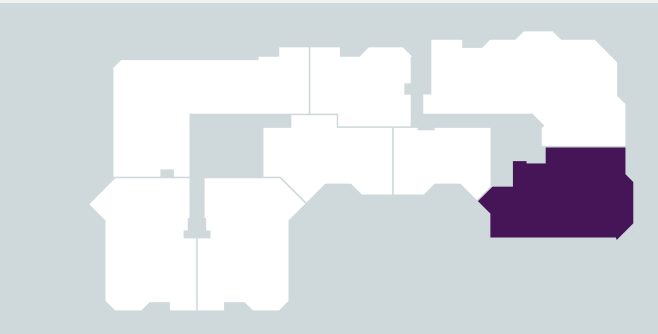
> APARTMENT 39

FOURTH FLOOR

> APARTMENT 43

FIFTH FLOOR

> NA



INTERIOR AREA: 172 sq.m (1846 sq.ft)

- > LIVING ROOM 9.25m x 5.51m (30' 4" x 18' 1")
- > KITCHEN 7.83m x 2.40m (25' 9" x 7' 11")
- > BEDROOM 1 8.03m x 6.35m (26' 4" x 20' 10")
- > BEDROOM 2 6.44m x 3.00m (21' 2" x 9' 10")
- > BEDROOM 3 5.86m x 3.91m (19' 3" x 12' 10")
- > BALCONY (AREA) 12 sq.m (129 sq.ft)

Particulars contained in this brochure are for general information only and do not constitute any part of an offer or a contract. All statements contained herein are made without responsibility on the part of the agents or the seller and are not to be relied upon as a statement or representations of fact. Intending purchasers or lessees must satisfy themselves, by inspection, measurement or otherwise, as to the correctness of each of the statements or dimensions contained in these particulars. All dimensions given are fair size, not maximum measurements. Interior images are from the show flat. Computer generated images are only intended to give an impression for this development. Please contact a sales representative for further details.

Apartment: 3



GROUND FLOOR

> APARTMENT 3

FIRST FLOOR

> NA

SECOND FLOOR

> NA

THIRD FLOOR

> NA

FOURTH FLOOR

> NA

FIFTH FLOOR

> NA



INTERIOR AREA: 121 sq.m (1297 sq.ft)

- > LIVING ROOM 7.96m x 6.28m (26' 2" x 20' 7")
- > KITCHEN 4.00m x 2.74m (13' 2" x 9' 0")
- > BEDROOM 1 8.34m x 4.61m (27' 5" x 15' 2")
- > BEDROOM 2 5.83m x 3.41m (19' 2" x 11' 2")
- > TERRACE (AREA) 33 sq.m (358 sq.ft)

Particulars contained in this brochure are for general information only and do not constitute any part of an offer or a contract. All statements contained herein are made without responsibility on the part of the agents or the seller and are not to be relied upon as a statement or representations of fact. Intending purchasers or lessees must satisfy themselves, by inspection, measurement or otherwise, as to the correctness of each of the statements or dimensions contained in these particulars. All dimensions given are fair size, not maximum measurements. Interior images are from the show flat. Computer generated images are only intended to give an impression for this development. Please contact a sales representative for further details.



GROUND FLOOR

> NA

FIRST FLOOR

> NA

SECOND FLOOR

> NA

THIRD FLOOR

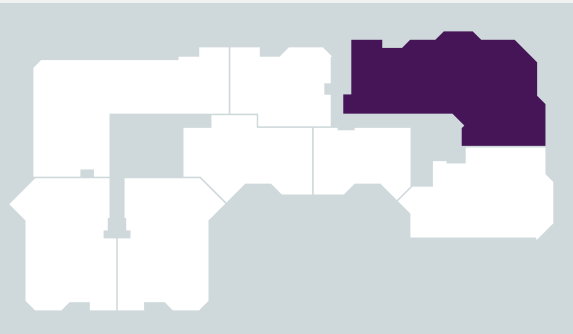
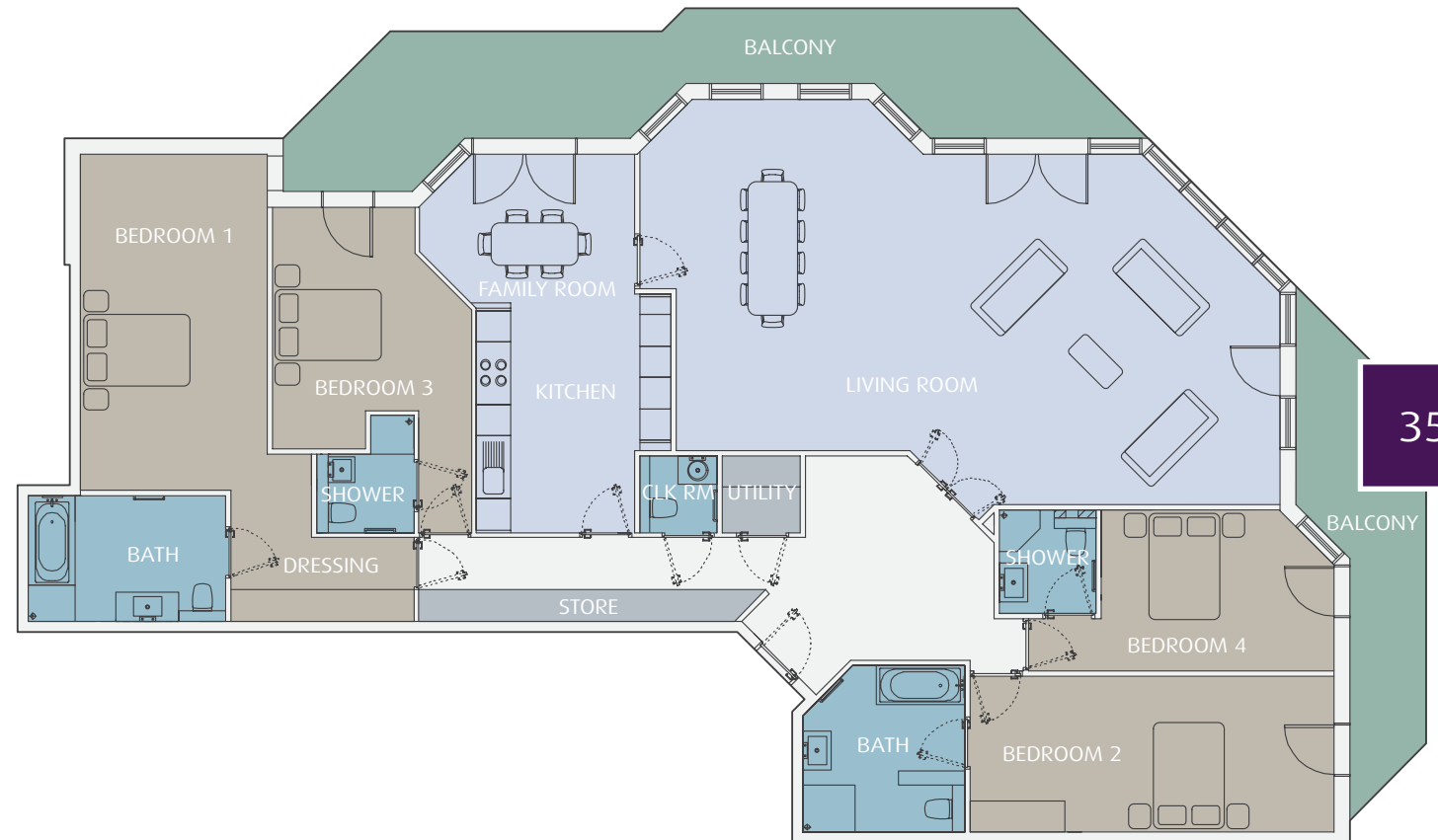
> APARTMENT 38

FOURTH FLOOR

> APARTMENT 42

FIFTH FLOOR

> NA

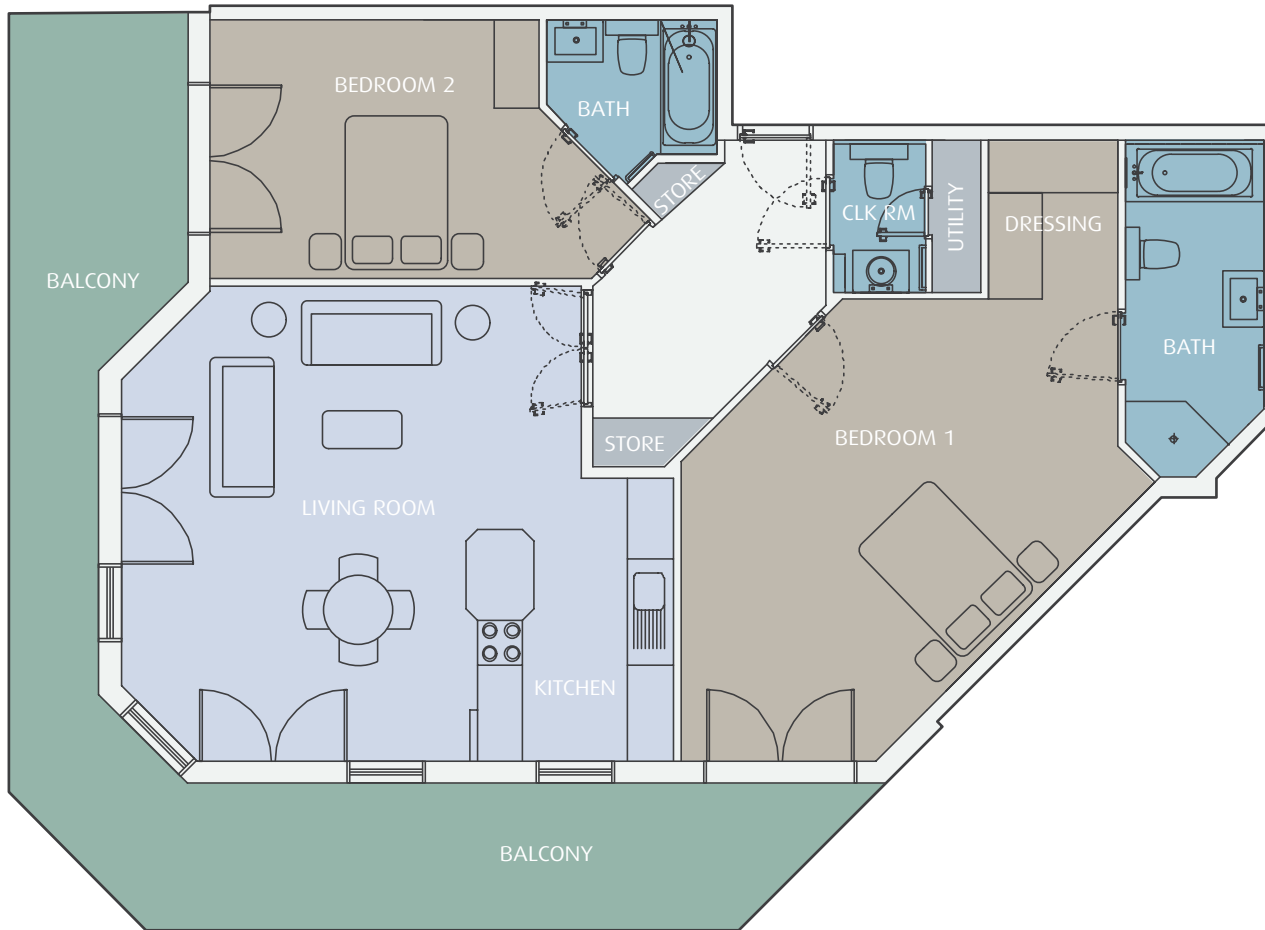


INTERIOR AREA: 249 sq.m (2675 sq.ft)

- > LIVING ROOM 12.25m x 7.76m (40' 2" x 25' 6")
- > KITCHEN 4.25m x 3.71m (13' 11" x 12' 2")
- > FAMILY ROOM 4.10m x 2.84m (13' 5" x 9' 4")
- > BEDROOM 1 8.93m x 3.57m (29' 4" x 11' 9")
- > BEDROOM 2 6.95m x 2.98m (22' 10" x 9' 10")
- > BEDROOM 3 4.62m x 3.80m (12' 6" x 15' 2")
- > BEDROOM 4 5.85m x 3.07m (19' 6" x 10' 1")
- > BALCONIES x2 (AREA) 47 sq.m (505 sq.ft)

Particulars contained in this brochure are for general information only and do not constitute any part of an offer or a contract. All statements contained herein are made without responsibility on the part of the agents or the seller and are not to be relied upon as a statement or representations of fact. Intending purchasers or lessees must satisfy themselves, by inspection, measurement or otherwise, as to the correctness of each of the statements or dimensions contained in these particulars. All dimensions given are fair size, not maximum measurements. Interior images are from the show flat. Computer generated images are only intended to give an impression for this development. Please contact a sales representative for further details.

Apartment: 14



36

- GROUND FLOOR
- > NA
- FIRST FLOOR
- > **APARTMENT 14**
- SECOND FLOOR
- > NA
- THIRD FLOOR
- > NA
- FOURTH FLOOR
- > NA
- FIFTH FLOOR
- > NA



INTERIOR AREA: 119 sq.m (1275 sq.ft)

- > LIVING ROOM 7.94m x 6.28m (26' 1" x 20' 7")
- > KITCHEN 4.00m x 2.75m (13' 2" x 9' 0")
- > BEDROOM 1 8.36m x 4.62m (27' 5" x 15' 2")
- > BEDROOM 2 5.81m x 3.41m (19' 1" x 11' 2")
- > BALCONY (AREA) 37 sq.m (398 sq.ft)

Particulars contained in this brochure are for general information only and do not constitute any part of an offer or a contract. All statements contained herein are made without responsibility on the part of the agents or the seller and are not to be relied upon as a statement or representations of fact. Intending purchasers or lessees must satisfy themselves, by inspection, measurement or otherwise, as to the correctness of each of the statements or dimensions contained in these particulars. All dimensions given are fair size, not maximum measurements. Interior images are from the show flat. Computer generated images are only intended to give an impression for this development. Please contact a sales representative for further details.

GROUND FLOOR

> APARTMENT 5

FIRST FLOOR

> NA

SECOND FLOOR

> NA

THIRD FLOOR

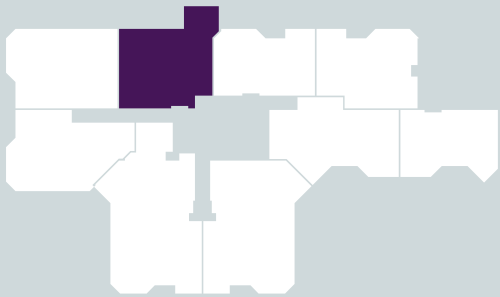
> NA

FOURTH FLOOR

> NA

FIFTH FLOOR

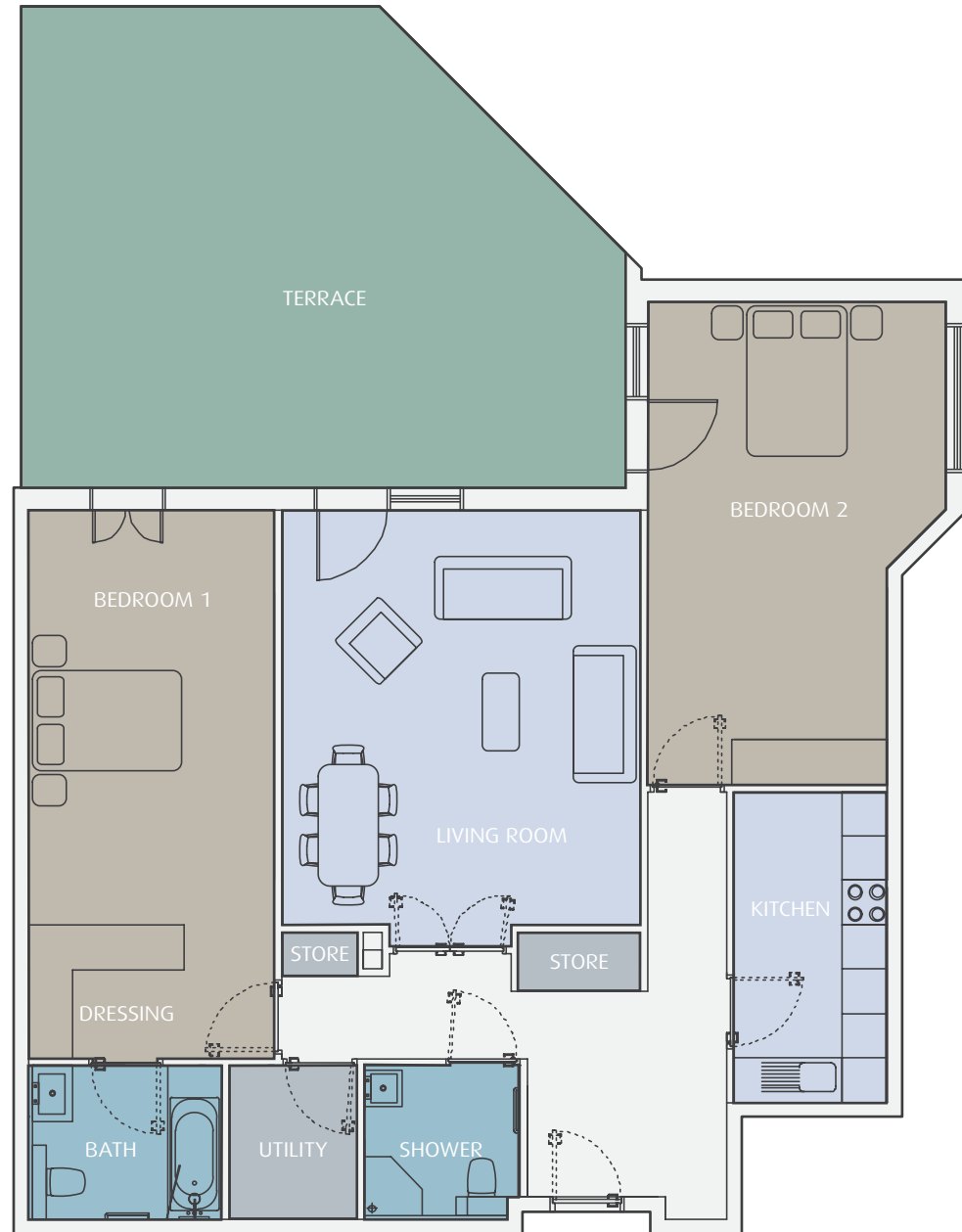
> NA



INTERIOR AREA: 119 sq.m (1275 sq.ft)

- > LIVING ROOM 5.60m x 4.84m (18' 4" x 15' 10")
- > KITCHEN 4.20m x 2.06m (10' 4" x 9' 10")
- > BEDROOM 1 7.38m x 3.32m (24' 3" x 10' 11")
- > BEDROOM 2 4.03m x 6.51m (13' 3" x 21' 4")
- > TERRACE (AREA) 46 sq.m (495 sq.ft)

Particulars contained in this brochure are for general information only and do not constitute any part of an offer or a contract. All statements contained herein are made without responsibility on the part of the agents or the seller and are not to be relied upon as a statement or representations of fact. Intending purchasers or lessees must satisfy themselves, by inspection, measurement or otherwise, as to the correctness of each of the statements or dimensions contained in these particulars. All dimensions given are fair size, not maximum measurements. Interior images are from the show flat. Computer generated images are only intended to give an impression for this development. Please contact a sales representative for further details.

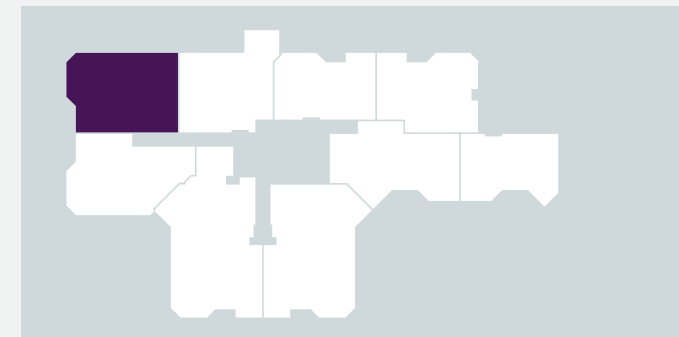


Apartment: 4



38

- GROUND FLOOR
- > APARTMENT 4
- FIRST FLOOR
- > NA
- SECOND FLOOR
- > NA
- THIRD FLOOR
- > NA
- FOURTH FLOOR
- > NA
- FIFTH FLOOR
- > NA



INTERIOR AREA: 125 sq.m (1342 sq.ft)

- > LIVING ROOM 4.72m x 6.18m (24' 4" x 20' 4")
- > KITCHEN 2.70m x 4.40m (9' 9" x 7' 10")
- > BEDROOM 1 7.38m x 3.27m (24' 3" x 10' 9")
- > BEDROOM 2 4.33m x 3.29m (14' 3" x 10' 10")
- > STUDY/BED 3 2.65m x 6.18m (20' 4" x 8' 9")
- > TERRACES x2 (AREA) 100 sq.m (1,076 sq.ft)

Particulars contained in this brochure are for general information only and do not constitute any part of an offer or a contract. All statements contained herein are made without responsibility on the part of the agents or the seller and are not to be relied upon as a statement or representations of fact. Intending purchasers or lessees must satisfy themselves, by inspection, measurement or otherwise, as to the correctness of each of the statements or dimensions contained in these particulars. All dimensions given are fair size, not maximum measurements. Interior images are from the show flat. Computer generated images are only intended to give an impression for this development. Please contact a sales representative for further details.

GROUND FLOOR

> NA

FIRST FLOOR

> APARTMENT 15

SECOND FLOOR

> NA

THIRD FLOOR

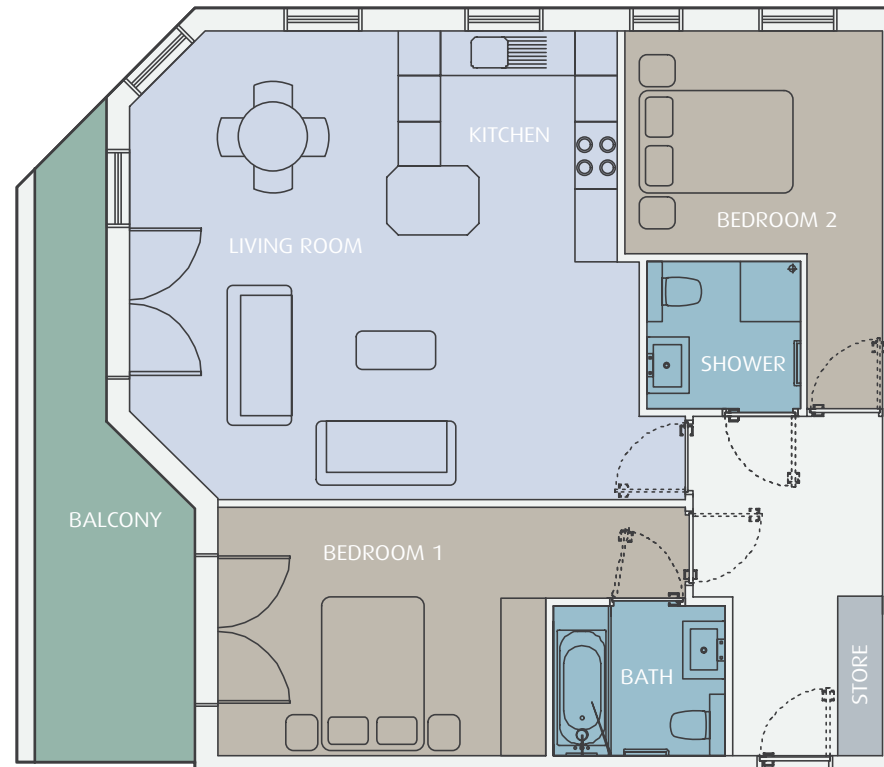
> NA

FOURTH FLOOR

> NA

FIFTH FLOOR

> NA

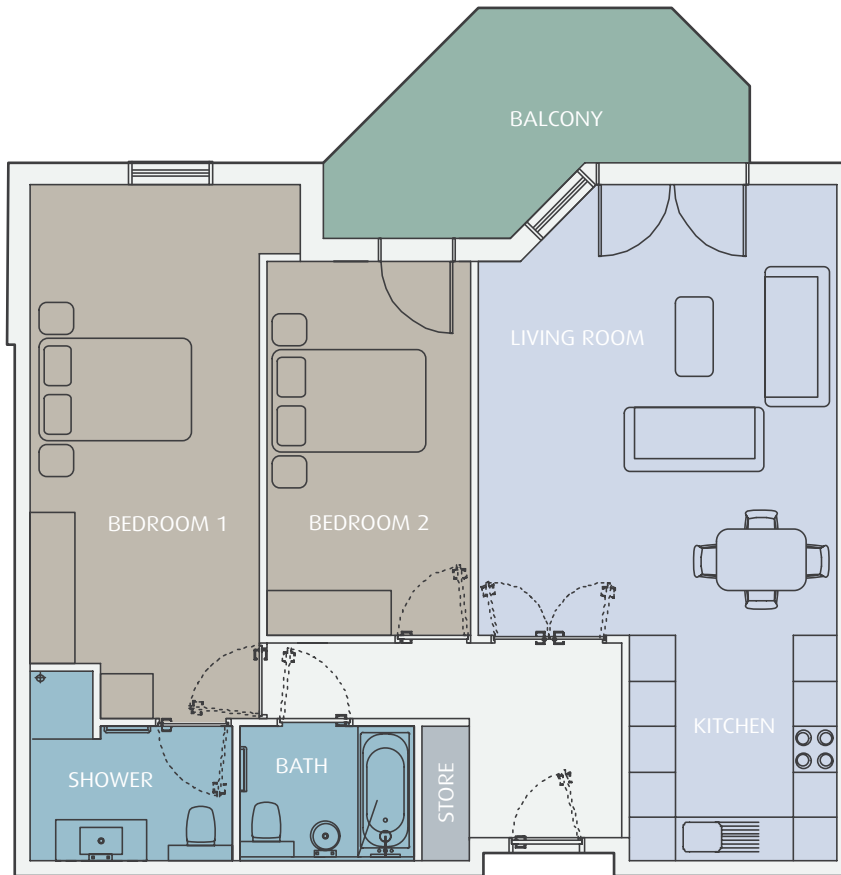


INTERIOR AREA: 90 sq.m (972 sq.ft)

- > LIVING ROOM 6.74m x 6.19m (22' 2" x 20' 4")
- > KITCHEN 2.89m x 3.14m (9' 9" x 10' 3")
- > BEDROOM 1 6.17m x 3.28m (20' 3" x 10' 9")
- > BEDROOM 2 2.95m x 3.43m (9' 8" x 11' 3")
- > BALCONY (AREA) 14 sq.m (150 sq.ft)

Particulars contained in this brochure are for general information only and do not constitute any part of an offer or a contract. All statements contained herein are made without responsibility on the part of the agents or the seller and are not to be relied upon as a statement or representations of fact. Intending purchasers or lessees must satisfy themselves, by inspection, measurement or otherwise, as to the correctness of each of the statements or dimensions contained in these particulars. All dimensions given are fair size, not maximum measurements. Interior images are from the show flat. Computer generated images are only intended to give an impression for this development. Please contact a sales representative for further details.

Apartment: 35



GROUND FLOOR

> NA

FIRST FLOOR

> NA

SECOND FLOOR

> **APARTMENT 35**

THIRD FLOOR

> NA

FOURTH FLOOR

> NA

FIFTH FLOOR

> NA



40

INTERIOR AREA: 91 sq.m (975 sq.ft)

- > LIVING ROOM 5.95m x 4.73m (19' 7" x 15' 6")
- > KITCHEN 2.73m x 2.97m (9' 9" x 9' 0")
- > BEDROOM 1 7.05m x 3.02m (23' 2" x 9' 11")
- > BEDROOM 2 4.95m x 2.70m (16' 3" x 8' 10")
- > BALCONY (AREA) 12 sq.m (129 sq.ft)

Particulars contained in this brochure are for general information only and do not constitute any part of an offer or a contract. All statements contained herein are made without responsibility on the part of the agents or the seller and are not to be relied upon as a statement or representations of fact. Intending purchasers or lessees must satisfy themselves, by inspection, measurement or otherwise, as to the correctness of each of the statements or dimensions contained in these particulars. All dimensions given are fair size, not maximum measurements. Interior images are from the show flat. Computer generated images are only intended to give an impression for this development. Please contact a sales representative for further details.

GROUND FLOOR

> NA

FIRST FLOOR

> NA

SECOND FLOOR

> APARTMENT 19

THIRD FLOOR

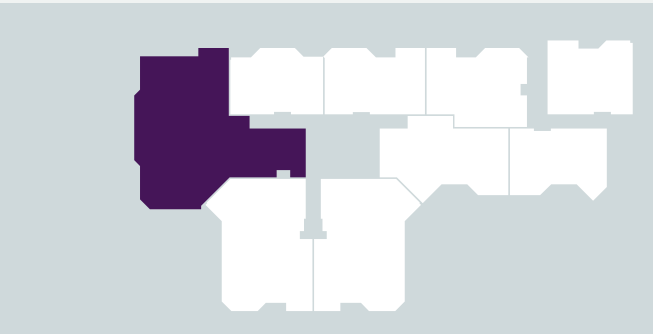
> NA

FOURTH FLOOR

> NA

FIFTH FLOOR

> NA



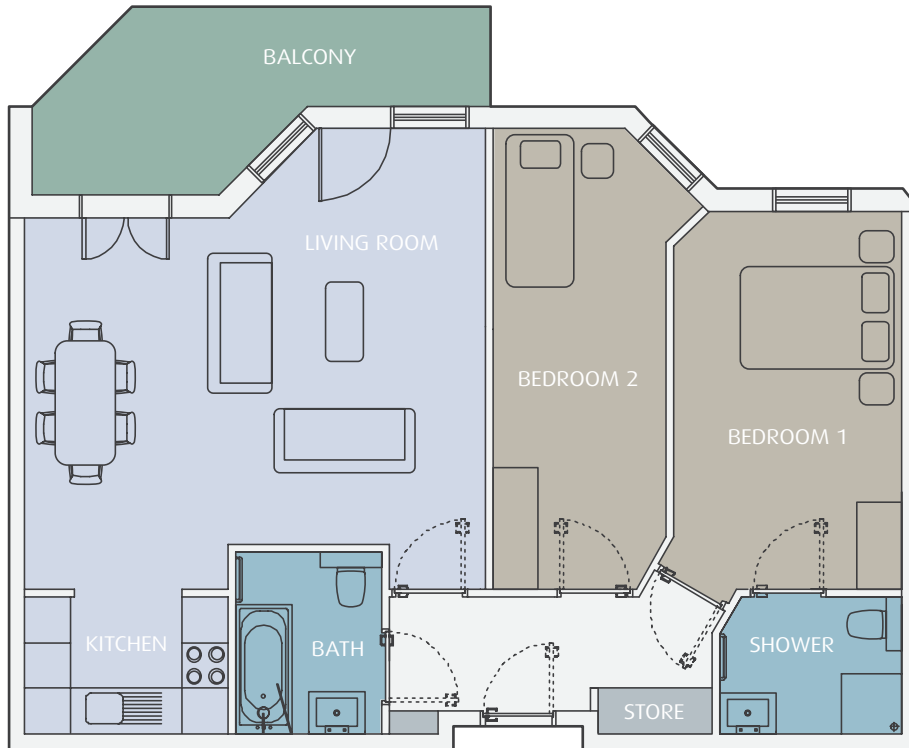
INTERIOR AREA: 265 sq.m (2847 sq.ft)

- > LIVING ROOM 7.19m x 6.24m (23' 7" x 20' 6")
- > KITCHEN 7.28m x 3.50m (23' 11" x 11' 6")
- > BEDROOM 1 8.74m x 7.09m (28' 8" x 23' 3")
- > BEDROOM 2 5.12m x 4.56m (16' 10" x 15' 0")
- > BEDROOM 3 3.95m x 3.00m (13' 0" x 9' 10")
- > STUDY 4.10m x 2.69m (13' 5" x 8' 10")
- > MEDIA ROOM 7.41m x 3.95m (24' 4" x 13' 0")
- > BALCONY (AREA) 40 sq.m (428 sq.ft)

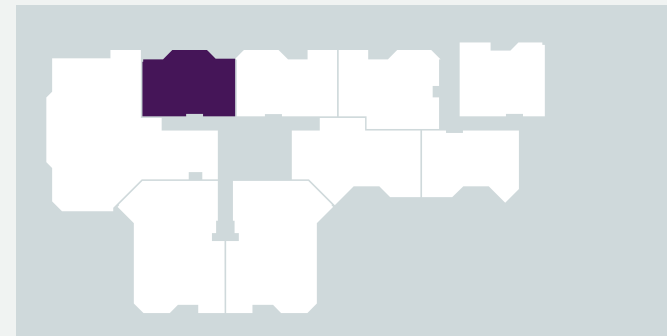
Particulars contained in this brochure are for general information only and do not constitute any part of an offer or a contract. All statements contained herein are made without responsibility on the part of the agents or the seller and are not to be relied upon as a statement or representations of fact. Intending purchasers or lessees must satisfy themselves, by inspection, measurement or otherwise, as to the correctness of each of the statements or dimensions contained in these particulars. All dimensions given are fair size, not maximum measurements. Interior images are from the show flat. Computer generated images are only intended to give an impression for this development. Please contact a sales representative for further details.



Apartment: 20



- GROUND FLOOR
- > NA
- FIRST FLOOR
- > NA
- SECOND FLOOR
- > **APARTMENT 20**
- THIRD FLOOR
- > NA
- FOURTH FLOOR
- > NA
- FIFTH FLOOR
- > NA



INTERIOR AREA: 85 sq.m (914 sq.ft)

- > LIVING ROOM 6.08m x 6.09m (20' 0" x 20' 0")
- > KITCHEN 2.68m x 1.90m (8' 10" x 6' 3")
- > BEDROOM 1 5.00m x 3.01m (16' 5" x 9' 11")
- > BEDROOM 2 6.09m x 2.29m (20' 0" x 7' 7")
- > BALCONY (AREA) 11 sq.m (118 sq.ft)

Particulars contained in this brochure are for general information only and do not constitute any part of an offer or a contract. All statements contained herein are made without responsibility on the part of the agents or the seller and are not to be relied upon as a statement or representations of fact. Intending purchasers or lessees must satisfy themselves, by inspection, measurement or otherwise, as to the correctness of each of the statements or dimensions contained in these particulars. All dimensions given are fair size, not maximum measurements. Interior images are from the show flat. Computer generated images are only intended to give an impression for this development. Please contact a sales representative for further details.

GROUND FLOOR

> NA

FIRST FLOOR

> APARTMENT 49

SECOND FLOOR

> NA

THIRD FLOOR

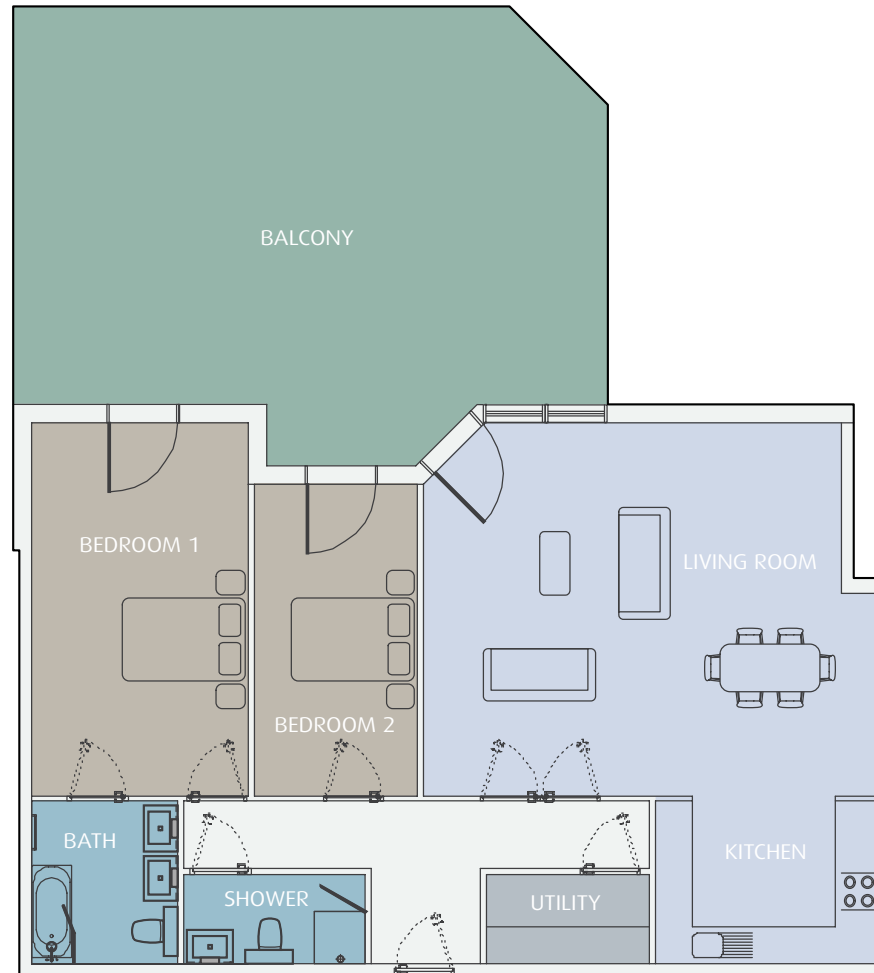
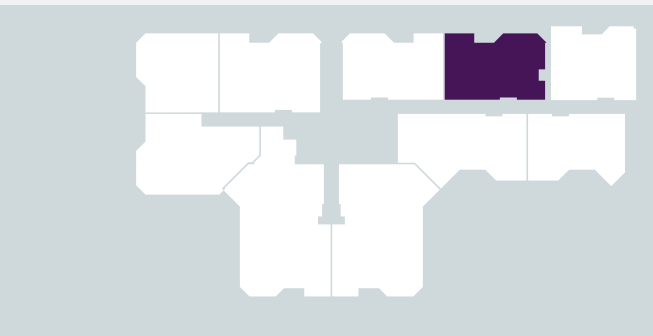
> NA

FOURTH FLOOR

> NA

FIFTH FLOOR

> NA

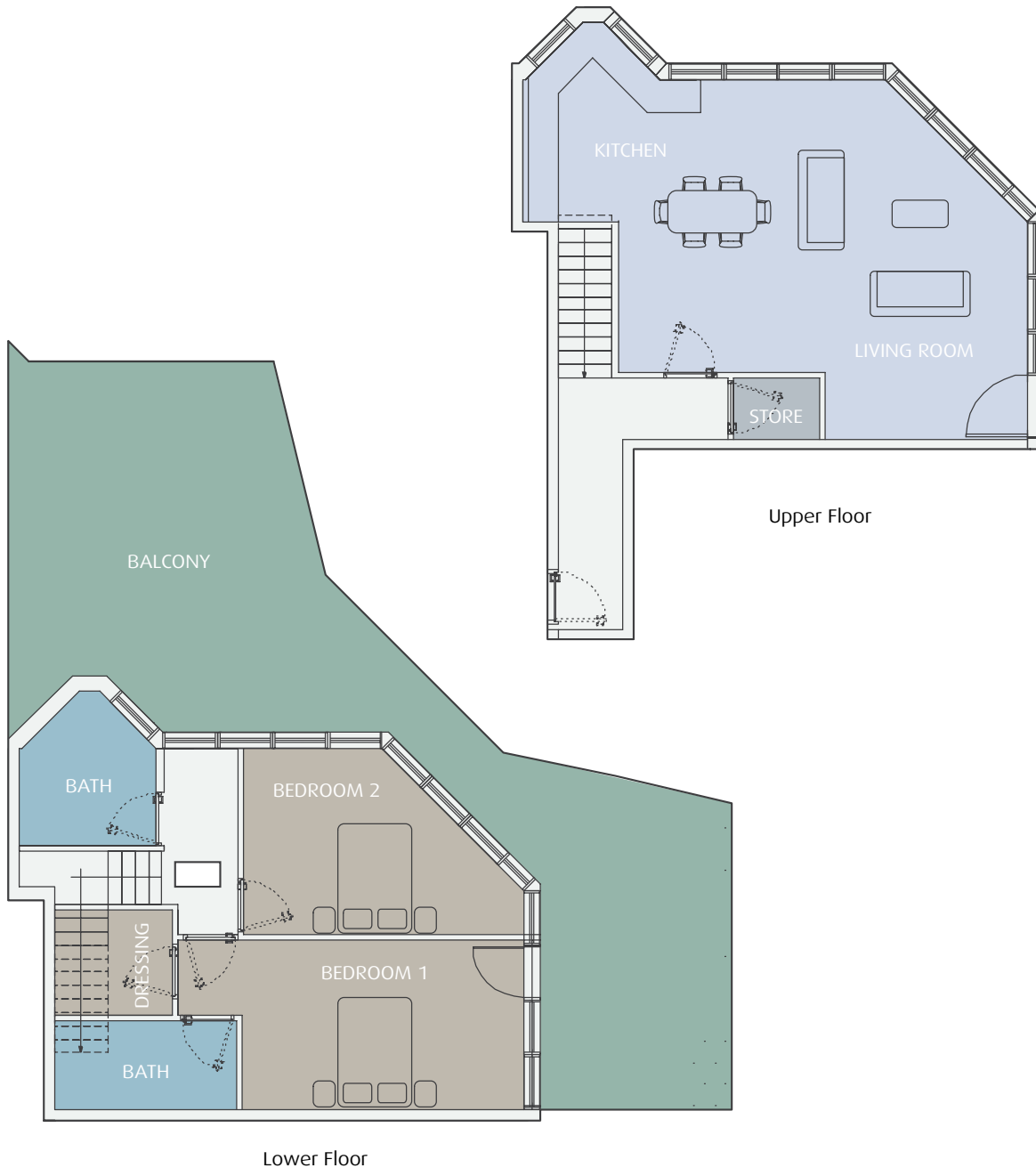


INTERIOR AREA: 120 sq.m (1284 sq.ft)

- > LIVING ROOM 7.55m x 6.15m (24' 8" x 20' 2")
- > KITCHEN 3.72m x 2.67m (12' 2" x 8' 8")
- > BEDROOM 1 6.16m x 3.57m (20' 2" x 11' 7")
- > BEDROOM 2 5.15m x 2.70m (16' 8" x 8' 8")
- > BALCONY (AREA) 65 sq.m (695.5 sq.ft)

Particulars contained in this brochure are for general information only and do not constitute any part of an offer or a contract. All statements contained herein are made without responsibility on the part of the agents or the seller and are not to be relied upon as a statement or representations of fact. Intending purchasers or lessees must satisfy themselves, by inspection, measurement or otherwise, as to the correctness of each of the statements or dimensions contained in these particulars. All dimensions given are fair size, not maximum measurements. Interior images are from the show flat. Computer generated images are only intended to give an impression for this development. Please contact a sales representative for further details.

Apartment: 50



- GROUND FLOOR
- > APARTMENT 50
- FIRST FLOOR
- > APARTMENT 50
- SECOND FLOOR
- > NA
- THIRD FLOOR
- > NA
- FOURTH FLOOR
- > NA
- FIFTH FLOOR
- > NA



INTERIOR AREA: 120 sq.m (1284 sq.ft)

- > LIVING ROOM 7.60m x 5.42m (24' 9" x 17' 7")
- > KITCHEN 3.63m x 1.70m (12' 0" x 5' 5")
- > BEDROOM 1 5.22m x 3.15m (17' 2" x 10' 4")
- > BEDROOM 2 5.22m x 3.43m (17' 2" x 11' 3")
- > BALCONY (AREA) 85 sq.m (909.5 sq.ft)

Particulars contained in this brochure are for general information only and do not constitute any part of an offer or a contract. All statements contained herein are made without responsibility on the part of the agents or the seller and are not to be relied upon as a statement or representations of fact. Intending purchasers or lessees must satisfy themselves, by inspection, measurement or otherwise, as to the correctness of each of the statements or dimensions contained in these particulars. All dimensions given are fair size, not maximum measurements. Interior images are from the show flat. Computer generated images are only intended to give an impression for this development. Please contact a sales representative for further details.



West Heath Place

London NW11

The Penthouses

(Floor Plans)

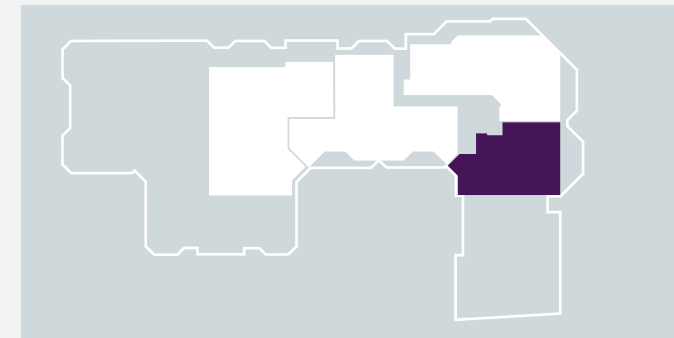
The Dorchester (No.47)



46



- GROUND FLOOR
- > NA
- FIRST FLOOR
- > NA
- SECOND FLOOR
- > NA
- THIRD FLOOR
- > NA
- FOURTH FLOOR
- > NA
- FIFTH FLOOR
- > **The Dorchester (No.47)**



INTERIOR AREA: 154 sq.m (1662 sq.ft)

- > LIVING ROOM 7.23m x 5.66m (23' 9" x 18' 7")
- > KITCHEN 5.80m x 2.40m (19' 1" x 7' 11")
- > BEDROOM 1 7.92m x 6.35m (26' 0" x 20' 10")
- > BEDROOM 2 5.40m x 3.00m (17' 9" x 9' 10")
- > BEDROOM 3 5.86m x 3.91m (19' 3" x 12' 10")
- > BALCONY (AREA) 26 sq.m (279 sq.ft)

Particulars contained in this brochure are for general information only and do not constitute any part of an offer or a contract. All statements contained herein are made without responsibility on the part of the agents or the seller and are not to be relied upon as a statement or representations of fact. Intending purchasers or lessees must satisfy themselves, by inspection, measurement or otherwise, as to the correctness of each of the statements or dimensions contained in these particulars. All dimensions given are fair size, not maximum measurements. Interior images are from the show flat. Computer generated images are only intended to give an impression for this development. Please contact a sales representative for further details.

GROUND FLOOR

> NA

FIRST FLOOR

> NA

SECOND FLOOR

> NA

THIRD FLOOR

> NA

FOURTH FLOOR

> NA

FIFTH FLOOR

> The Kenwood (No.48)



INTERIOR AREA: 249 sq.m (2663 sq.ft)

- > LIVING/DINING 8.90m x 5.82m (29' 1" x 19' 1")
- > KITCHEN 3.30m x 7.07m (10' 8" x 23' 2")
- > FAMILY ROOM 6.54m x 4.67m (21' 5" x 15' 3")
- > BEDROOM 1 7.10m x 6.99m (23' 11" x 22' 9")
- > BEDROOM 2 5.66m x 5.03m (18' 5" x 16' 6")
- > BEDROOM 3 5.69m x 4.92m (18' 6" x 16' 1")
- > BALCONY (AREA) 45 sq.m (483 sq.ft)

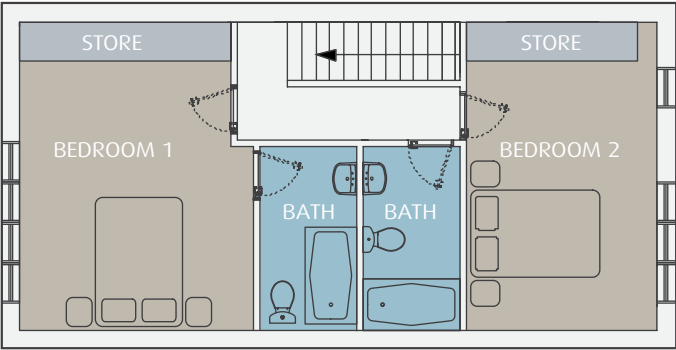
Particulars contained in this brochure are for general information only and do not constitute any part of an offer or a contract. All statements contained herein are made without responsibility on the part of the agents or the seller and are not to be relied upon as a statement or representations of fact. Intending purchasers or lessees must satisfy themselves, by inspection, measurement or otherwise, as to the correctness of each of the statements or dimensions contained in these particulars. All dimensions given are fair size, not maximum measurements. Interior images are from the show flat. Computer generated images are only intended to give an impression for this development. Please contact a sales representative for further details.



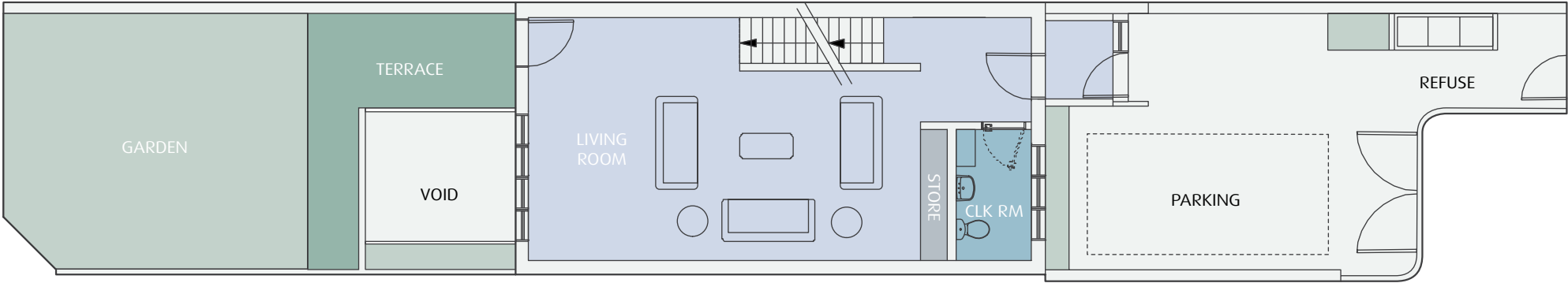
The Kenwood (No.48)



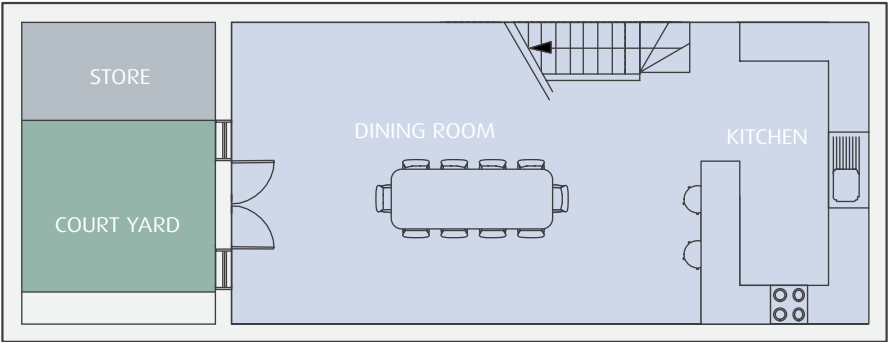
The Cottage



FIRST FLOOR



GROUND FLOOR



LOWER FLOOR

LOWER FLOOR

> The Cottage

GROUND FLOOR

> The Cottage

FIRST FLOOR

> The Cottage

SECOND FLOOR

> NA

THIRD FLOOR

> NA

FOURTH FLOOR

> NA

FIFTH FLOOR

> NA



INTERIOR AREA: 147 sq.m (1574 sq.ft)

- > LIVING ROOM 7.80m x 4.85m (25' 5" x 15' 9")
- > DINING ROOM 7.38m x 4.75m (24' 2" x 15' 5")
- > KITCHEN 4.75m x 2.60m (15' 5" x 8' 5")
- > BEDROOM 1 4.85m x 3.66m (15' 9" x 12' 0")
- > BEDROOM 2 4.85m x 2.99m (15' 9" x 9' 8")

Particulars contained in this brochure are for general information only and do not constitute any part of an offer or a contract. All statements contained herein are made without responsibility on the part of the agents or the seller and are not to be relied upon as a statement or representations of fact. Intending purchasers or lessees must satisfy themselves, by inspection, measurement or otherwise, as to the correctness of each of the statements or dimensions contained in these particulars. All dimensions given are fair size, not maximum measurements. Interior images are from the show flat. Computer generated images are only intended to give an impression for this development. Please contact a sales representative for further details.



Images are of a typical West Heath Place apartment

Sole Agents

For further information contact:

Phone: +44 (0)20 8731 9500

Email: newhomes@glentree.co.uk

www.glentree.co.uk



glentree

NEW HOMES

Particulars contained in this brochure are for general information only and do not constitute any part of an offer or a contract. All statements contained herein are made without responsibility on the part of the agents or the seller and are not to be relied upon as a statement or representations of fact. Intending purchasers or lessees must satisfy themselves, by inspection, measurement or otherwise, as to the correctness of each of the statements or dimensions contained in these particulars. All dimensions given are fair size, not maximum measurements. Interior images are from the show flat. Computer generated images are only intended to give an impression for this development. Please contact a sales representative for further details

The development includes a social housing element, with a separate entrance and separate internal common parts. Further details are included within the planning agreement relating to the development, a copy of which will be supplied to your solicitors along with the remaining title papers.

50



Golders Hill Park



West Heath Place

London NW11

West Heath Place

1b, Hodford Road,
London, NW11 8NL

Show Flat Phone: 020 8201 8780
Email: sales@westheathplace.com

www.westheathplace.com

SHOW FLAT NOW OPEN By Appointment

Location Map





glentree
NEW HOMES



West Heath Place



A development by
Albany Homes International

Sole Agents

For further information contact:

Phone: +44 (0)20 8731 9500

Email: newhomes@glentree.co.uk

www.glentree.co.uk

West Heath Place

1b, Hodford Road,
London, NW11 8NL

Show Flat Phone: 020 8201 8780

Email: sales@westheathplace.com

www.westheathplace.com