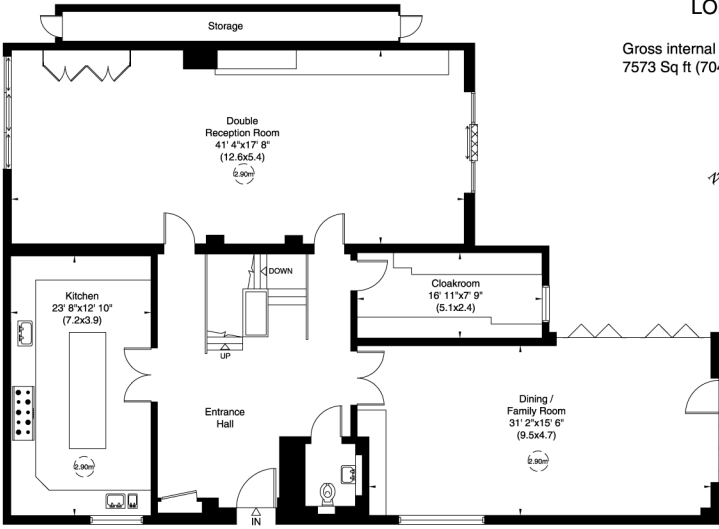
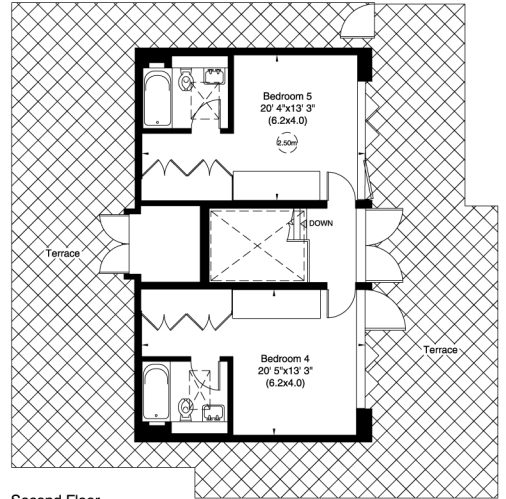


VIEW ROAD  
LONDON N6

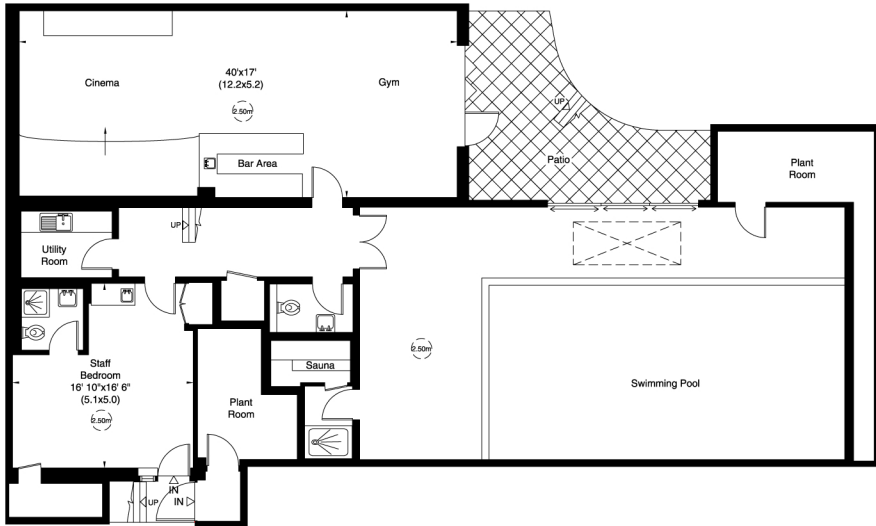
Gross internal area (approx.)  
7573 Sq ft (704 Sq m) Including Storage



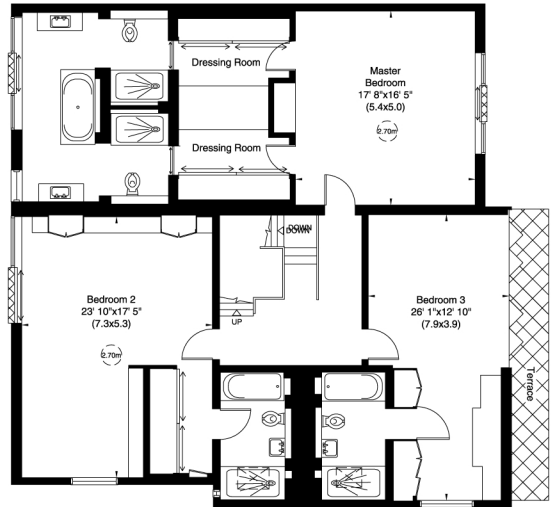
Ground Floor



Second Floor



Lower Ground Floor

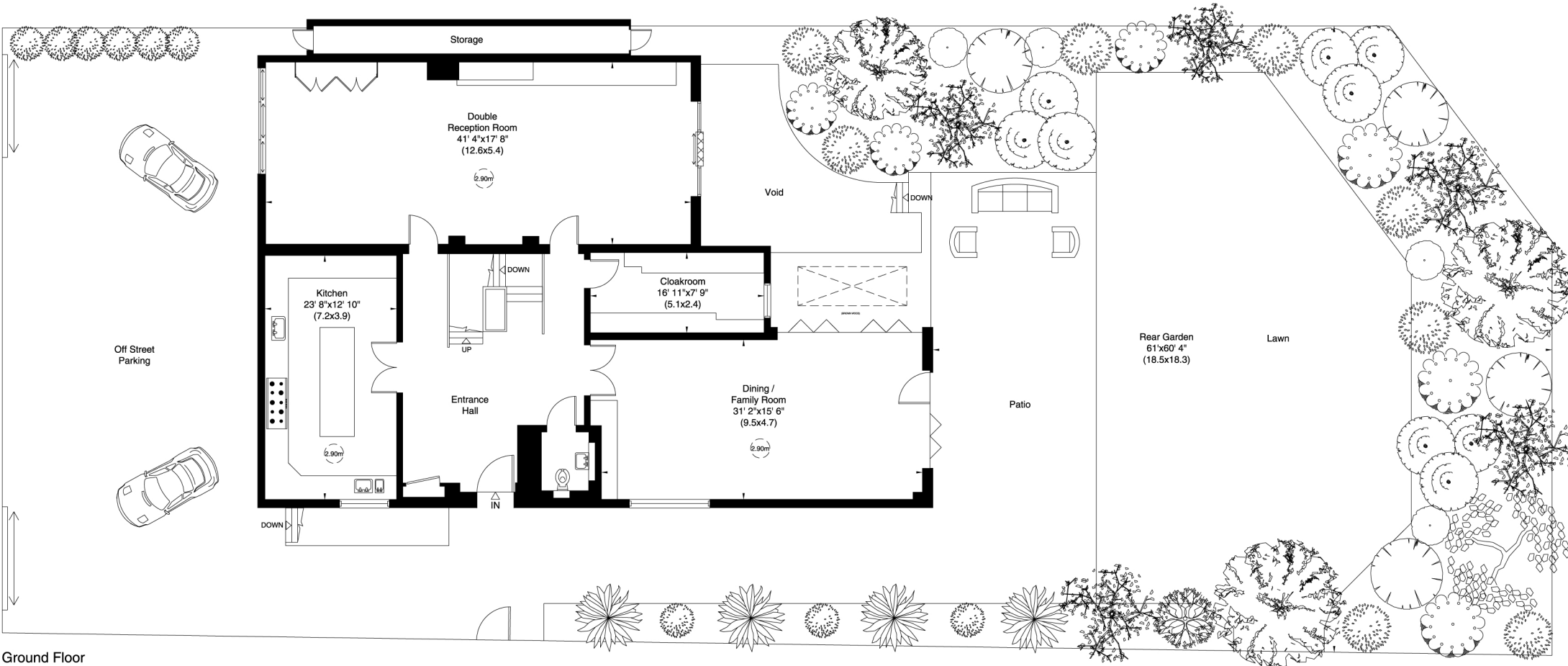


First Floor

Not to scale, for guidance only and must not be relied upon as a statement of fact. All measurements and areas are approximate only (and have been prepared in accordance with the current edition of the RICS Code of Measuring Practice).

VIEW ROAD  
LONDON N6

Site Plan



Ground Floor

Not to scale, for guidance only and must not be relied upon as a statement of fact. All measurements and areas are approximate only (and have been prepared in accordance with the current edition of the RICS Code of Measuring Practice).