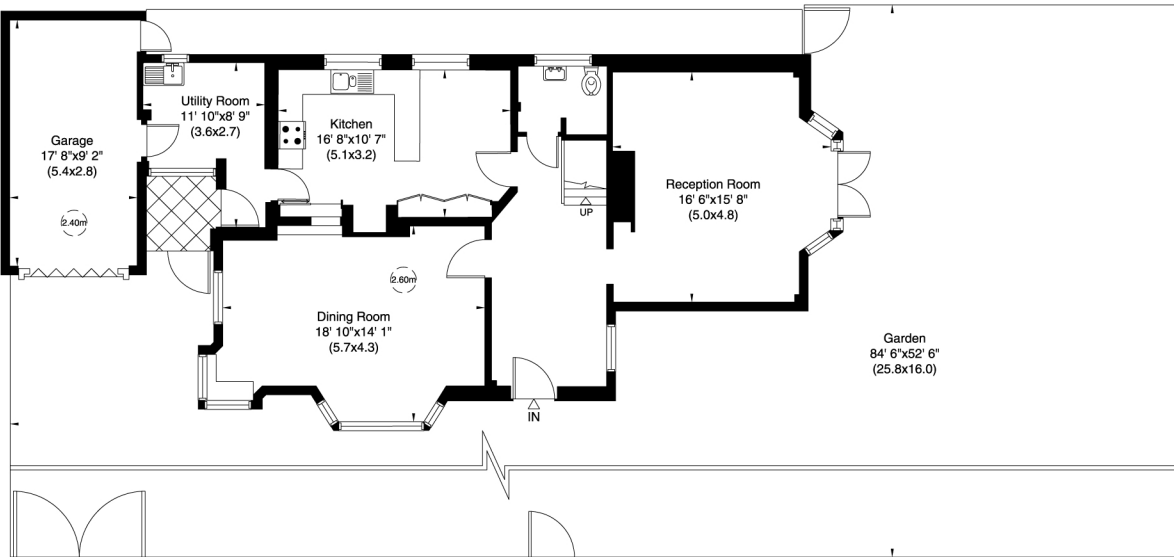
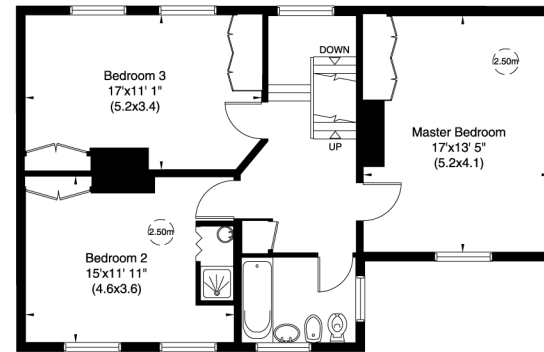


BIGWOOD ROAD
LONDON NW11

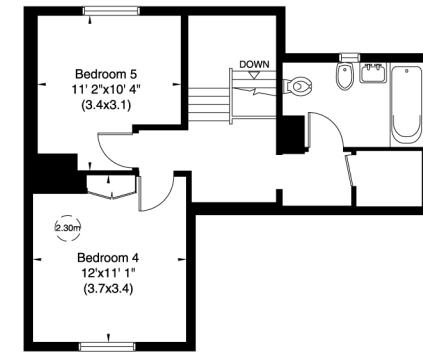
Gross internal area (approx.)
2371 Sq ft (220 Sq m) Including Garage



Ground Floor



First Floor



Second Floor

Not to scale, for guidance only and must not be relied upon as a statement of fact. All measurements and areas are approximate only (and have been prepared in accordance with the current edition of the RICS Code of Measuring Practice).