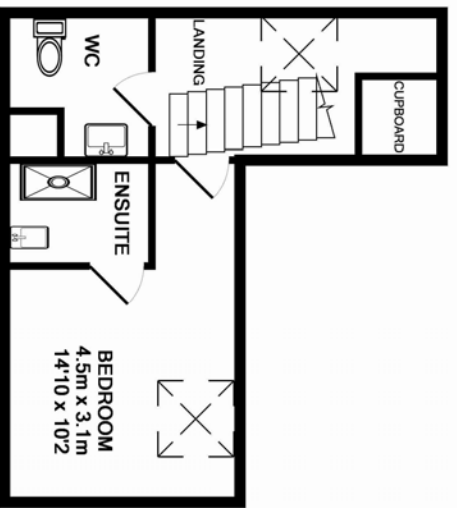
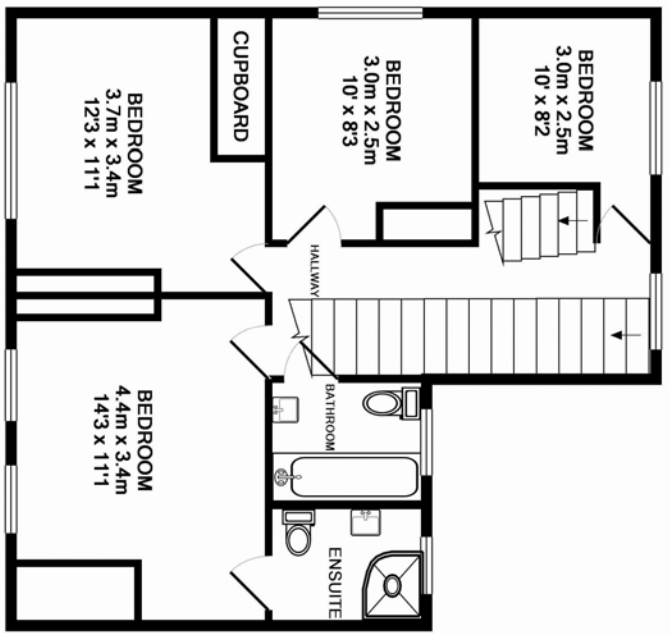


TOTAL APPROX. FLOOR AREA 161.2 SQ.M. (1735 SQ.FT.)

KeyPlan Floor Plans are produced and provided for illustrative purposes only. Whilst every effort has been made to ensure the plan is accurate and consistent, the client should verify all measurements of doors, windows and rooms are approximately said to responsibility is taken for any error, omission or mis-statement. Tel: 0344 477 4155 Email: info@keyplan.co.uk Website: www.keyplan.co.uk Made with Makroplan ©2009



TOTAL APPROX. FLOOR AREA 161.2 SQ.M. (1735 SQ.FT.)