

oñe

one

Winnington Close, london n2

“1 Winnington Close redefines true luxury. Not only does it look beautiful, filled with every fabric and texture that is truly spectacular, it really feels like home.”

4

Kelly Hoppen



Fabulous fabrics, tactile textures, home spa with 11 metre swimming pool, sauna, Hammam style steam room, and your very own cinema: number 1, Winnington Close is no ordinary family home.

Created in partnership with world-renowned interior designer Kelly Hoppen, this spacious home is a sensation. Cool, clean and distinctive in style, open the door to a new style of living.

5

**one** Winnington Close



6



7

One step in and you'll be amazed. It's not just the glamorous style of the ebony-stained oak floor, Bagatelle nickel door handles and Megaron Dressoir Console in white. Cascading from the very top of the building is a stunning crystal chandelier. The circular shape and intricate beading is exquisite.

The dining room centrepiece is the Se Break in the Clouds dining table from Paul Glover. The unusual silver finish to the accompanying Asiatides chairs, the grand white chandeliers and large Sea Mirror from India Mahdavi creates a lavish and luxurious scene. Handmade timber design folding doors open into the living room.

This treasure trove of design delights is practical as it is beautiful. There's a custom-designed fireplace from B&D Design and above, within a striking black mirror screen, is the HD-ready 46 inch TV. The Monpas side tables and impressive Paul Glover circular-tiered coffee table with chrome inlaid bowl contrast perfectly with the soft fabrics of the two large sofas and Assago custom-coloured carpet.

Beyond the concertina-folding screen from Century Furniture and before the bespoke swing doors to the family room, is a twinkling row of beautiful Conci Luce Etoile suspension lights in transparent glass.

**one** Winnington Close ground floor

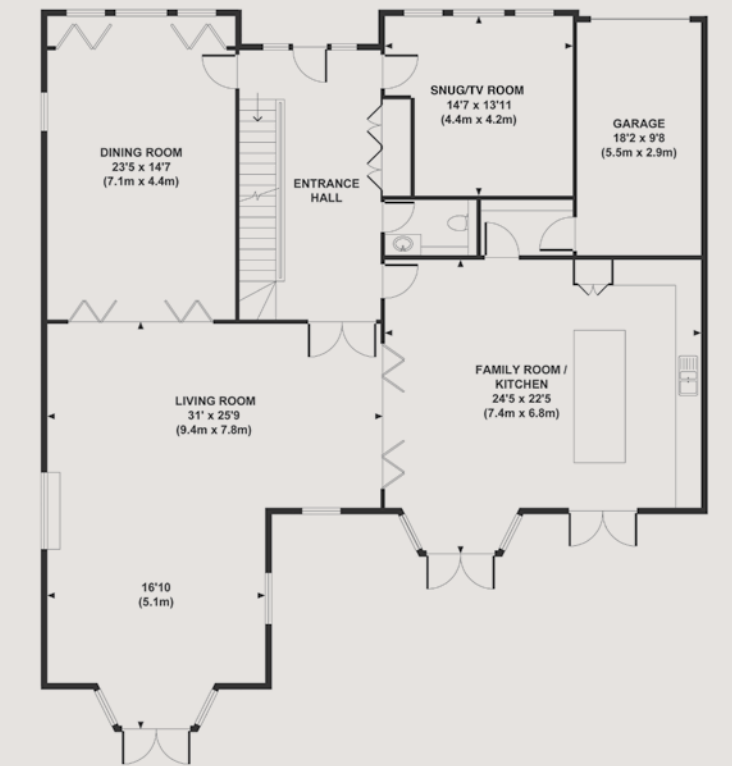


8



The heart of the family home. In the kitchen is a spectacular Kevin Reilly Altar hanging light with candles. It mirrors the clean line of the Home St Paul table and acrylic Andrew Martin chairs. The custom-made SieMatic kitchen includes SubZero double fridge/freezer and Miele coffee maker and ovens. An ingenious Gutmann retracting extractor hood is a clever detail.

Stylish yet cosy, the snug/TV room has a gorgeous Design Net sofa and opulent carpet from Borderline. Like giant tree trunks, the Bout de Canape Ullat side tables from Bleu Nature are a grand statement.



9

**one** Winnington Close ground floor

The house has a traditional English country garden designed by Laara Copley-Smith. There's a Yorkstone patio with water features either side leading to the lawn. With exclusive irrigation system, planted borders, emotive lighting plus Piet Boon furniture, this refined garden delights with its simplicity and elegance.

10



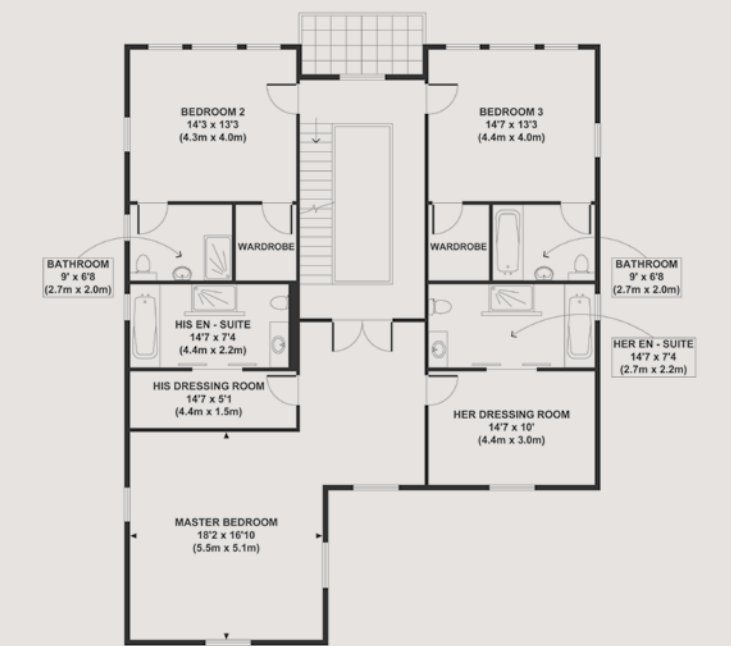
11



The calming neutral colour scheme of the house continues into the master bedroom.

Overlooking the garden, each furniture piece in this light-filled room is divine. From the kingsize Platform bed and matching bedside tables to the Credenza Console and Christopher Guy stools with silver wooden legs, there's no compromise in style. Underfoot is the luxurious and beautiful handmade carpet in Banana silk by Rimo.

The lighting is particularly striking and includes Vaughan rock table lamps with Carlisle ivory linen shades and on the walls, Kelly Hoppen IPE Cavalli Amanda lights finished in crystal.



**one** Winnington Close master bedroom

His dressing room incorporates handcrafted wardrobes with timber design sliding doors and La Fibule lounge mirror finished in matching dark wood.

The polished Staurietto marble from Carrera Tuscany in his bathroom gives a glamorous feel, accentuated with features such as the Big Rain showerhead in chrome and bespoke, handmade cabinets in oak-stained ebony. With a TV at the end of the Antonio Lupi Biblio bath, this is an ideal spot to recline and unwind.

Enjoy the view over the garden from her dressing room. Here you'll also find the Morris Console and La Fibule Dorian stool upholstered in the gorgeous De Le Cuona silk velvet. With bespoke wardrobes in ebony, there's plenty of space for clothes, accessories and shoes.

Her bathroom is a blissful retreat. The organic shell-like shape of the Rifra bath – with TV at the end plus spout extending from the floor – is mirrored in the curve of the ceramilux Antonio Lupi washbasin. Oak-stained floating shelves plus handmade cabinets and wall-mounted taps complete the feeling of magnificence.







16



17

The paler colours of bedroom 2 are contrasted with darker tones and golden hues to create a feeling of elegance. There are luxurious fabrics: the Kelly Hoppen carpet in perfect taupe and the curtains in Windsor Castle Antique Gold complement the Orrizonti-EDC bed and Mis en Demeure bedside tables.

The ensuite bathroom is sleek and sophisticated. Encased with polished Thassos stone, the frameless glass shower from Waterfront, Rifra's Cristalplant sink and the coral decoration collectively exude harmony and calm.

Bedroom 3 is a delight. There's some gorgeous pieces: the Acra horn table lamps rest elegantly on petrified wood bedside tables and, from Kelly's collection, the Peacock mirror finished in gilded wood. Functionality has not been neglected. There's a kingsize bed from Century Furniture and wall-mounted TV plus a handcrafted walk-in wardrobe with wooden handles.

Bathroom 3 is beautifully designed to incorporate a glass shower screen and Duravit bath. The mirror-mounted Rifra basin spout and Hudson Reed heated towel rail in chrome complete the look.



Let your feet sink into the sumptuous silk carpet in bedroom 4. The Lit à baldaquin Eden couchage is inviting too with its Bassorilevi Bianco fabric bedcover and handmade silk cushions. The Grenville tripod table lamps with white shades are from Andrew Martin and add an extra touch of glamour.

The accompanying bathroom gleams and glistens with Pietra Laro beige stone, Duravit Daro bath and Kelly Hoppen/Waterfront brassware.

Bedroom 5 is gorgeous. It's not just the Daisy PM bed from Luz Interiors or the Da Gama Campaign chrome and leather bedside tables. There's additional style to be found with pieces such as the Meridiani West chair upholstered in Abbott and Boyd's fabric Lins ineffables and the matching writing desk.

The ensuite is clad in creamy white porcelain stone and features a Duravit wall-mounted WC and Daro bath.

A relaxing sanctuary from the outside world.

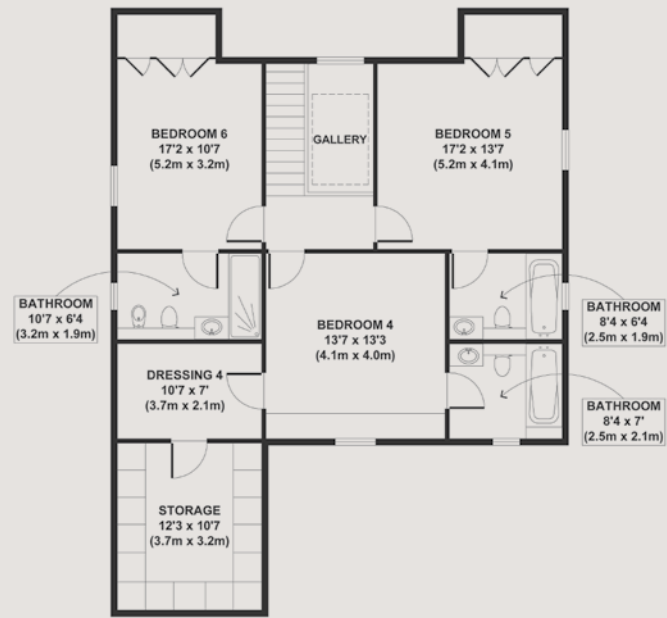
Bedroom 6 is an exciting blend of colour and texture. Here you'll find Dipoli bedside tables plus the tactile Douglas desk finished in black leather and chrome, both from Andrew Martin. Either side of Lux Interiors's Daisy GM bed is the lovely Porta Romana lamps in charcoal with oval putty-silk shades.

The ensuite showcases Kelly's designer details such as taps, showerhead and handshower.

The Armen Blanco Nebbia stone radiates a wonderful hue: an oasis of tranquillity.

Structural glazing in the roof allows natural light to flood in illuminating the stairwell and hallways.

The glittering, handmade Swarovski chandelier drops down from the roof through the entire length of the lightwell. Breathtaking.



one **Winnington Close** second floor





22

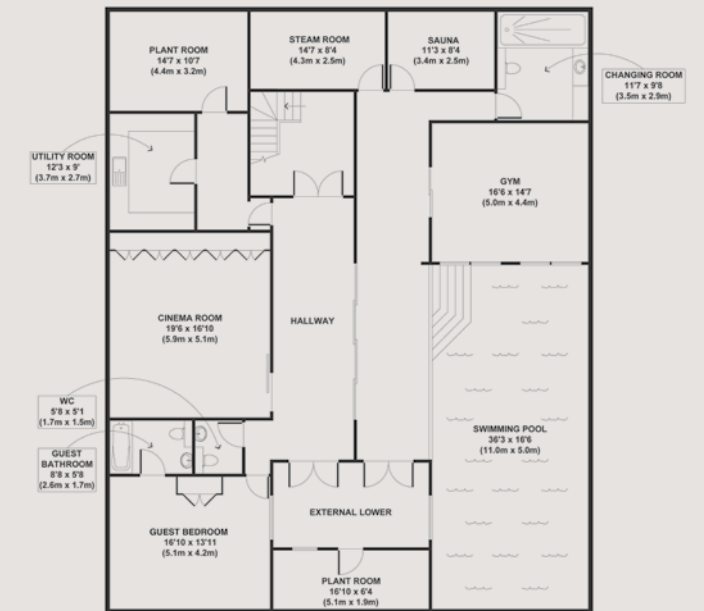


Welcome to paradise. Glide across your very own pool, which shimmers with a mosaic design from Casa Dolce Casa. The Tindle Too wall lights in white alabaster emit a relaxing glow.

If you fancy more of a workout, no problem. There's a gym equipped with cross-trainer, running machine and more. In keeping with the overall style of the house, there's Polidori & Barbera specialist finish plaster on two walls and Versailles mirror in maple from JNL.

Every detail has been considered. There's a changing room with giant Big Rain showerhead in chrome, steam room with a gorgeous coloured honed stone plus a sauna.

Now you can pamper yourself every day.



23

one **Winnington Close** lower ground floor

Quiet please, the movie is about to begin! With padded wall panels in bison Bruneel Dralaine fabric and Meridiani Belmondo armchairs in Rebelle the cinema oozes comfort and luxury. There's the technical aspects too such as the drop down projector and electronic sliding door. The Andrew Martin alphabet side tables in chrome are practical as well as fun and with bar and fridge, you need never miss a moment of your favourite film.

This floor also boasts a guest room and bathroom.

With ECD Orizzonti Sardegna bed, stunning Andrew Martin Howard side tables and Fauteuil Lupo chair, your guests will feel right at home.

The ensuite bathroom's wall lights are in gold ceramic and set off the polished Asta stone beautifully. The Rifra FLY Pietraluce sink and

Duravit Daro bath are completed with Kelly Hoppen designed taps and rain shower.



“Exquisite detailing can be found  
in every room.

Pure splendour, elegance and luxury.”

Kelly Hoppen

Throughout the house, high quality technology integrates seamlessly with modern family living. Under-floor heating provides cosy comfort and for warmer days there is air-conditioning.

The house is wired for sound, audio-visual entertainment and internet access at the highest specification. The command and control centre allows room by room programmable control.

The Lutron lighting system allows you to personalise lighting ambiance for each individual room. Match mood and occasion...  
at the touch of a button.

Stay safe with the sophisticated security system:  
24/7 360-degree house surveillance, BPT entry system  
and a panic button.

Set in a quiet close, the property has a garage and front  
forecourt parking. Your luxury home comprises  
8,430 square feet of living space.

Developed by

**regalhomes**

[www.regal-homes.co.uk](http://www.regal-homes.co.uk)

Designed by



**KELLY HOPPEN**



