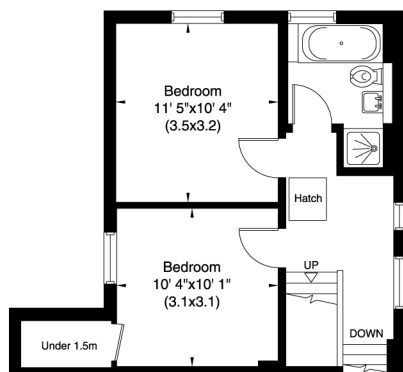
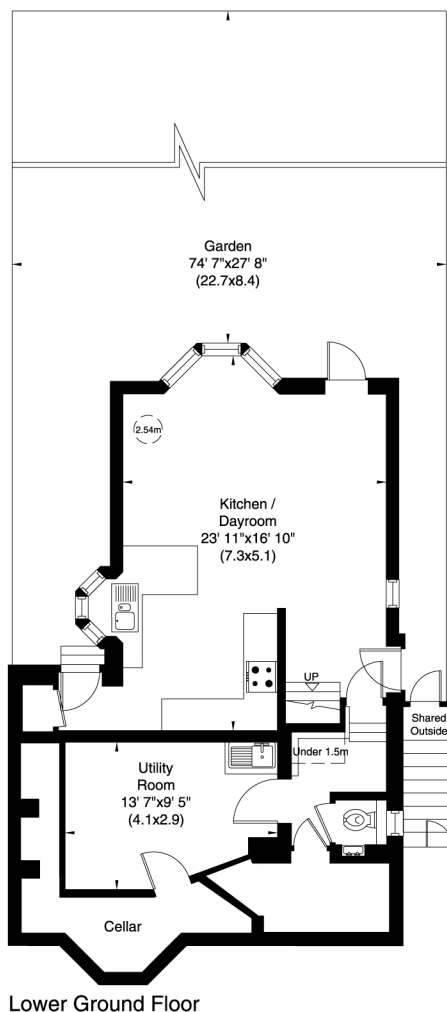
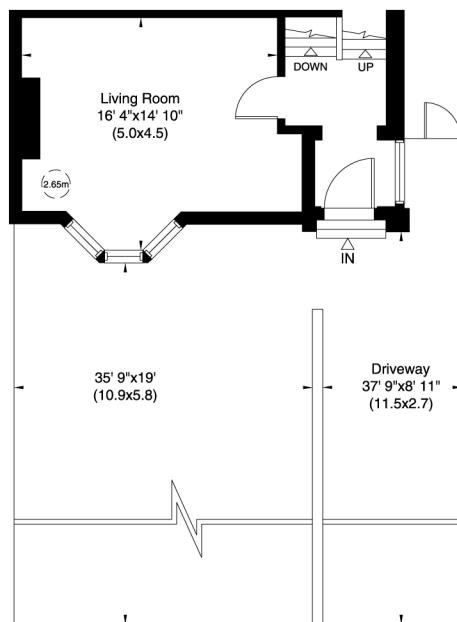


**ROTHERWICK ROAD  
LONDON NW11**

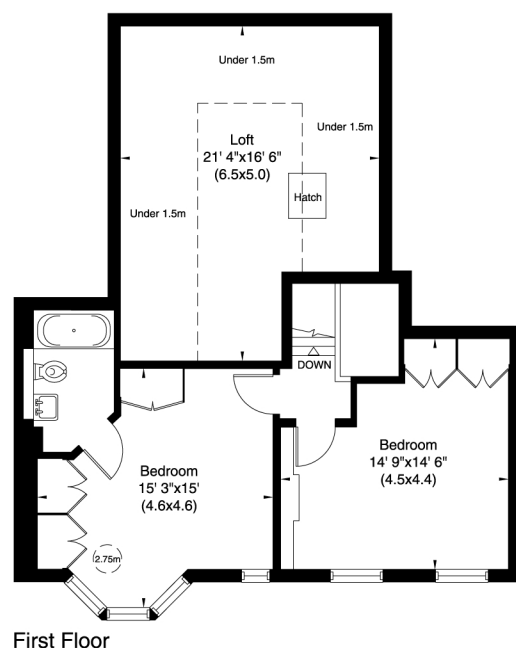
Gross Internal Area: 186 Sq. metres  
2001 Sq. feet



Upper Raised Ground Floor



Upper Ground Floor



First Floor

Not to scale, for guidance only and must not be relied upon as a statement of fact. All measurements and areas are approximate only (and have been prepared in accordance with the current edition of the RICS Code of Measuring Practice).