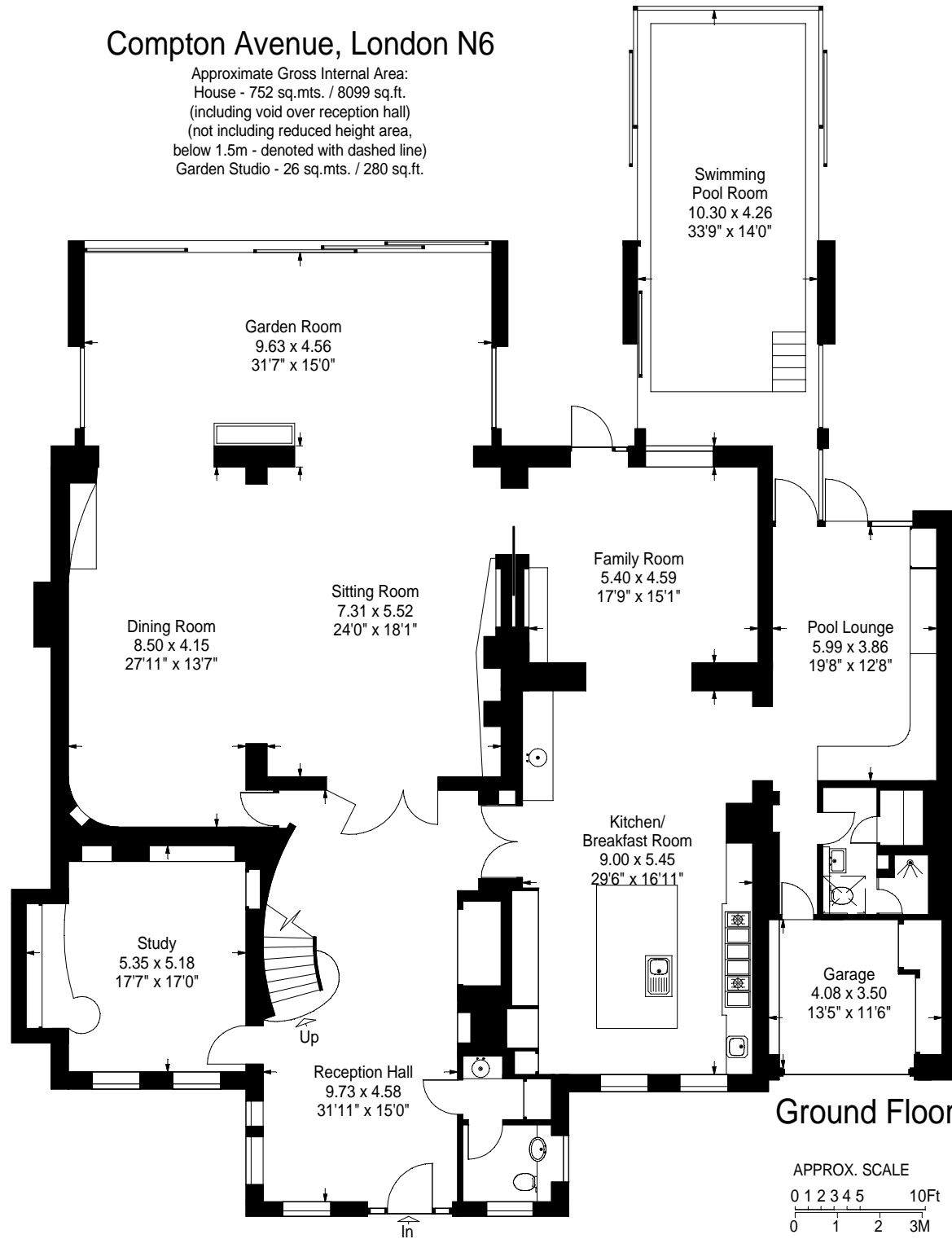
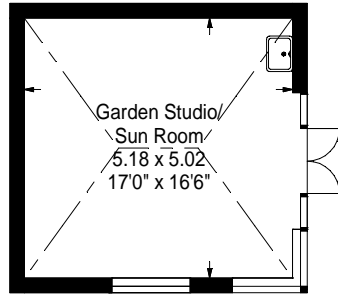
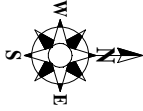
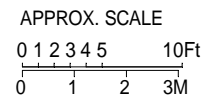


# Compton Avenue, London N6

Approximate Gross Internal Area:  
 House - 752 sq.mts. / 8099 sq.ft.  
 (including void over reception hall)  
 (not including reduced height area,  
 below 1.5m - denoted with dashed line)  
 Garden Studio - 26 sq.mts. / 280 sq.ft.



Ground Floor



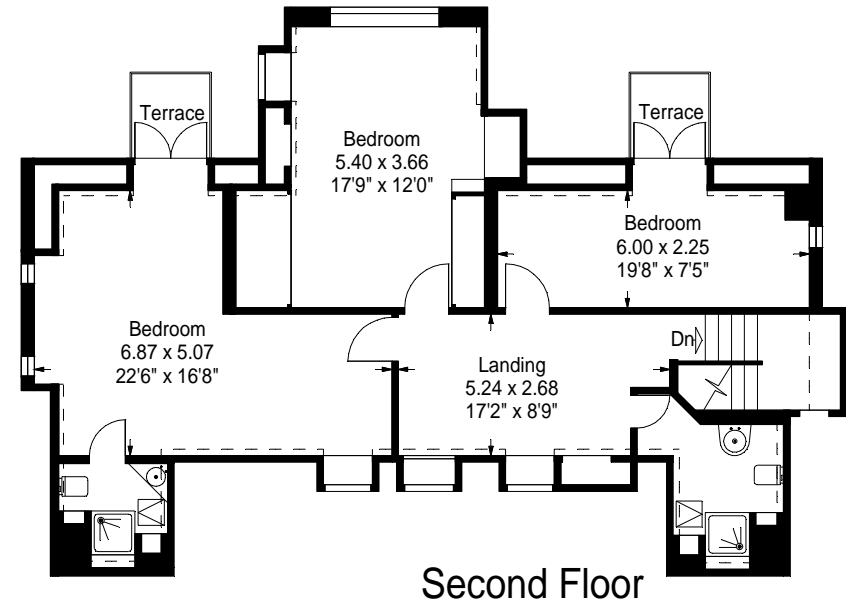
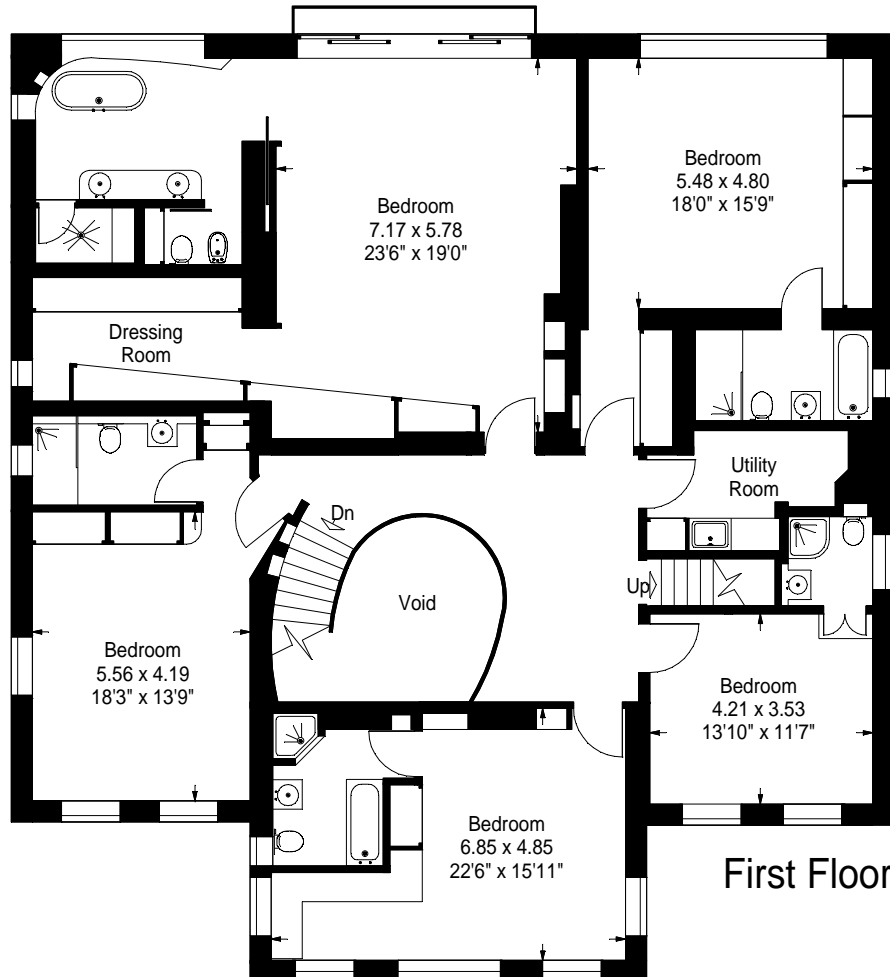
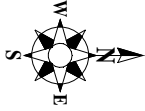
Floor Plans produced by

**Proplan**

01491 842925

All measurements and figures are taken  
 in accordance with RICS guidelines.  
 This plan is for guidance only and must  
 not be relied upon as a statement of fact.

# Compton Avenue, London N6



Floor Plans produced by

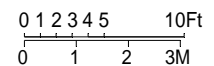
**Proplan**

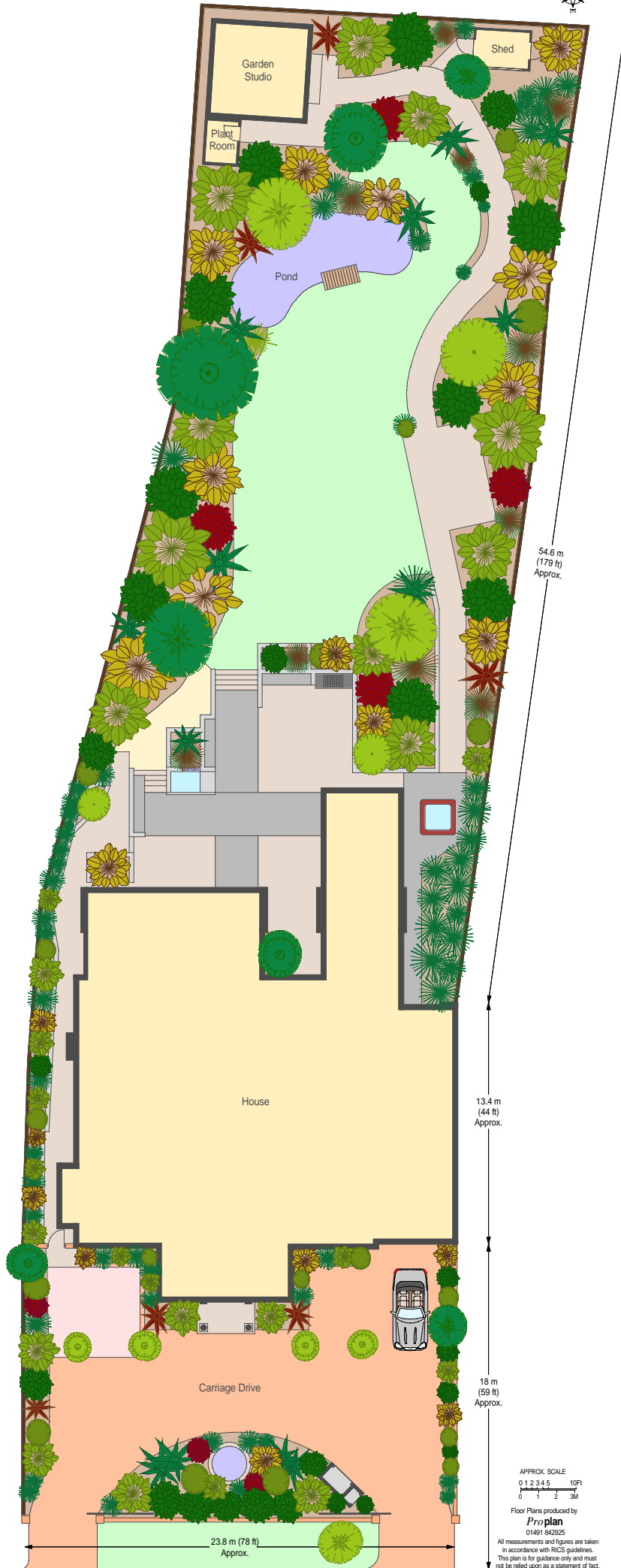
01491 842925

All measurements and figures are taken  
in accordance with RICS guidelines.

This plan is for guidance only and must  
not be relied upon as a statement of fact.

APPROX. SCALE





54.6 m  
(179 ft)  
Approx.

13.4 m  
(44 ft)  
Approx.

18 m  
(59 ft)  
Approx.

Carriage Drive

23.8 m (78 ft)  
Approx.

APPROX. SCALE  
0 1 2 3 4 5 10ft  
0 1 2 3M

Floor Plans produced by  
**Proplan**  
01481 842925

All measurements and figures are taken  
in accordance with RICS guidelines.  
This plan is for guidance only and must  
not be relied upon as a statement of fact.