

Life is sweet! Super-mansion built for Tate & Lyle sugar magnate goes on sale for a staggering £100m (even the brochure is £2,000)

- Heath Hall in The Bishops Avenue, Hampstead, London, becomes the most expensive UK home on open market
- Built for William Park Lyle in 1910, but fell into disrepair in the 1950s under the ownership of the Bank of China
- Was bought in 2006 by a property tycoon who has spent £40m transforming it into one of country's finest homes
- Comes with 14 bedrooms, six reception rooms, home cinema, sauna, wine cellar, snooker room and panic room
- Twelve types of Italian marble and seven types of wood used for the bathrooms while other rooms are clad in oak
- All of the carpentry and hand-carved marble basins were prepared in Italy before being transported to London
- Stamp duty alone will cost the buyer £7 million... enough to buy you a magnificent country home in the Cotswolds

By [Daily Mail Reporter](#)

PUBLISHED: 18:36, 24 August 2012 | **UPDATED:** 14:21, 25 August 2012

A breathtaking mansion built for a sugar magnate has become the most expensive house for sale in Britain at £100million - and even the estate agents' brochure will set you back £2,000.

Heath Hall was constructed on London's most exclusive street - The Bishops Avenue in Hampstead - in 1910 for William Park Lyle of the Tate & Lyle family.

It fell into disrepair until property magnate Andreas Panayiotou bought it in 2006 and transformed it into one of the capital's finest properties.



How much? This stunning mansion on a Hampstead street known as billionaires' row has gone on sale for £100million, making it the most expensive home on the market



© Glentree / SWNS.com

Palatial: The property was built for sugar magnate William Park Lyle in 1910, but fell into disrepair in the 1950s while under the ownership of the Bank of China

He spent £40million renovating the mansion and it is now the most expensive house on the open market in the UK.

The stamp duty alone will cost the buyer £7million - enough to buy a magnificent country home in the Cotswolds.

It is so exclusive that potential buyers will have to undergo a vetting process by agents Glentree Estates before paying £2,000 for the glossy brochure.



© Glentree / SWNS.com

Eat your heart out: The magnificent three-story house was brought back to its glorious best thanks to a £40million renovation by property tycoon Andreas Panayiotou



© Glentree / SWNS.com

Music to the owner's ears: Mr Panayiotou employed a team of 120 tradesmen for the renovation, adding a further 8,000sq/ft to the already substantial 19,000sq/ft



High-class finish: Twelve types of Italian marble and seven types of wood, all prepared in Italy, were used for the bathrooms, according to the estate agents



© Gientree / SWNS.com

Fantastic features: The mansion now boasts 14 bedroom suites, six reception rooms, a drawing room, dining room, family room, sun room and snooker room

The property fell into disrepair after the Bank of China took over the three-storey mansion in the 1950s.

Bishops Avenue is now known as Billionaires' Row because of the incredible wealth of the residents which include the Saudi Royal Family.

And the person who buys Heath Hall will get bragging rights as one of only a few people in London with a nine-figure valued home.

Mr Panayiotou employed a team of 120 tradesmen for the renovation, adding a further 8,000sq/ft to the already substantial 19,000sq/ft.



© Glentree / SWNS.com

Entertainment hub: There is also a library, home cinema, steam room with sauna, fully fitted home gym and wine cellar with climate-controlled temperature



© Glentree / SWNS.com

Host with the most: The person who buys Heath Hall will get bragging rights as one of only a few people in London with a nine-figure valued home



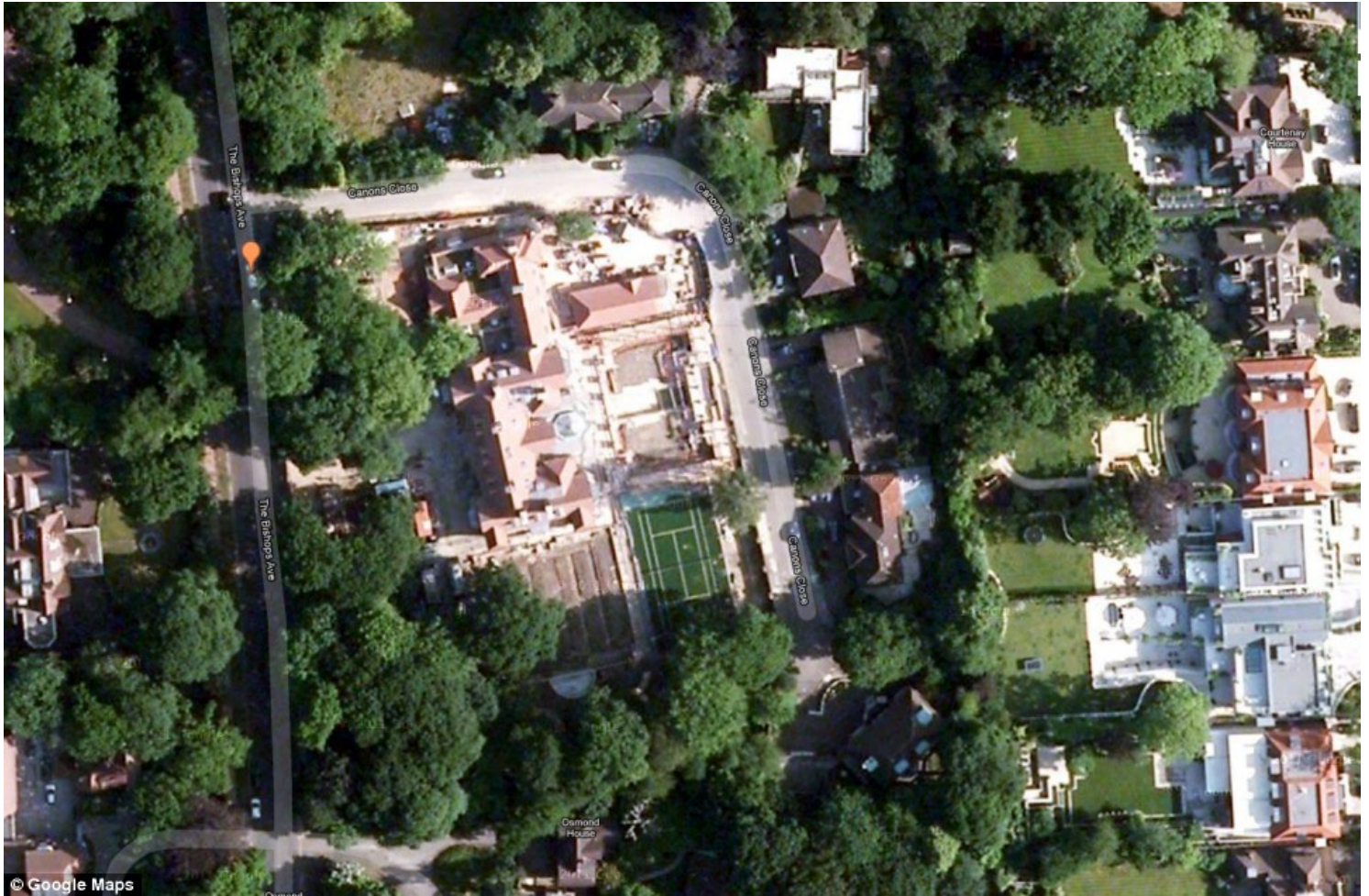
Tranquil: The home, set in 2.5 acres of manicured gardens, is one of the largest private properties in the capital, but comes with a stamp duty fee of £7million

He was ranked 200th in last year's UK Rich List after building up a £400million property empire, a remarkable achievement given that he suffers from dyslexia.

He learned to memorise words, but never did learn to read in the conventional sense, leaving school at 14 without a single O-level.

But despite his lack of qualifications, he went on to achieve stunning business success.

The son of Greek-Cypriot immigrants, Mr Panayiotou was raised in London's East End.



Prime real estate: An aerial view of Heath Hall (centre of picture), which is located on The Bishops Avenue, Hampstead, the home to many wealthy residents including the Saudi Royal Family



Labour of love... and money: Heath Hall was bought by property tycoon Andreas Panayiotou (pictured) in 2006 after falling into disrepair and he has spent £40million bringing it back to its glorious best

As a young man working for his father, he bought a small property in Islington, converted it into flats, and started what would become one of the biggest

buy-to-let empires in Britain.

In 2007 he sold thousands of flats, focusing instead on building a portfolio of hotels.

Mr Panayiotou lives on a 20-acre estate in Epping Forest and owns £40million Gulfstream G450 jet, a £12million Mangusta 130 yacht, and two Cessna Citation jets.

The home, set in 2.5-acres of manicured gardens, now boasts 14 bedroom suites, six reception rooms, a drawing room, dining room, family room, sun room and snooker room.

There is also a library, home cinema, steam room with sauna, fully fitted home gym and wine cellar with climate controlled temperature.

Twelve types of Italian marble and seven types of wood were used for the bathrooms while the snooker room, office, bar, library and grand staircase are all clad in Oak.

All of the carpentry and hand-carved marble basins were prepared in Italy before being transported to the property.

And for the security-conscious billionaire likely to buy the property, Heath Hall has been fitted with a panic room.

This vault-like room has its own toilet, basin, control panel and separate telephone wires, which cannot be cut.

The job of selling the mansion belongs to Glentree Estates and its managing director, Trevor Abrahmsohn.

Mr Abrahmsohn has sold 95 per cent of the homes on Bishops Avenue over the past 35-years and regards Heath Hall as one of the road's finest properties.

He said: 'Heath Hall is one of the largest private homes in the whole of London. It is like a country home in the city, there are private golf courses nearby and the West End it just 15-minutes away.

'It was the super-mansion of its day and the restoration has been carried out lovingly.

'Bishops Avenue is like Beverly Hills, it is one of the world's best addresses. And Heath Hall is one of the finest houses on the road.'

MOST READ NEWS

- [Previous](#)
- [1](#)
- [2](#)
- [Next](#)



[We're going commando... Facebook group strips in support of...](#)



[Sex-crazed Angelina Jolie lookalike 'stabs taxi driver for...](#)



[Is Teddy the giant tom cat REALLY the mystery lion of Essex?...](#)



[Here, kitty kitty: Image of 'Essex Lion' that sparked...](#)



[Family food bills to soar: British shoppers face paying more...](#)



[Chris Evans angers neighbours as vintage rally drives into...](#)



[Middle-class benefit cheat wife claimed to be single mum...](#)



[That's not very PC! Once upon a time, Notting Hill Carnival...](#)



[British nurse who returned from Australia to work in NHS is...](#)



[The right to bare breasts: Women across the country take off...](#)



[Well, they do call it close protection: Prince Harry...](#)



[Famous anorexic identical twins die in house fire following...](#)

Comments (646)

- [Newest](#)
- [Oldest](#)
- [Best rated](#)
- [Worst rated](#)

[View all](#)

Is not being "vetted" for wanting to part with 100 million for a house violating discrimination laws

- eltorro, manilla philippines, 26/8/2012 00:49

Click to rate __ Rating 1

[Report abuse](#)

I would love to see a follow up article on this.as to who bought it....sure its a beautiful housebut its not a "home"....just like a 10 star hotel .

- eltorro, manilla philippines, 26/8/2012 00:42

Click to rate __ Rating 2

[Report abuse](#)

.....too clinical - one would think hospital on opening ones eyes imagine it after having a night out - the dining room who would sit at a table where there is no place to put ones feet / legs - one wrong move - the lot would be on the floor !! I wouldn't like to be the washer woman all the white.....

- Jules, upnorth, 25/8/2012 23:20

Click to rate Rating 2

[Report abuse](#)

but is there a spar near by?

- Grimm Up North Mother, Chorley In Lancashire , 25/8/2012 23:10

Click to rate Rating 2

[Report abuse](#)

SWEEEEEEEEET!!!!!!!

- swampy, the Cotswolds, 25/8/2012 21:08

Click to rate Rating 1

[Report abuse](#)

Looks too much like a very impersonal hotel. Certainly not worth the asking price and could only possibly be bought by a Foreigner !!

- Maureen, Blyth England, 25/8/2012 20:49

Click to rate Rating 4

[Report abuse](#)

Andreas Panayiotou can be my Mr Grey anytime.....haha!

- Losing faith, UK, 25/8/2012 18:09

Click to rate Rating 22

[Report abuse](#)

I don't care where it is, or how much has (allegedly) been spent on the renovation, it's not worth £100m.

- Fiona, London, 25/8/2012 17:59

Click to rate Rating 34

[Report abuse](#)

Its a bit overlooked

- Catherine, Grimsby, 25/8/2012 17:49

Click to rate Rating 29

[Report abuse](#)

The bedroom looks like a hospital ward,i like the use of marble though. Also, the property appear's to be overlooked by other house's (council looking,) to the rear.

- Mr KD Eminson, Doncaster UK, 25/8/2012 17:45

Click to rate Rating 5

[Report abuse](#)

The views expressed in the contents above are those of our users and do not necessarily reflect the views of MailOnline.

Ads by Google:

[Tesco Finest Bathrooms](#)Bathroom Ideas & Planning Clubcard Points & Home Design Visitwww.tescofinestbathrooms.com

[Reliable Electrician](#)Established Over 10 Years. Fast Response, No Obligation Quotesin-siteplumbing.com

[Comer Serviced Offices](#)Comer Business & Innovation Centres managed offices from 100 sq ftcomerservicedoffices.co.uk

[Super Luxury Kitchens](#)Superb Luxury Kitchens Fitted by Expert Craftsmen- Contact Us Now!KitchensByMikeTaylor.co.uk/Luxury

[55/YO Mum Looks 35](#)Mum Reveals Shocking Trick for Erasing Wrinkles! Doctors Hate Herwww.MyFundamentalskin.com/AntiAging

Published by Associated Newspapers Ltd

Part of the Daily Mail, The Mail on Sunday & Metro Media Group

[© Associated Newspapers Ltd](#)

