

**WELLGARTH MANOR
APARTMENT FOUR**

BARNET, LONDON, NW11

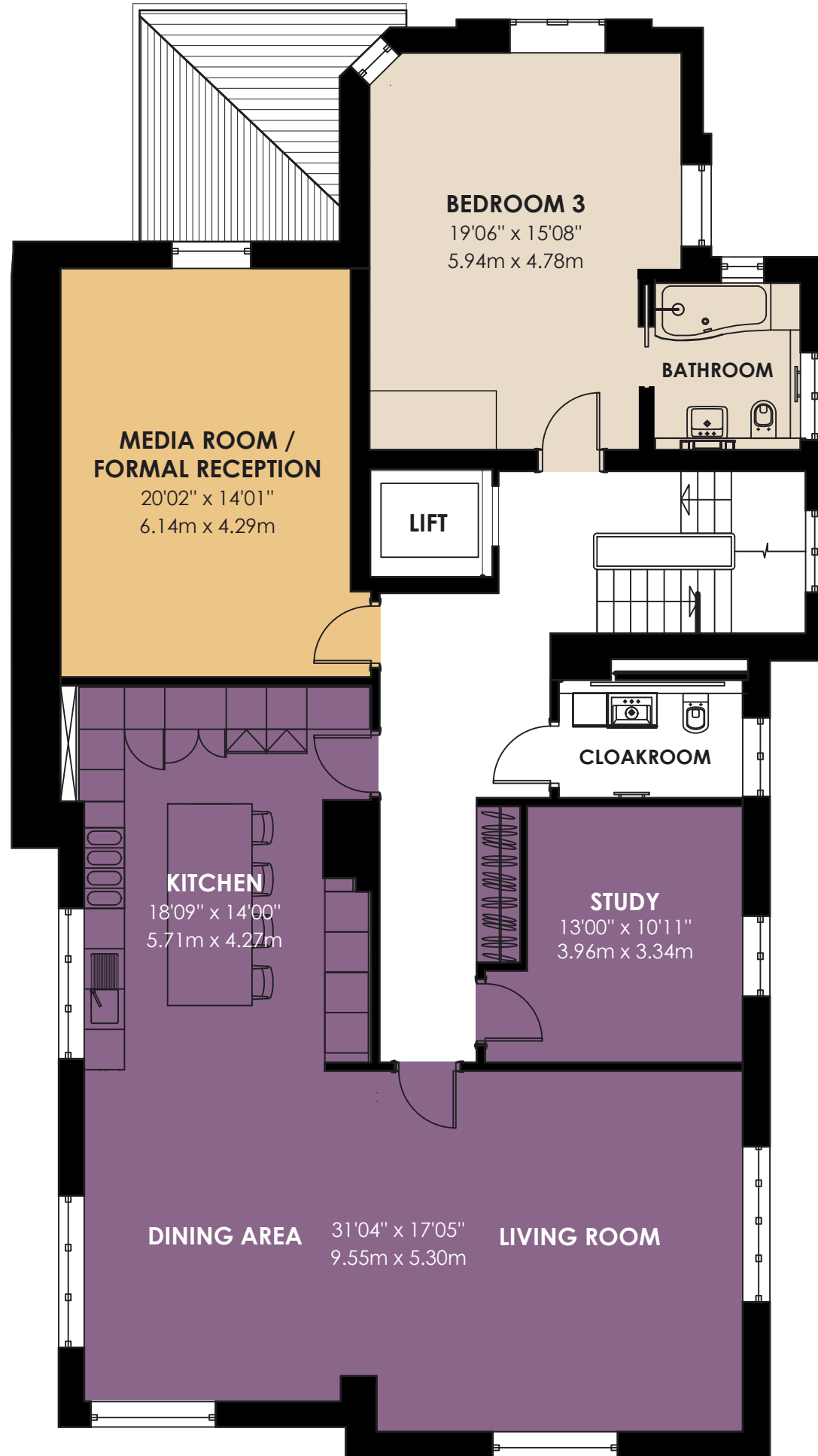
GROUND FLOOR

[APPROX. 11.8 m²/ 127 sq.ft.]

TOTAL AREA OF APARTMENT 4

[APPROX. 328 m²/ 3,530 sq.ft.]

All measurements and figures are taken in accordance with RICS guidelines. This plan is for guidance only and must not be relied upon as a statement of fact. [Not to scale]






**WELLGARTH MANOR
APARTMENT FOUR**

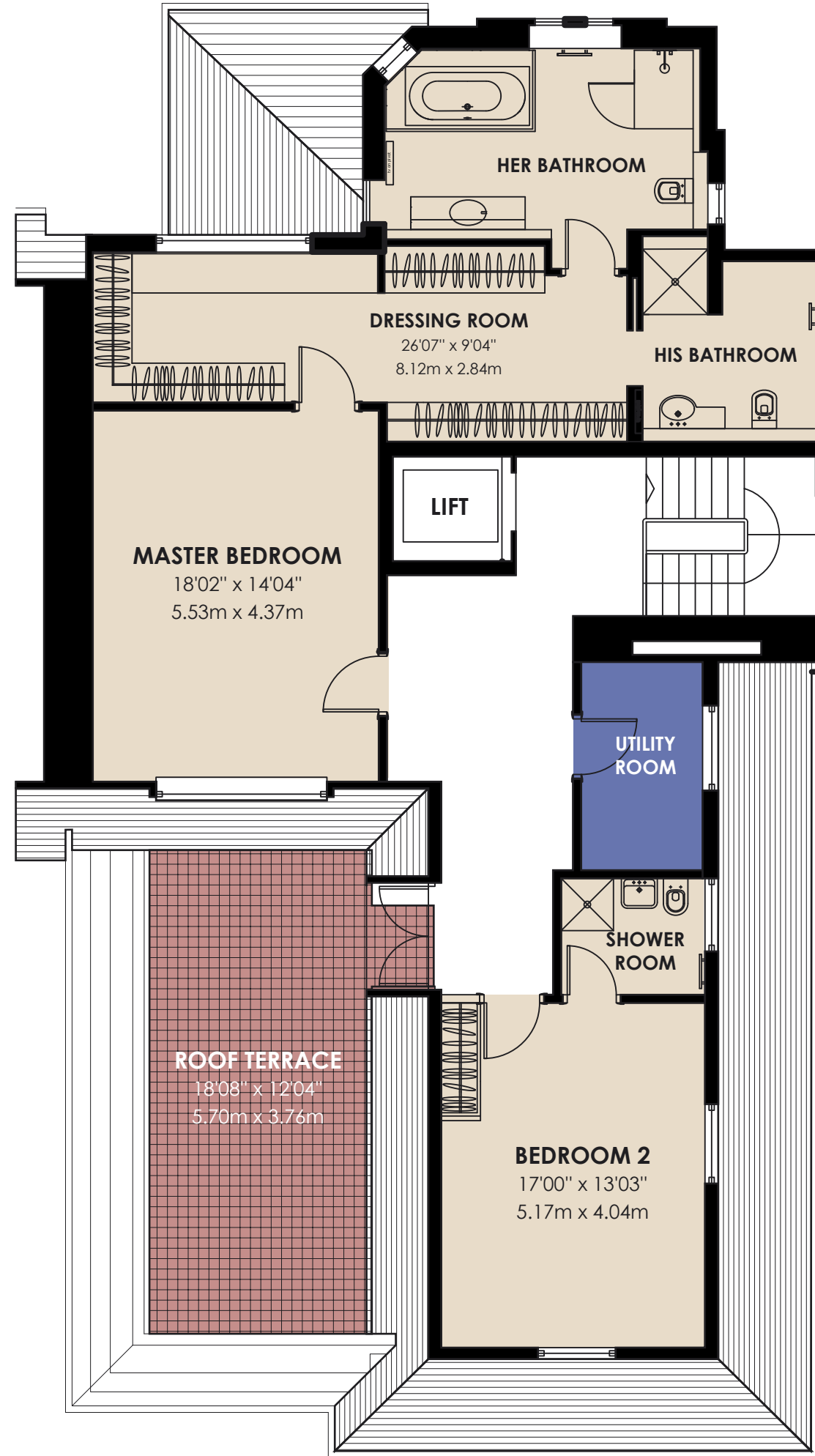
BARNET, LONDON, NW11

FIRST FLOOR

[APPROX. 191.6 m²/ 2,062 sq.ft.]

All measurements and figures are taken in accordance with RICS guidelines. This plan is for guidance only and must not be relied upon as a statement of fact. [Not to scale]

-  INFORMAL LIVING AREAS
-  SLEEPING AREAS
-  RECREATION AREAS



**WELLGARTH MANOR
APARTMENT FOUR**
BARNET, LONDON, NW11
SECOND FLOOR
[APPROX. 124.5 m²/ 1,340 sq.ft.]

All measurements and figures are taken in accordance with RICS guidelines. This plan is for guidance only and must not be relied upon as a statement of fact. [Not to scale]

-  SLEEPING AREAS
-  OUTDOOR TERRACES
-  UTILITY AREAS