

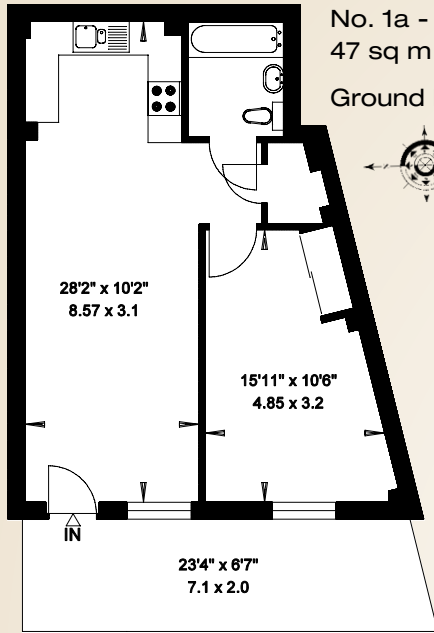
Elderberry Court

2a Alberon Gardens

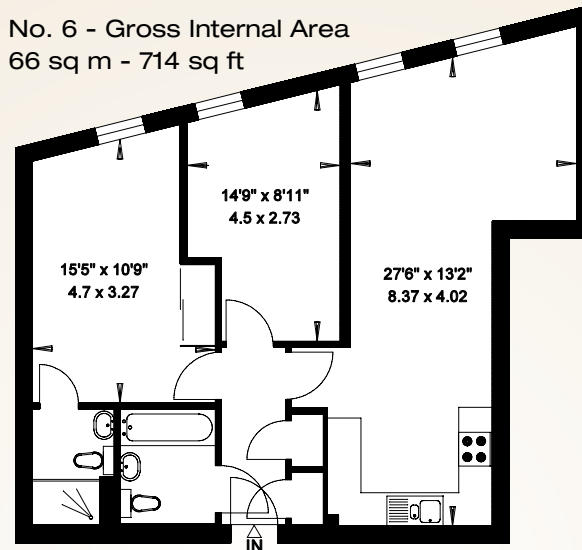
LONDON NW11



A selection of 1 and 2 bedroom apartments in a newly built block with underground parking. The flats are conveniently located for the excellent amenities Temple Fortune has on offer. All the flats are finished to a high standard and include modern fitted kitchens and bathrooms, wardrobes to master bedroom and outside space to show flat. The block is also well situated for bus routes and motorway links together with Northern Line Tube Stations a short distance away.



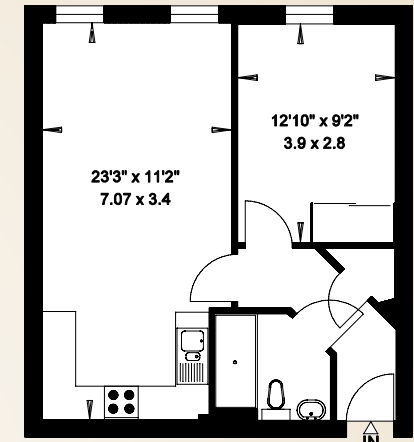
No. 1a - Gross Internal Area
47 sq m - 517 sq ft
Ground Floor



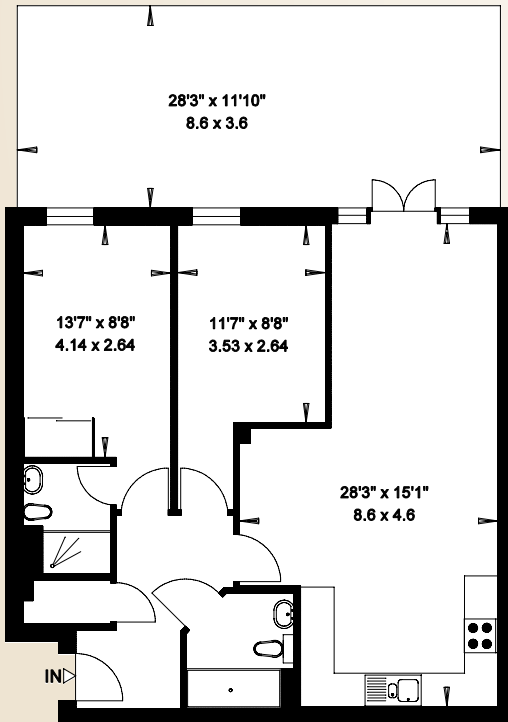
No. 6 - Gross Internal Area
66 sq m - 714 sq ft

First Floor

No. 10 - Gross Internal Area
44 sq m - 479 sq ft



Second Floor

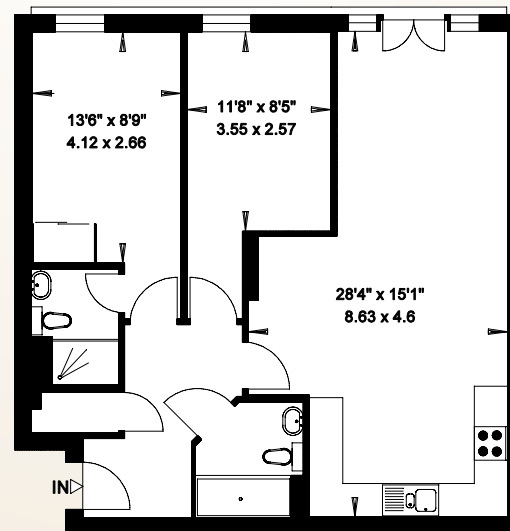


No. 2
Gross Internal Area
72 sq m - 778 sq ft

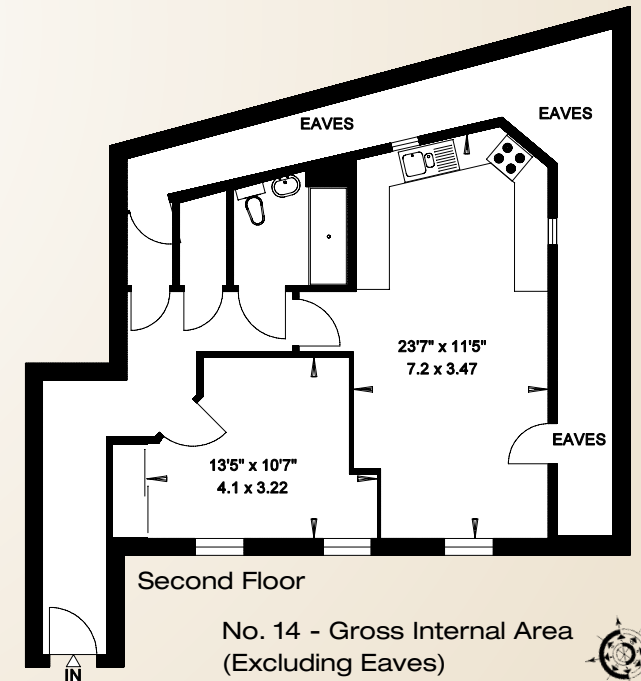


First Floor

No. 9 - Gross Internal Area
72 sq m - 778 sq ft



Second Floor



Second Floor

No. 14 - Gross Internal Area
(Excluding Eaves)
56 sq m - 609 sq ft

